

VORTAC HLN <b>117.7</b> Chan <b>124</b>	APP CRS <b>266°</b>	Rwy Idg TDZE Apt Elev <b>N/A</b> <b>N/A</b> <b>3877</b>
---	------------------------	--

# VOR-B

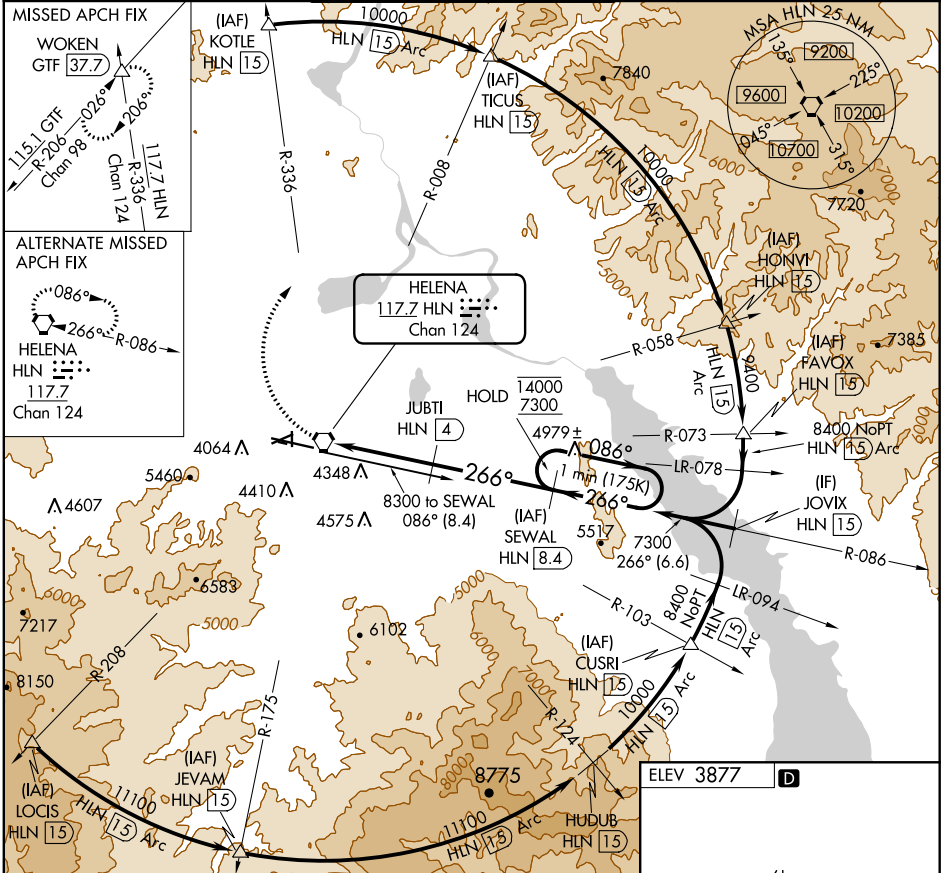
HELENA RGNL (HLN)

**DME Required.**

**⚠** Helicopter visibility reduction below 1 SM NA. DME Arc to final approach course required for turbojet aircraft. Holding at SEWAL authorized for Cat A and B aircraft only. Circling NA to **⚠** -17°C Rwys 10, 28. Circling Rwy 5, 23, 35 NA at night. Circling NA for Cat D south of Rwy 9-27.

**⚠** MISSED APPROACH: Climbing right turn to 9000 on HLN VORTAC R-336 to WOKEN INT /GTF 37.7 DME and hold.

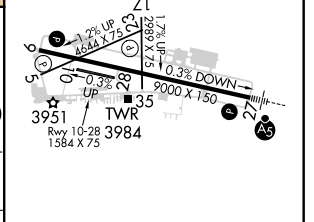
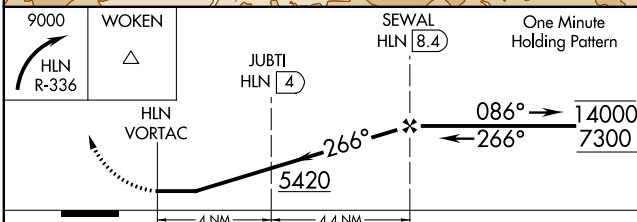
ATIS <b>120.4</b>	HELENA APP CON * <b>119.5 229.4</b>	HELENA TOWER * <b>118.3 (CTAF) 257.8</b>	GND CON <b>121.9</b>	UNICOM <b>122.95</b>
----------------------	--	---	-------------------------	-------------------------



**MISSED APCH FIX**  
WOKEN GTF 37.7  
115.1 GTF  
Chan 98  
R-336  
Chan 124  
117.7 HLN

**ALTERNATE MISSED APCH FIX**  
HELENA HLN 117.7  
Chan 124  
086°  
R-086

ELEV 3877 **D**



CATEGORY	A	B	C	D
<b>C</b> CIRCLING	4760-1¼ 883 (900-1¼)	4800-1¼ 923 (1000-1¼)	5920-3	2043 (2100-3)

REIL Rwys 9, 17 and 35 **⚠**  
MIRL Rwys 5-23 and 17-35 **⚠**  
HIRL Rwy 9-27 **⚠**

NW-1, 09 SEP 2021 to 07 OCT 2021

NW-1, 09 SEP 2021 to 07 OCT 2021