

WAAS CH <b>63026</b> <b>W25A</b>	APP CRS <b>251°</b>	Rwy Idg TDZE Apt Elev	<b>3999</b> <b>86</b> <b>86</b>
--	------------------------	-----------------------------	---------------------------------------

# RNAV (GPS) RWY 25

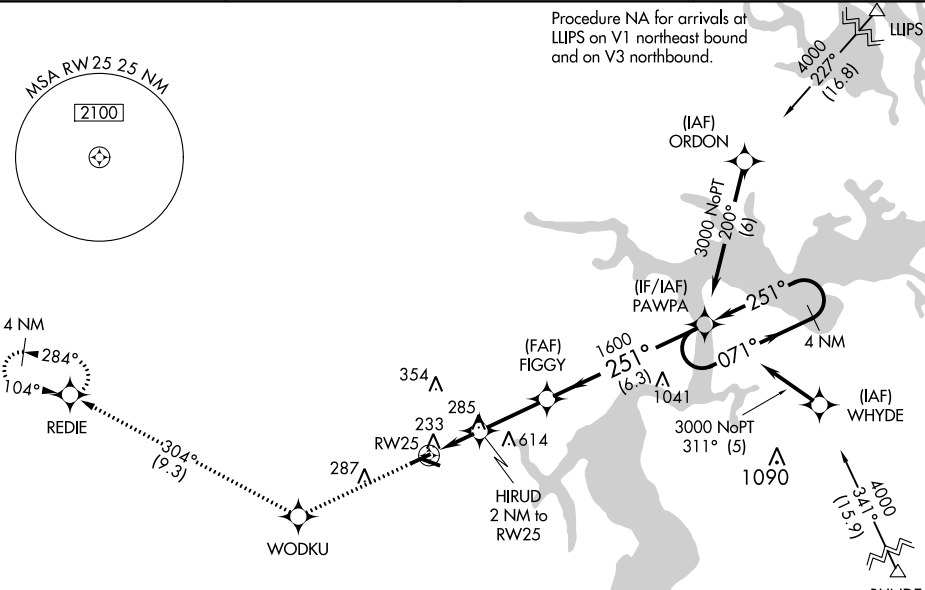
## HERLONG RECREATIONAL (HEG)

**⚠** Baro-VNAV NA when using Cecil altimeter setting. For uncompensated Baro-VNAV systems, procedure NA below -15°C (5°F) or above 54°C (130°F). DME/DME RNP-0.3 NA.  
**⚠** NA When local altimeter setting not received, use Cecil altimeter setting: increase all DA 13 feet and all MDA 20 feet; increase LNAV Cat C and D visibility 1/8 mile. Procedure NA at night for Cat C/D aircraft. Night landing: Rwy 7, 11, 29 NA. Helicopter visibility reduction below 3/4 SM NA.

**MISSED APPROACH:** Climb to 2000 direct WODKU and on track 304° to REDIE and hold.

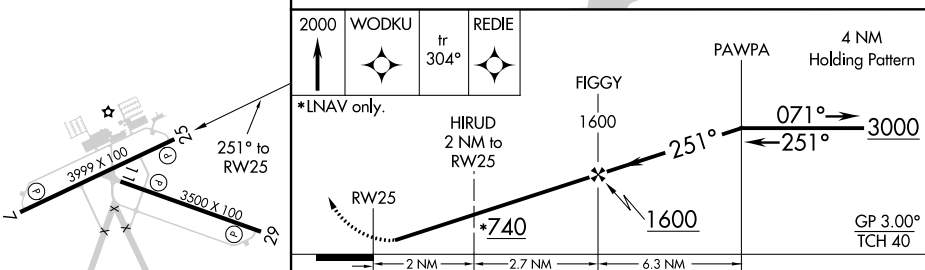
AWOS-3 <b>119.275</b>	JACKSONVILLE APP CON <b>127.775 377.075</b>	GCO <b>121.725</b>	UNICOM <b>123.0 (CTAF) 0</b>
--------------------------	--	-----------------------	---------------------------------

Procedure NA for arrivals at LLIPS on V1 northeast bound and on V3 northbound.



ELEV 86	TDZE 86
---------	---------

Procedure NA for arrivals at BUNDE on V51 southbound.



	<p>*LNAV only.</p> <p>HIRUD 2 NM to RW25</p> <p>*740</p> <p>1600</p> <p>1600</p> <p>3000</p> <p>GP 3.00° TCH 40</p>			
CATEGORY	A	B	C	D
LPV DA	378-1 292 (300-1)			
LNAV/VNAV DA	612-1 526 (600-1 1/8)			
LNAV MDA	600-1	514 (600-1)	600-1 3/8	514 (600-1 3/8)
<b>C</b> CIRCLING	600-1	514 (600-1)	980-2 3/4 894 (900-2 3/4)	980-3 894 (900-3)

SE-3, 09 SEP 2021 to 07 OCT 2021

SE-3, 09 SEP 2021 to 07 OCT 2021