

WAAS CH <b>86312</b> W03A	APP CRS <b>033°</b>	Rwy Idg TDZE Apt Elev	<b>6827</b> <b>3412</b> <b>3449</b>
---------------------------------	------------------------	-----------------------------	---

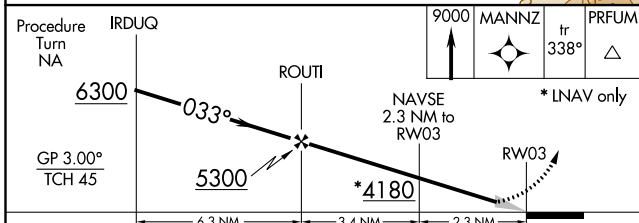
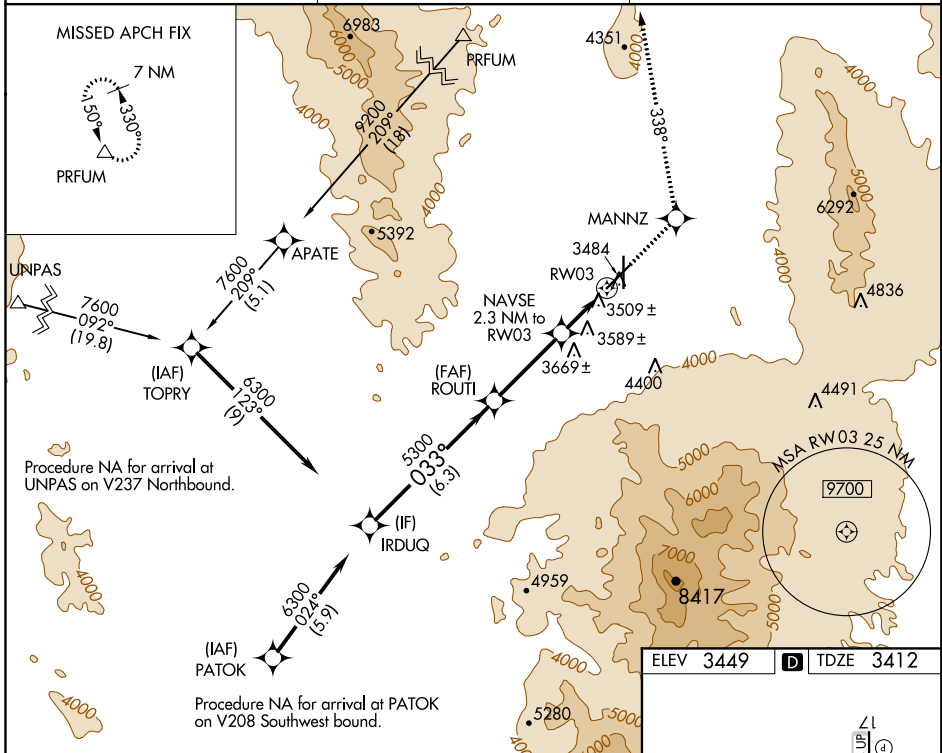
# RNAV (GPS) RWY 3

KINGMAN (IGM)

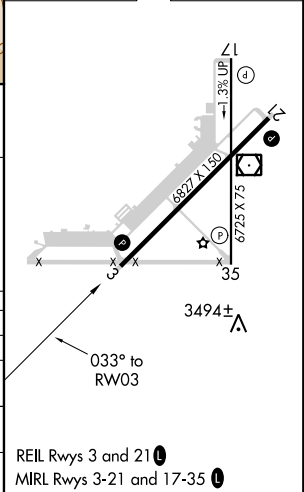
**⚠** For uncompensated Baro-VNAV systems, LNAV/VNAV NA below -21°C (-5°F) or above 42°C (107°F). DME/DME RNP-0.3 NA.  
**⚠** Circling NA for Cat D southeast of Rwy 3-21. Circling Rwy 35 NA at night.

**MISSED APPROACH:** Climb to 9000 direct MANNZ and via track 338° to PRFUM and hold, continue climb-in-hold to 9000.

ASOS <b>119.275</b>	LOS ANGELES CENTER <b>124.85 319.2</b>	UNICOM <b>122.8 (CTAF)</b> <b>0</b>
------------------------	---	--



ELEV 3449	<b>D</b> TDZE 3412
-----------	--------------------



CATEGORY	A	B	C	D
LPV DA		3713-1	301 (400-1)	
LNAV/VNAV DA		3952-2	540 (600-2)	
LNAV MDA	3840-1	428 (500-1)	3840-1½ 428 (500-1½)	3840-1½ 428 (500-1½)
CIRCLING	3980-1 531 (600-1)	4100-1 651 (700-1)	4420-3	971 (1000-3)

SW-4, 09 SEP 2021 to 07 OCT 2021

SW-4, 09 SEP 2021 to 07 OCT 2021