

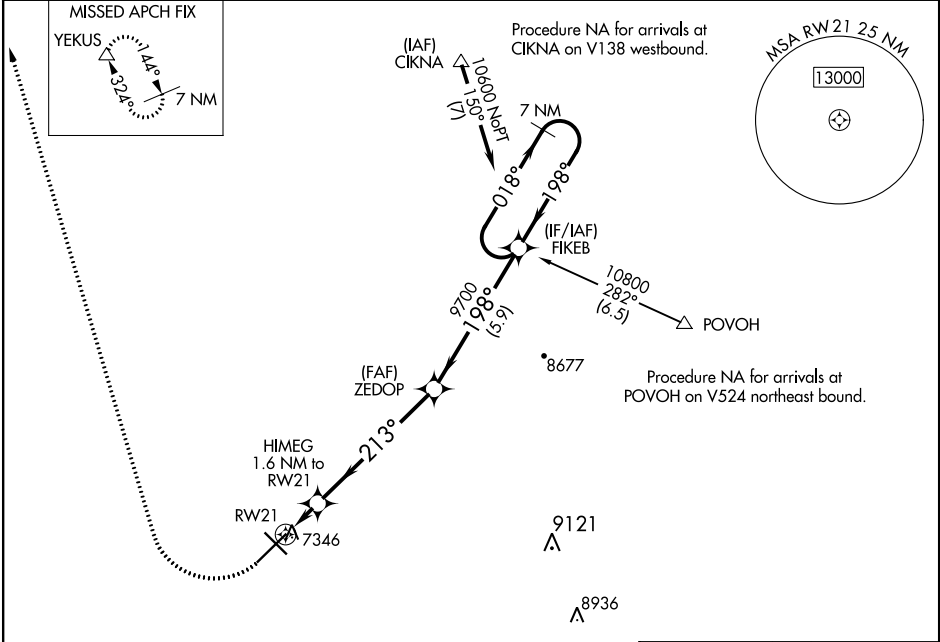
RNAV (GPS) RWY 21

LARAMIE RGNL (L.A.R.)

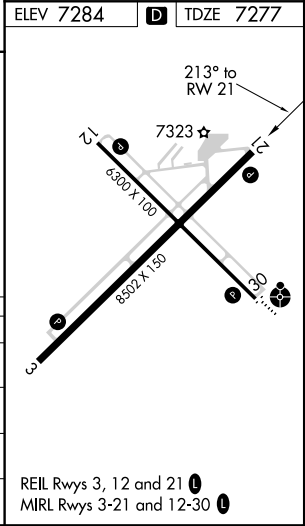
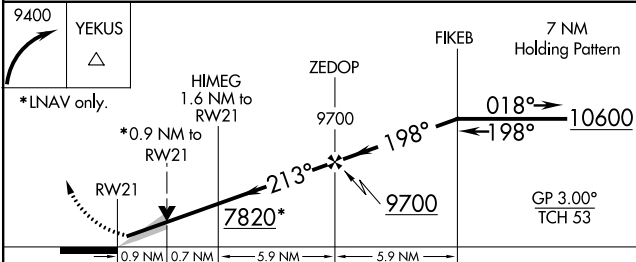
WAAS CH 72825 W21A	APP CRS 213°	Rwy Idg TDZE 7277 Apt Elev 7284	8502
--	------------------------	---	-------------

<p>Circling to Rwy 30 NA at night. Baro-VNAV NA. DME/DME RNP-0.3 NA.</p>	<p>MISSED APPROACH: Climbing right turn to 9400 direct YEKUS and hold.</p>
--	--

<p>ASOS 135.475</p>	<p>DENVER CENTER 125.9 284.7</p>	<p>UNICOM 123.05 (CTAF) </p>
--------------------------------	---	---



ELEV 7284		TDZE 7277
-----------	--	-----------



CATEGORY	A	B	C	D
LPV DA		7527- $\frac{3}{4}$	250 (300- $\frac{3}{4}$)	
LNAV/VNAV DA		7527- $\frac{3}{4}$	250 (300- $\frac{3}{4}$)	
LNAV MDA		7600-1	323 (400-1)	
CIRCLING	7660-1 376 (400-1)	7760-1 476 (500-1)	7880-1 $\frac{1}{2}$ 596 (600-1 $\frac{1}{2}$)	7920-2 636 (700-2)

NW-1, 09 SEP 2021 to 07 OCT 2021

NW-1, 09 SEP 2021 to 07 OCT 2021