

LAS VEGAS, NEVADA

HI-ILS or LOC Z RWY 21L

LOC I-DIQ 109.1	APCH CRS 209°	Rwy ldg	21L	21R
		TDZE	10,051	10,120
		Arpt Elev	1865	1869

AL-227 (USAF)

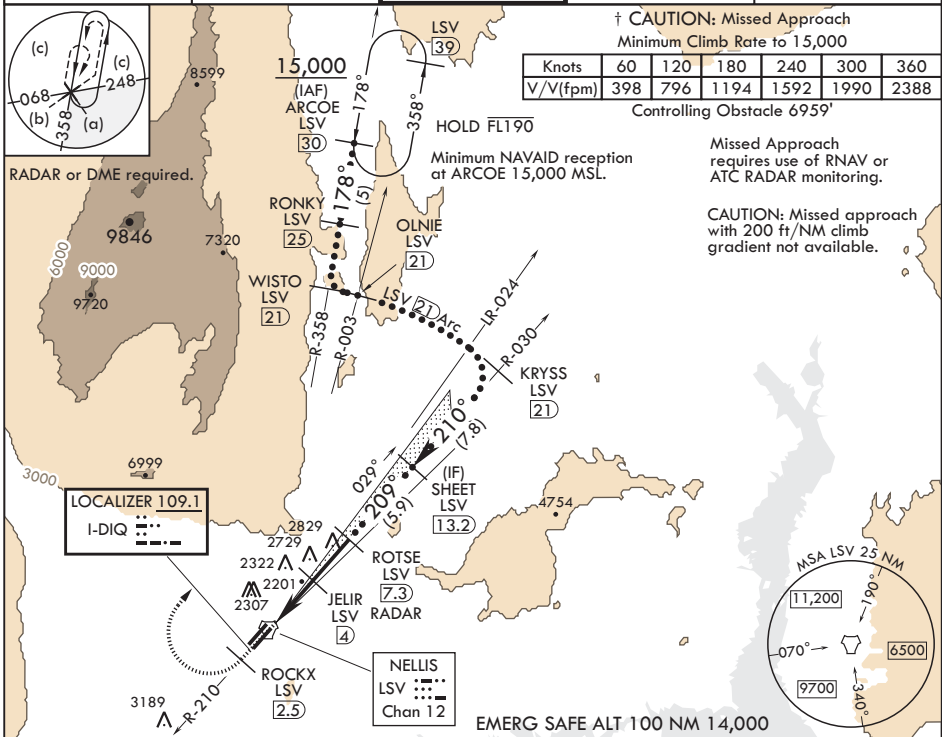
NELLIS AFB (KLSV)

† When ALS inop, increase RVR to 40, vis to 3/4 mile.
 ** When ALS inop, increase vis to 1 3/4 miles.
 *** Circling not authorized E of Rwy 3R-21L.



† MISSED APPROACH: Climb to 15,000, intercept LSV TACAN R-210 to 2.5 DME (ROCKX), then climbing right turn heading 028° to join LSV R-358 to ARCOE and hold, continue climb in hold to 15,000. Missed approach not for civil use.

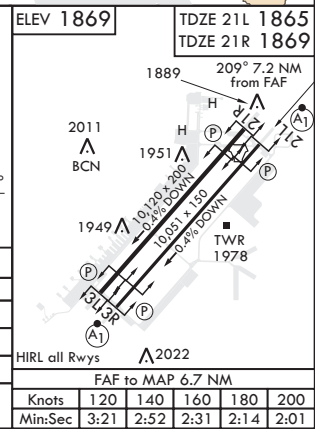
ATIS 270.1	APP CON 124.95 273.55	TOWER 132.55 327.0	GND CON 121.8 275.8	CLNC DEL 120.9 289.4
----------------------	---------------------------------	------------------------------	-------------------------------	--------------------------------



SW-4, 09 SEP 2021 to 07 OCT 2021

SW-4, 09 SEP 2021 to 07 OCT 2021

15,000 LSV R-210 ROCKX LSV 2.5 VGSi and ILS glidepath not coincident (VGSi Angle 3.00/TCH 54). ‡ LOC only TACAN SESDE 1.6 † 1.8 3140 ‡ 0.4 ← 3.4 NM → 3.3 NM	ROCKX LSV 2.5	VGSi and ILS glidepath not coincident (VGSi Angle 3.00/TCH 54).	OLNIE R-030 21	WISTO R-358 21
	JELIR RADAR 4	ROTSE Intep Lczz 7.3	SHEET 13.2	KRYSS R-003 21
	5000	8800	12,500	GS 3.00° TCH 50
	2011 BCN	1951 H	1949 A	TWR 1978
	2022	2022	2022	2022
CATEGORY	C	D	E	
S-ILS 21L*	2065-24	200	(200-1/2)	
S-LOC 21L**	2460-1 1/4	595	(600-1 1/4)	
SIDESTEP 21R	2500-1 1/4	631	(700-1 1/4)	
CIRCLING***	2620-2 1/4 751 (800-2 1/4)	2840-3 971 (1000-3)	3040-3 1171 (1200-3)	



LAS VEGAS, NEVADA

36°14'N - 115°02'W

NELLIS AFB (KLSV)

Amdt 9 22APR21

HI-ILS or LOC Z RWY 21L