

LAS VEGAS, NEVADA

HI-TACAN RWY 3R

TACAN LSV Chan 12	APCH CRS 029°	Rwy ldg 10,051 TDZE 1833 Arprt Elev 1869
-------------------	---------------	--

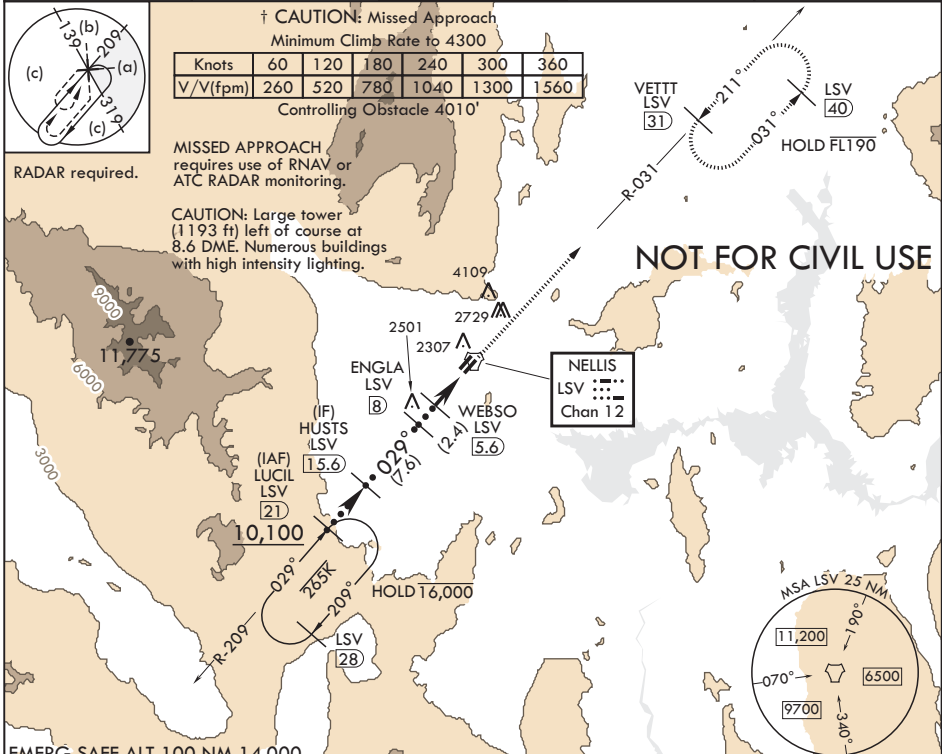
AL-227 (USAF)

NELLIS AFB (KLSV)

† * When ALS inop, increase vis to 2 1/2 miles.
 ** When ALS inop, increase vis to 1 3/8 miles.
 *** Circling not authorized E of Rwy 3R-21L.

ALSF-1 † MISSED APPROACH: Climb to 9000 on LSV TACAN R-031 to VETTT and hold.

ATIS 270.1	APP CON 124.95 273.55	TOWER 132.55 327.0	GND CON 121.8 275.8	CLNC DEL 120.9 289.4
------------	-----------------------	--------------------	---------------------	----------------------



EMERG SAFE ALT 100 NM 14,000

HUSTS 15.6

ENGLA LSV 8

WEBSO LSV 5.6

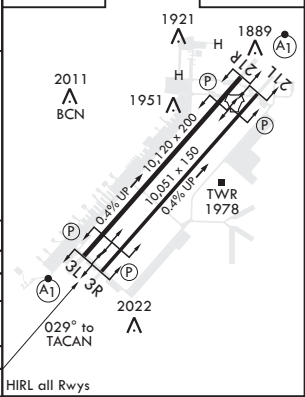
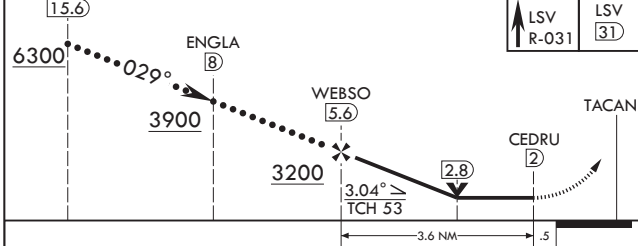
TACAN

9000 LSV R-031

VETTT LSV 31

ELEV 1869

TDZE 1833



CATEGORY	C	D	E
S-3R*	2740-2	907	(900-2)
☐ CIRCLING***	2740-2½ 871 (900-2½)	2840-3 971 (1000-3)	3040-3 1171 (1200-3)
† BELOW MINIMA REQUIRES MISSED APPROACH CLIMB GRADIENT			
S-3R**	2280/45	447	(500-¾)

LAS VEGAS, NEVADA
 Amdt 9 22APR21

36°14'N - 115°02'W

NELLIS AFB (KLSV)

HI-TACAN RWY 3R

SW-4, 09 SEP 2021 to 07 OCT 2021

SW-4, 09 SEP 2021 to 07 OCT 2021