

LAS VEGAS, NEVADA

ILS or LOC X RWY 21L

LOC I-DIQ 109.1	APCH CRS 209°	Rwy Idg 21L	10,051	21R	10,120
		TDZE	1865		1869
		Arprt Elev	1869		

AL-227 (USAF)

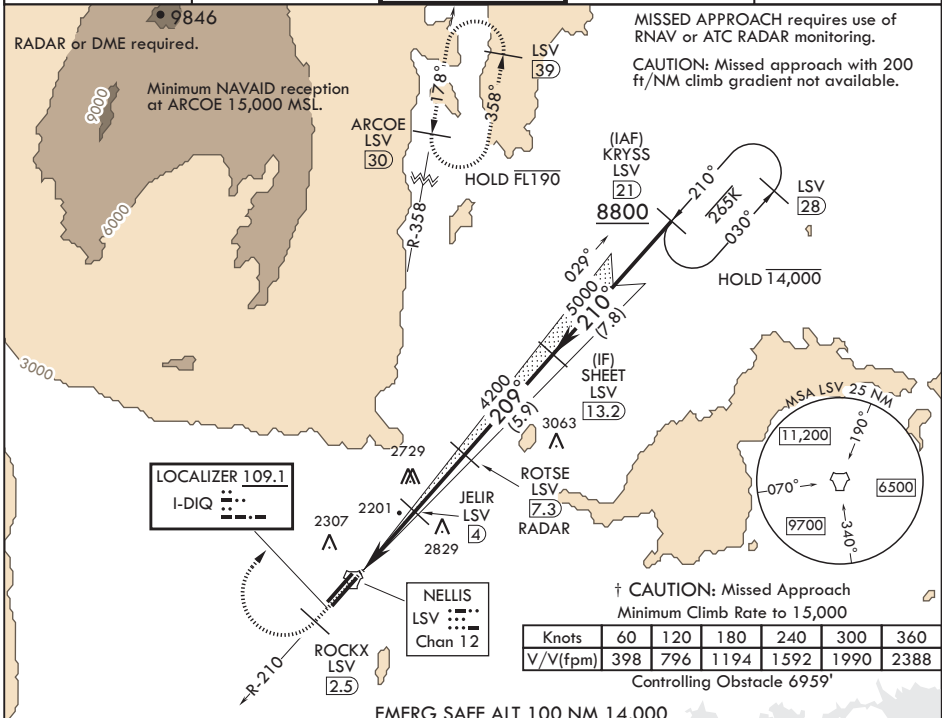
NELLIS AFB (KLSV)

* When ALS inop, increase RVR to 40, vis to 3/4 mile.
 ** When ALS inop, increase CAT AB RVR to 55, vis to 1 mile, CAT CDE vis to 1 3/4 miles.
 *** Circling not authorized E of Rwy 3R-21L.

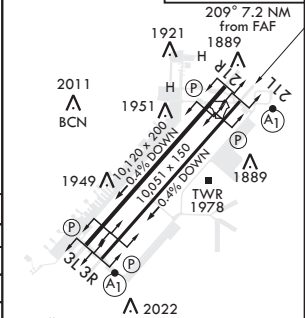
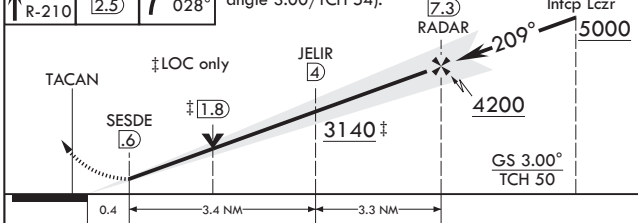


† MISSED APPROACH: Climb to 15,000, intercept LSV TACAN R-210 to 2.5 DME (ROCKX), then climbing right turn heading 028° to join LSV R-358 to ARCOE and hold, continue climb in hold to 15,000. Missed approach not for civil use.

ATIS 270.1	APP CON 124.95 273.55	TOWER 132.55 327.0	GND CON 121.8 275.8	CLNC DEL 120.9 289.4
----------------------	---------------------------------	------------------------------	-------------------------------	--------------------------------



15,000 LSV R-210	ROCKX LSV 2.5	hdg 028°	VGSI and ILS glidepath not coincident (VGSI angle 3.00/TCH 54).	ROTSE 7.3 RADAR	SHEET 13.2 Intcp Lczt	ELEV 1869	TDZE 21L 1865	TDZE 21R 1869
------------------	---------------	----------	---	-----------------	-----------------------	-----------	---------------	---------------



CATEGORY	A	B	C	D	E
S-ILS 21L*	2065/24		200	(200-1/2)	
S-LOC 21L**	2460/24	595 (600-1/2)	2460-1/4	595	(600-1/4)
SIDESTEP 21R	2500-1	631 (700-1)	2500-1/4	631	(700-1/4)
CIRCLING***	2460-1 591 (600-1)	2620-1 751 (800-1)	2620-2 1/4 751 (800-2 1/4)	2840-3 971 (1000-3)	3040-3 1171 (1200-3)

FAF to MAP 6.7 NM					
Knots	60	90	120	150	180
Min:Sec	6:42	4:28	3:21	2:41	2:14

LAS VEGAS, NEVADA
Amdt 10 22APR21

36°14'N - 115°02'W

NELLIS AFB (KLSV)

ILS or LOC X RWY 21L

SW-4, 09 SEP 2021 to 07 OCT 2021

SW-4, 09 SEP 2021 to 07 OCT 2021