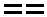


MORMON MESA SEVEN DEPARTURE (MMM7 • MMM)

NELLIS AFB (KLSV)
LAS VEGAS, NEVADA

SHL-227 [USAF]

ATIS 270.1
 CLNC DEL
 120.9 289.4
 GND CON
 121.8 275.8
 NELLIS TOWER
 132.55 327.0
 NELLIS DEP CON
 135.1 385.4
 LOS ANGELES CENTER
 124.2 134.65 307.9 343.6

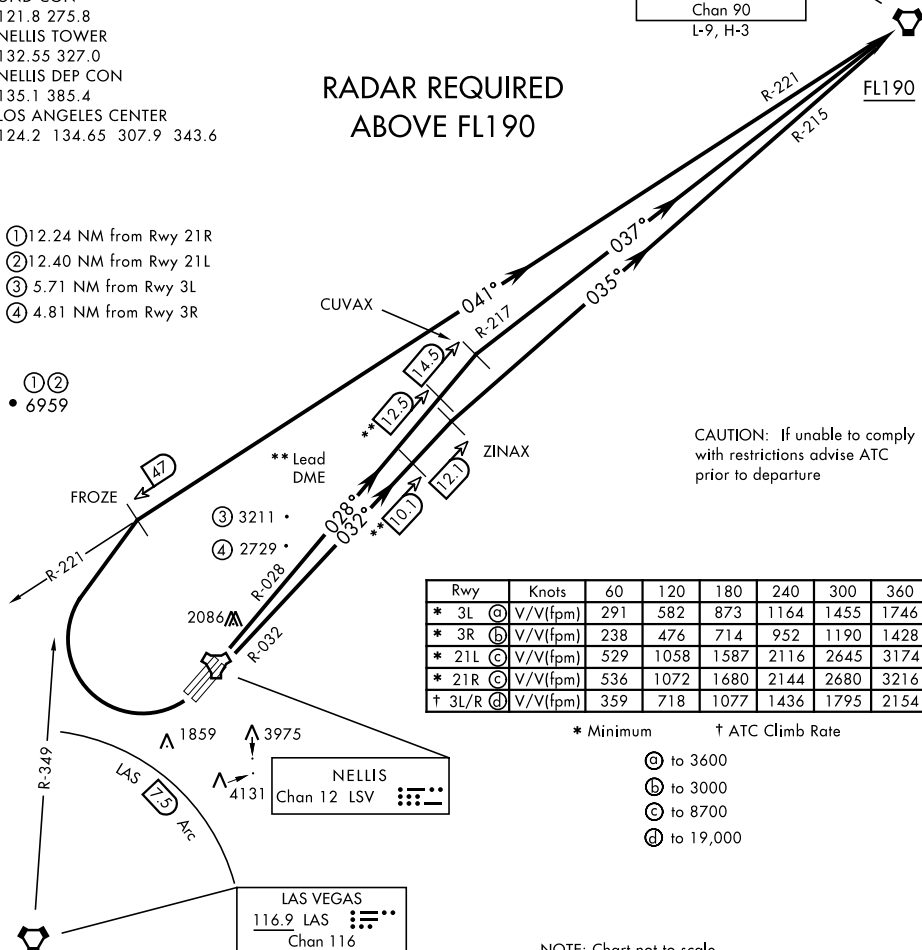
MORMON MESA
 114.3 MMM 
 Chan 90
 L-9, H-3

RADAR REQUIRED ABOVE FL190

- ① 12.24 NM from Rwy 21R
- ② 12.40 NM from Rwy 21L
- ③ 5.71 NM from Rwy 3L
- ④ 4.81 NM from Rwy 3R

① ②
 • 6959

CAUTION: If unable to comply with restrictions advise ATC prior to departure



Rwy	Knots	60	120	180	240	300	360
* 3L ③	V/V(fpm)	291	582	873	1164	1455	1746
* 3R ④	V/V(fpm)	238	476	714	952	1190	1428
* 21L ③	V/V(fpm)	529	1058	1587	2116	2645	3174
* 21R ③	V/V(fpm)	536	1072	1680	2144	2680	3216
† 3L/R ④	V/V(fpm)	359	718	1077	1436	1795	2154

* Minimum † ATC Climb Rate

- ③ to 3600
- ④ to 3000
- ③ to 8700
- ④ to 19,000

NOTE: Chart not to scale

DEPARTURE ROUTE DESCRIPTION

TAKE-OFF RWY 3L: Fly runway heading to intercept LSV TACAN R-028 then direct CUVAX, intercept the MMM VORTAC R-217 then direct MMM climbing to FL190 or as assigned, then via assigned route.

TAKE-OFF RWY 3R: Fly runway heading to intercept LSV TACAN R-032 then direct ZINAX, intercept the MMM VORTAC R-215 then direct MMM climbing to FL190 or as assigned, then via assigned route.

TAKE-OFF RWY 21L/R: Turn right to intercept MMM VORTAC R-221 prior to MMM 47 DME (FROZE), remain north of the LAS VORTAC 7.5 DME, remain East of LAS R-349, intercept MMM R-221 then direct MMM, cross MMM at or above FL190 then via assigned route.

NOISE ABATEMENT PROCEDURES: Fly IAW Nellis Noise Abatement instructions published in AP/1.

MORMON MESA SEVEN DEPARTURE (MMM7 • MMM)

Amdt 6 26MAR20

LAS VEGAS, NEVADA
NELLIS AFB (KLSV)

SW-4, 09 SEP 2021 to 07 OCT 2021

SW-4, 09 SEP 2021 to 07 OCT 2021