

LAS VEGAS, NEVADA

TACAN X RWY 21L

TACAN LSV Chan 12	APCH CRS 210°
-------------------	---------------

Rwy ldg	21L 10,051	21R 10,120
TDZE	1865	1869
Arprt Elev	1869	

AL-227 (USAF)

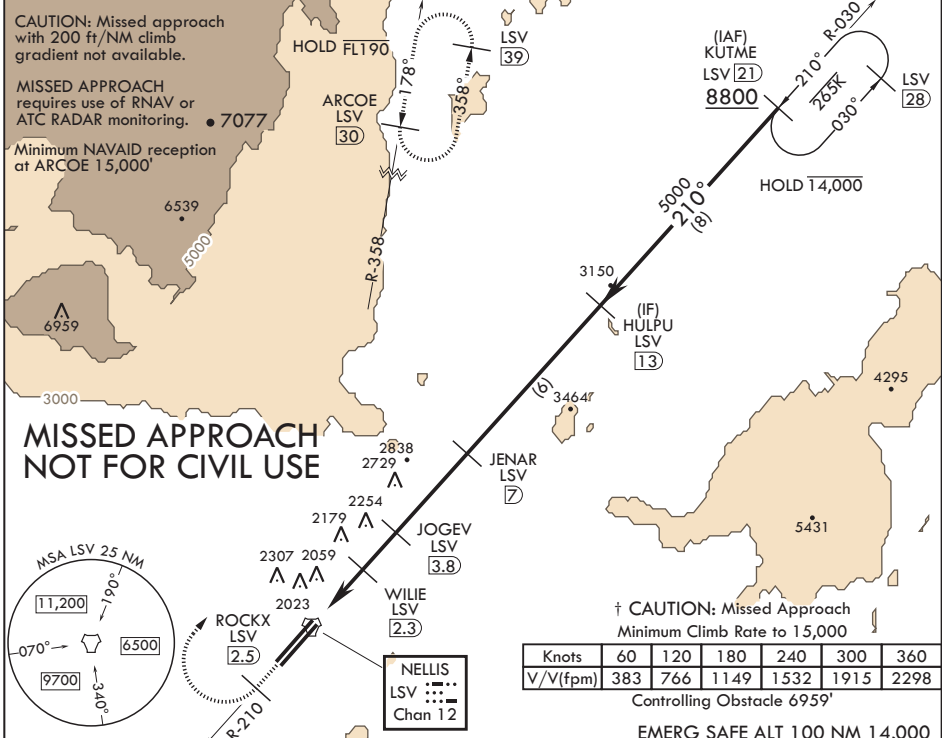
NELLIS AFB (KLSV)

⚠ * When ALS inop, increase CAT AB RVR to 55, vis to 1 mile, CAT CDE vis to 1 3/4 miles.
 ** Circling not authorized E of Rwy 3R-21L.

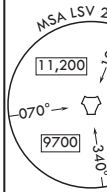


† MISSED APPROACH: Climb to 15,000, intercept LSV TACAN R-210 to 2.5 DME (ROCKX), then climbing right turn heading 028° to join LSV R-358 to ARCOE and hold. Missed approach not for civil use.

ATIS 270.1	APP CON 124.95 273.55	TOWER 132.55 327.0	GND CON 121.8 275.8	CLNC DEL 120.9 289.4
------------	-----------------------	--------------------	---------------------	----------------------



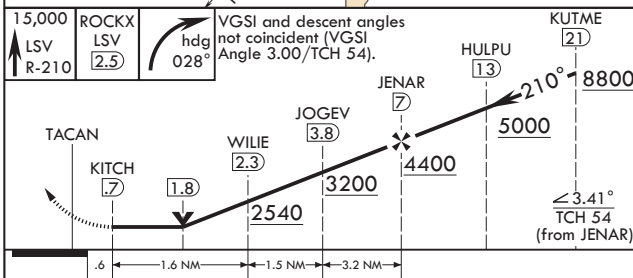
MISSED APPROACH NOT FOR CIVIL USE



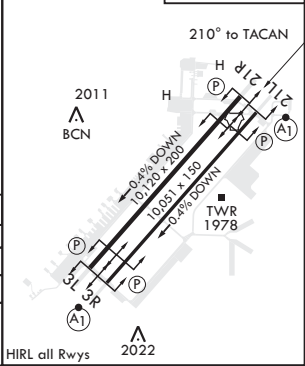
Knots	60	120	180	240	300	360
V/V(fpm)	383	766	1149	1532	1915	2298

Controlling Obstacle 6959'

EMERG SAFE ALT 100 NM 14,000



ELEV 1869	TDZE 21L 1865	TDZE 21R 1869
-----------	---------------	---------------



CATEGORY	A	B	C	D	E
S-21L*	2460/24 595 (600-1/2)		2460-1 1/4 595 (600-1/4)		
SIDESTEP 21R	2460-1 591 (600-1)		2460-1 1/4 591 (600-1/4)		
Ⓢ CIRCLING**	2460-1 591 (600-1)	2620-1 751 (800-1)	2620-2 1/4 751 (800-2 1/4)	2840-3 971 (1000-3)	3040-3 1171 (1200-3)

LAS VEGAS, NEVADA
Amdt 9 22APR21

36°14'N - 115°02'W

NELLIS AFB (KLSV)

TACAN X RWY 21L

SW-4, 09 SEP 2021 to 07 OCT 2021

SW-4, 09 SEP 2021 to 07 OCT 2021