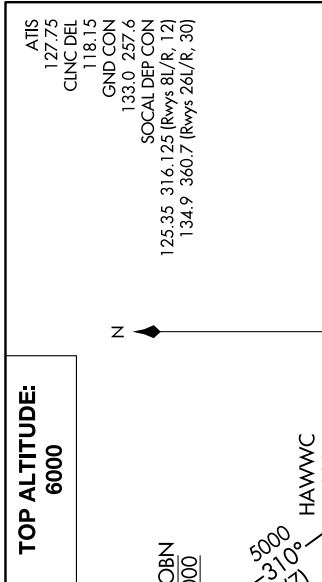


SW-3, 09 SEP 2021 to 07 OCT 2021



NOTE: Chart not to scale.

**DEPARTURE ROUTE DESCRIPTION**

**TAKEOFF RUNWAYS 8L/R:** Climb heading 076° to 580, then on heading 076° or as assigned by ATC for vectors to PIJIN, cross PIJIN at or above 4000, then on track 290° to cross HAWWC at or above 5000, thence . . . . .

**TAKEOFF RUNWAY 12:** Climb heading 121° to 580, then on heading 121° or as assigned by ATC for vectors to PIJIN, cross PIJIN at or above 4000, then on track 290° to cross HAWWC at or above 5000, thence . . . . .

**TAKEOFF RUNWAY 26L:** Climb heading 256° to 800, then on heading 270° or as assigned by ATC for vectors to PIJIN, cross PIJIN at or above 4000, then on track 290° to cross HAWWC at or above 5000, thence . . . . .

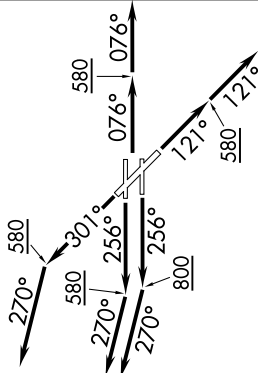
**TAKEOFF RUNWAY 26R:** Climb heading 256° to 580, then on heading 270° or as assigned by ATC for vectors to PIJIN, cross PIJIN at or above 4000, then on track 290° to cross HAWWC at or above 5000, thence . . . . .

**TAKEOFF RUNWAY 30:** Climb heading 301° to 580, then on heading 270° or as assigned by ATC for vectors to PIJIN, cross PIJIN at or above 4000, then on track 290° to cross HAWWC at or above 5000, thence . . . . .

. . . . on (transition). Maintain 6000. Expect higher altitude 10 minutes after departure.

**IKAYE TRANSITION (HAWWC3.IKAYE)**

ATIS 127.75  
 CINCL DEL 118.15  
 GND CON 133.0 257.6  
 SOCAL DEP CON 125.35 316.125 (Rwys 8L/R, 12)  
 134.9 360.7 (Rwys 26L/R, 30)



**TAKEOFF MINIMUMS**

Rwys 8L/R, 12, 30: Standard.  
 Rwy 26L: Standard with minimum climb of 330° per NM to 700.  
 Rwy 26R: Standard with minimum climb of 230° per NM to 1600.

- NOTE: RADAR required.
- NOTE: RNAV 1.
- NOTE: DME/DME/IRU or GPS required.
- NOTE: This procedure not authorized for turbojet aircraft.

SW-3, 09 SEP 2021 to 07 OCT 2021