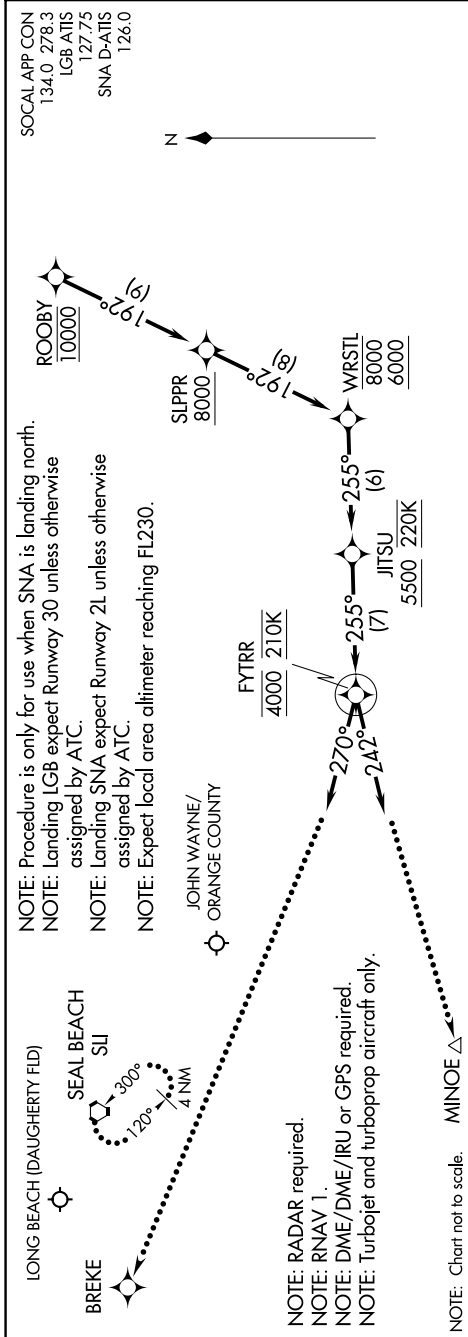


1200 SEP 2021 to 07 OCT 2021 'E-W5



ARRIVAL ROUTE DESCRIPTION

**LANDING LGB:** From ROOBY on track 192° to cross SLPPR at or above 8000, then on track 192° to cross WRSTL between 6000 and 8000, then on track 255° to cross JITSU at or above 5500 and at 220K, then on track 255° to cross FYTRR at 4000 and at 210K, then on heading 270° or as assigned by ATC. Expect RADAR vectors to final approach course.

**LANDING SNA:** From ROOBY on track 192° to cross SLPPR at or above 8000, then on track 192° to cross WRSTL between 6000 and 8000, then on track 255° to cross JITSU at or above 5500 and at 220K, then on track 255° to cross FYTRR at 4000 and at 210K, then on heading 242° or as assigned by ATC. Expect RADAR vectors to final approach course.

**LOST COMMUNICATIONS:**

**LANDING LGB RUNWAY 30:** Intercept and proceed on the RNAV (RNP) RWY 30 or ILS RWY 30 approach.

**LANDING LGB RUNWAY 12:** Maintain 3000 and proceed direct BREKE then on the RNAV (RNP) RWY 12 approach. If unable approach to LGB climb to 4000 direct SLI VORTAC and hold.

**LANDING SNA RUNWAY 2L:** Proceed on the RNAV (RNP) RWY 2L approach or maintain 3000 and proceed direct MINOE then on the LOC BC RWY 2L approach. If unable approach to SNA climb to 5000 direct SLI VORTAC and hold.