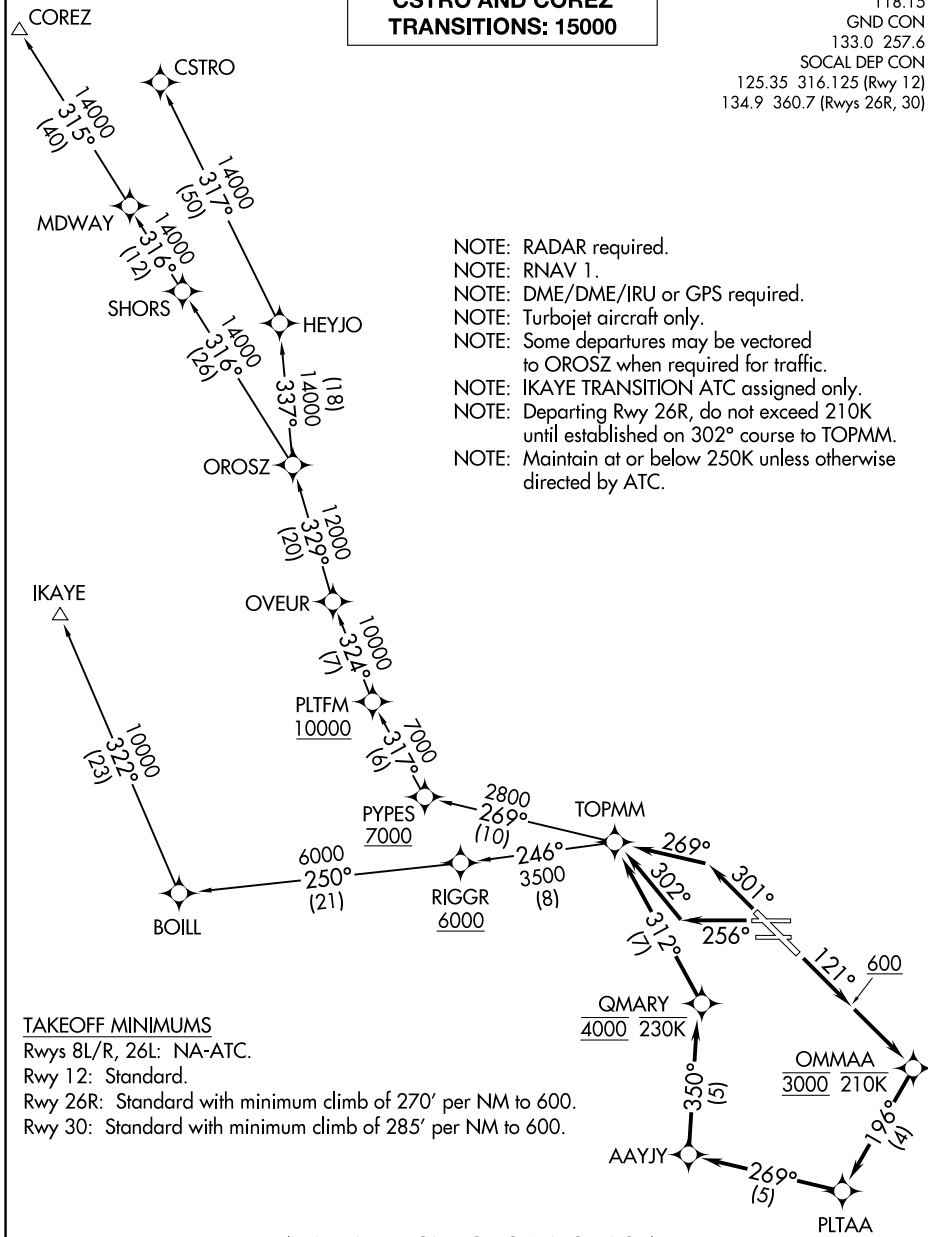


TOPMM FOUR DEPARTURE (RNAV)

TOP ALTITUDE:
IKAYE TRANSITION: 12000;
CSTRO AND COREZ
TRANSITIONS: 15000

ATIS
127.75
CLNC DEL
118.15
GND CON
133.0 257.6
SOCAL DEP CON
125.35 316.125 (Rwys 12)
134.9 360.7 (Rwys 26R, 30)

- NOTE: RADAR required.
- NOTE: RNAV 1.
- NOTE: DME/DME/IRU or GPS required.
- NOTE: Turbojet aircraft only.
- NOTE: Some departures may be vectored to OROSZ when required for traffic.
- NOTE: IKAYE TRANSITION ATC assigned only.
- NOTE: Departing Rwy 26R, do not exceed 210K until established on 302° course to TOPMM.
- NOTE: Maintain at or below 250K unless otherwise directed by ATC.



SW-3, 09 SEP 2021 to 07 OCT 2021

SW-3, 09 SEP 2021 to 07 OCT 2021

TAKEOFF MINIMUMS
 Rwys 8L/R, 26L: NA-ATC.
 Rwy 12: Standard.
 Rwy 26R: Standard with minimum climb of 270' per NM to 600.
 Rwy 30: Standard with minimum climb of 285' per NM to 600.

NOTE: Chart not to scale.

(NARRATIVE ON FOLLOWING PAGE)

TOPMM FOUR DEPARTURE (RNAV)