

DARRK THREE DEPARTURE (RNAV)

AL-237 (FAA)

LOS ANGELES INTL (LAX)
LOS ANGELES, CALIFORNIA

120201 SW-3, 09 SEP 2021 to 07 OCT 2021

TOP ALTITUDE:
FL230

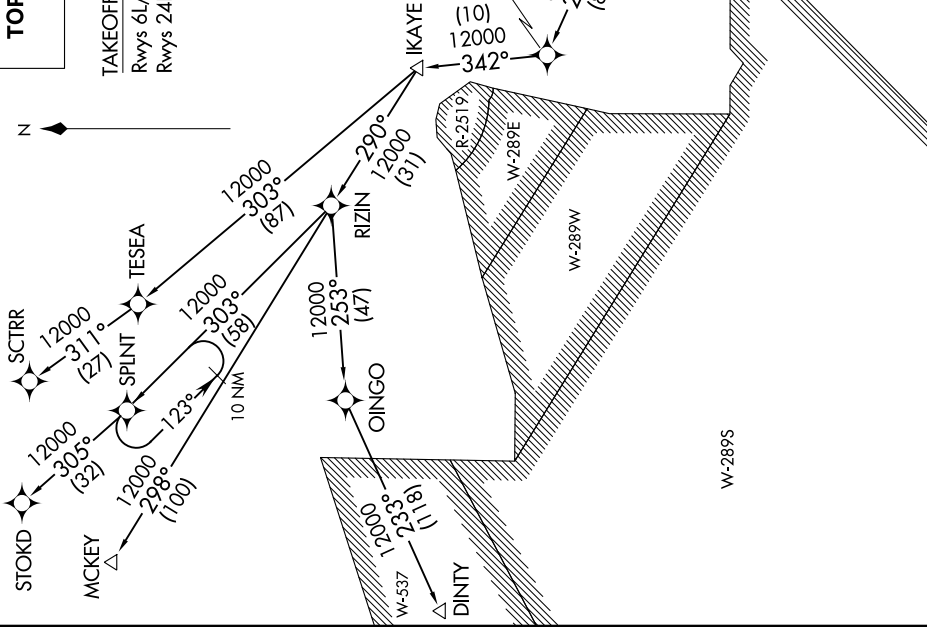
TAKEOFF MINIMUMS

Rwys 6L/R, 7L/R: NA - ATC.
Rwys 24L/R, 25L/R: Standard with minimum climb of 500' per NM to 640'.

D-ATIS DEP 135.65
CLNC DEL 120.35 327.0
CPDLC
GND CON (N) 121.65 327.0
(S) 121.75 327.0
(W) 121.4 327.0
LOS ANGELES TOWER (N) 133.9 239.3
(S) 120.95 379.1
SOCAL DEP CON 124.3 363.2 (045°-224°)
125.2 263.025 (225°-044°)

NOTE: RNAV 1.
NOTE: RADAR required.
NOTE: STOKD, SCTRR and MCKEY transitions: DME/DME/IRU or GPS required.
NOTE: DINTY transitions: GPS only.
NOTE: Turbojet aircraft only.

NOTE: File the RIZIN TRANSITION in lieu of the LADYJ DEPARTURE during time periods 2100-0700 LCL. All other times RIZIN TRANSITION ATC assigned only.



(NARRATIVE ON FOLLOWING PAGE)

NOTE: Chart not to scale.

DARRK THREE DEPARTURE (RNAV)

LOS ANGELES, CALIFORNIA
LOS ANGELES INTL (LAX)

SW-3, 09 SEP 2021 to 07 OCT 2021