

LOC/DME I-OSS 108.5 Chan 22	APP CRS 251°	Rwy Idg 8926 TDZE 122 Apt Elev 128
---	------------------------	---

ILS RWY 24R (CAT II & III)

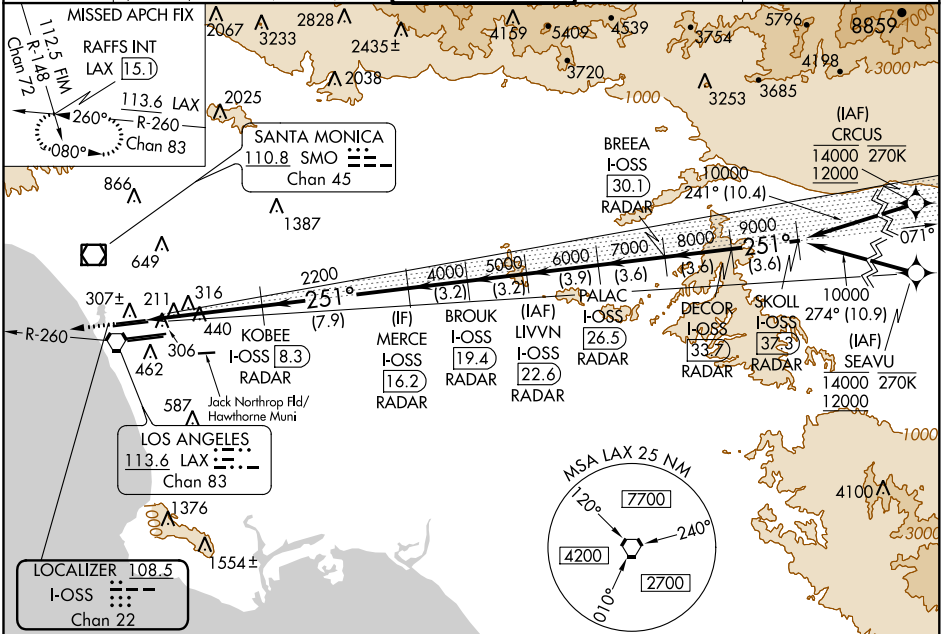
LOS ANGELES INTL (LAX)

From CRCSU, SEAVU: RNAV 1-GPS required. DME or RADAR required.

Simultaneous approach authorized with HHR.
Simultaneous approach authorized.

ALSF-2
MISSED APPROACH: Climb to 2000 on heading 251° and LAX VORTAC R-260 to RAFFS INT/LAX 15.1 DME and hold.

D-ATIS ARR 133.8 DEP 135.65	SOCAL APP CON 124.3 363.2 [APCH FM WEST] 124.5 235.975 [225°-044°]	124.9 269.0 [090°-224°] 128.5 360.7 [045°-089°]	LOS ANGELES TOWER N 133.9 239.3 S 120.95 379.1	GND CON N 121.65 327.0 S 121.75 327.0 W 121.4 327.0	CLNC DEL 120.35 327.0	CPDLC
---	--	--	--	---	---	-------



SW-3, 09 SEP 2021 to 07 OCT 2021

SW-3, 09 SEP 2021 to 07 OCT 2021

ELEV 128	TDZE 122	2000 ↑ hdg 251°	LAX R-260	RAFFS INT	VGSI and ILS glidepath not coincident (VGSI Angle 3.00/TCH 73).	DECOR I-OSS [33.7]	SKOLL I-OSS [37.3]			
		KOBEE I-OSS [8.3] RADAR		MERC I-OSS [16.2] RADAR	BROUK I-OSS [19.4] RADAR	LIVVN I-OSS [22.6] RADAR	PALC I-OSS [26.3] RADAR	BREA I-OSS [30.1] RADAR	251°	10000
		2200		4000	5000	6000	7000	8000	9000	GS 3.00° TCH 55
		10.2 NM	6.4 NM	7.9 NM	3.2 NM	3.2 NM	3.9 NM	3.6 NM	3.6 NM	3.6 NM
CATEGORY	A		B		C		D			
S-ILS 24R	CAT II RA 118/12 100 DA 222									
S-ILS 24R	CAT III RVR 06									
CATEGORY II & III ILS - SPECIAL AIRCREW & AIRCRAFT CERTIFICATION REQUIRED										