

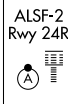
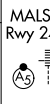
LOC/DME I-HQB 111.7 Chan 54	APP CRS 251°	Rwy Idg TDZE Apt Elev	24L 9483 123 128	24R 8926 122 128
---	------------------------	-----------------------------	--	--

ILS or LOC RWY 24L

LOS ANGELES INTL (LAX)

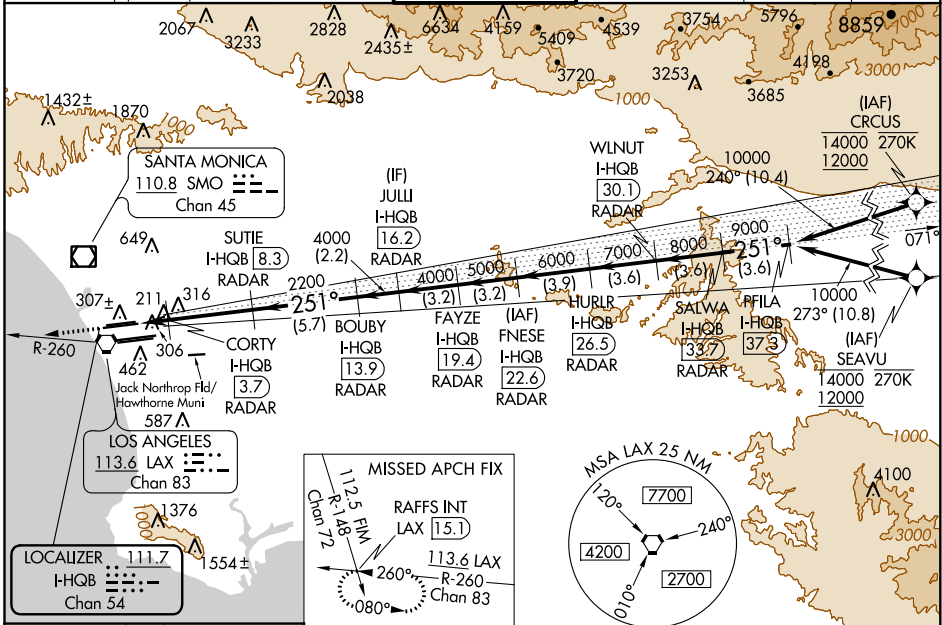
RNAV 1-GPS or RADAR required for procedure entry. DME or RADAR required.
From CRCLUS: RNAV 1-GPS required. From SEAVU: RNAV 1-GPS required.

Simultaneous approach authorized with HHR. Inop table does not apply to Sidestep Rwy 24R Cat A and B. Simultaneous approach authorized. LOC procedure NA during simultaneous operations with HHR LOC RWY 25. For inop ALS, increase Sidestep 24R Cat C visibility to 1/2SM. For inop ALS, increase S-LOC 24L Cat C/D visibility to RVR 5500. #RVR 1800 authorized with use of FD or AP or HUD to DA.



MISSED APPROACH:
Climb to 2000 on heading 251° and LAX VORTAC R-260 to RAFFS INT/LAX 15.1 DME and hold.

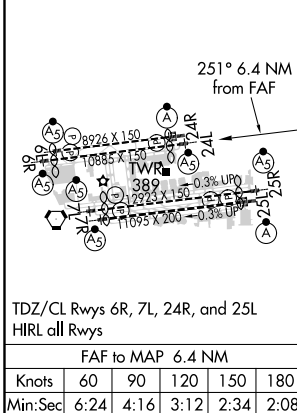
D-ATIS ARR 133.8 DEP 135.65	SOCAL APP CON 124.3 363.2 (APCH FM WEST) 124.5 235.975 (225°-044°)	124.9 269.0 (090°-224°) 128.5 360.7 (045°-089°)	LOS ANGELES TOWER N 133.9 239.3 S 120.95 379.1	GND CON N 121.65 327.0 S 121.75 327.0 W 121.4 327.0	CLNC DEL 120.35 327.0	CPDLC
---	--	--	---	--	--	-------



SW-3, 09 SEP 2021 to 07 OCT 2021

SW-3, 09 SEP 2021 to 07 OCT 2021

ELEV 128	D	TDZE 24L 123	TDZE 24R 122
----------	----------	--------------	--------------



2000	LAX R-260	RAFFS INT	VGSI and ILS glidepath not coincident (VGSI Angle 3.00/TCH 79).				SALWA I-HQB	PFILA I-HQB			
hdg 251°						33.7	37.3				
*LOC only.	CORTY I-HQB	SUTIE I-HQB	BOUBY I-HQB	JULI I-HQB	FAYZE I-HQB	FNESE I-HQB	HURLR I-HQB	WLNUT I-HQB	RAFFS INT		
	3.7	8.3	13.9	16.2	19.4	22.6	26.5	30.1	15.1		
	RADAR	RADAR	RADAR	RADAR	RADAR	RADAR	RADAR	RADAR	RADAR		
	2200	2200	4000	4000	5000	6000	7000	8000	9000		
	1 NM	0.8	4.6 NM	5.7 NM	2.2 NM	3.2 NM	3.2 NM	3.9 NM	3.6 NM	3.6 NM	3.6 NM
CATEGORY	A			B			C			D	
S-ILS 24L#	323/24			200 (200-1/2)							
S-LOC 24L	500/24			377 (400-1/2)			500/35			377 (400-5/8)	
SIDESTEP 24R	500/55			378 (400-1)			500-1/2			378 (400-1/2)	