

LOS ANGELES, CALIFORNIA

AL-237 (FAA)

21140

LOC/DME I-OSS <b>108.5</b> Chan <b>22</b>	APP CRS <b>251°</b>	Rwy Idg	24R	24L
		TDZE	<b>8926</b>	<b>9483</b>
			<b>122</b>	<b>123</b>
		Apt Elev	<b>128</b>	<b>128</b>

# ILS or LOC RWY 24R

LOS ANGELES INTL (LAX)

From CRUCUS, SEAVU: RNAV 1-GPS required. DME or RADAR required.

Simultaneous approach authorized with HHR. LOC procedure NA during simultaneous operations with HHR LOC RWY 25.

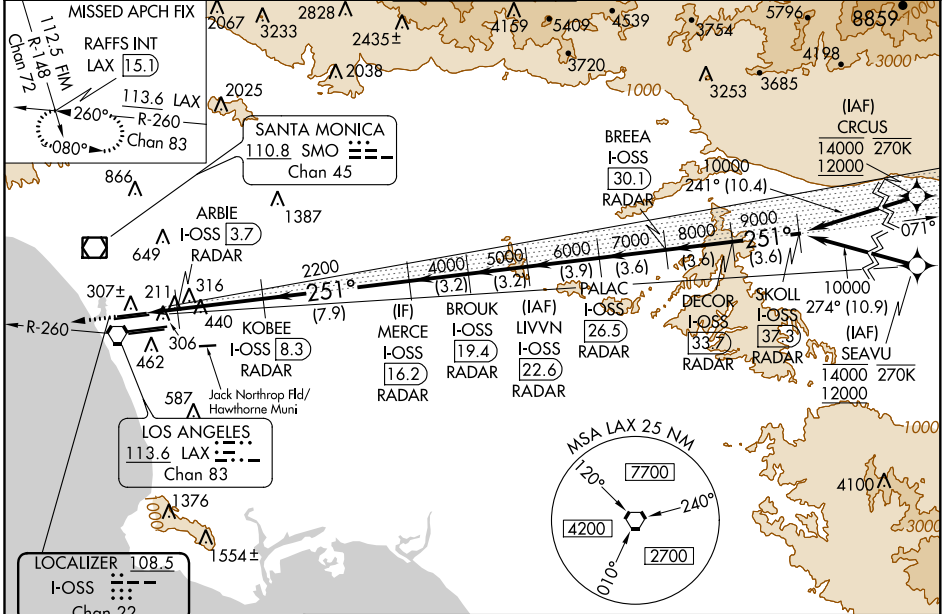
Simultaneous approach authorized. For info ALS, increase S-LOC 24R Cat C/D visibility to RVR 5500.

**ALSF-2 Rwy 24R**

**MALSR Rwy 24L**

MISSED APPROACH: Climb to 2000 on heading 251° and LAX VORTAC R-260 to RAFFS INT/LAX 15.1 DME and hold.

D-ATIS ARR <b>133.8</b> DEP <b>135.65</b>	<b>SOCAL APP CON</b> 124.3 363.2 124.9 269.0 (APCH FM WEST) (090°-224°) 124.5 235.975 128.5 360.7 (225°-044°) (045°-089°)	<b>LOS ANGELES TOWER</b> N <b>133.9 239.3</b> S <b>120.95 379.1</b>	<b>GND CON</b> N <b>121.65 327.0</b> S <b>121.75 327.0</b> W <b>121.4 327.0</b>	CLNC DEL <b>120.35 327.0</b>	CPDLC
---	---	---	--	---------------------------------	-------



SW-3, 09 SEP 2021 to 07 OCT 2021

SW-3, 09 SEP 2021 to 07 OCT 2021

ELEV 128	TDZE 24R 122 TDZE 24L 123	LAX R-260	RAFFS INT	VGSI and ILS glidepath not coincident (VGSI Angle 3.00/TCH 73).	SKOLL I-OSS 37.3 DECOR I-OSS 33.7
251° 6.4 NM from FAF					
CATEGORY		A	B	C	D
S-ILS 24R	322/18 200 (200-1/2)				
S-LOC 24R	480/24 358 (400-1/2)		480/30 358 (400-3/4)		
SIDESTEP 24L	500/55 377 (400-1)				500-1/2 377 (400-1/2)

LOS ANGELES, CALIFORNIA  
Amdt 26B 20MAY21

33°57'N-118°24'W

# LOS ANGELES INTL (LAX)

## ILS or LOC RWY 24R