

LOC/DME I-LAX	APP CRS	Rwy Idg	25L	25R
109.9	251°		11095	11134
Chan 36		TDZE	104	104
		Apt Elev	128	128

ILS or LOC RWY 25L

LOS ANGELES INTL (LAX)

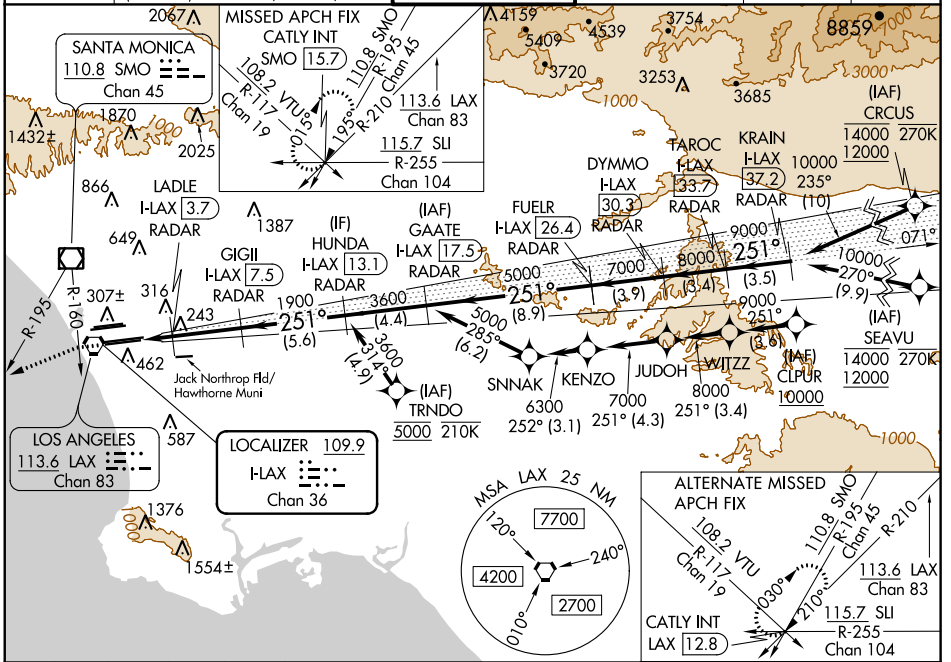
DME or RADAR required. From CLPUR, CRCUS, SEAVU, TRNDO: RNAV 1-GPS required.

⚠ Simultaneous approach authorized. Simultaneous approach authorized with HHR. LOC procedure NA during simultaneous operations with HHR LOC RWY 25.

ALSF-2 Rwy 25L MALS Rwy 25R

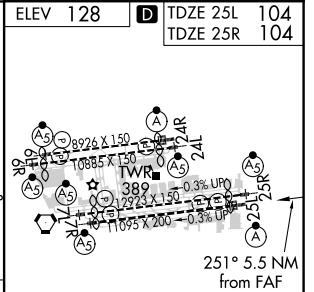
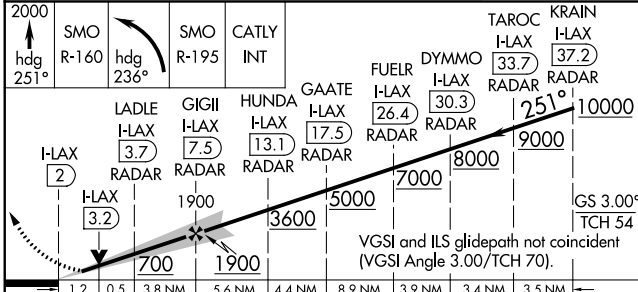
MISSED APPROACH: Climb to 2000 on heading 251° until crossing the SMO R-160, then left turn on heading 236° and on the SMO R-195 to CATLY INT/SMO 15.7 DME and hold.

D-ATIS	SOCAL APP CON	LOS ANGELES TOWER	GND CON	CLNC DEL	CPDLC
ARR 133.8	124.3 363.2 (APCH FM WEST)	124.9 269.0 (090°-224°)	N 121.65 327.0 S 121.75 327.0 W 121.4 327.0	120.35 327.0	
DEP 135.65	124.5 235.975 (225°-044°)	N 133.9 239.3 S 120.95 379.1 (045°-089°)			



SW-3, 09 SEP 2021 to 07 OCT 2021

SW-3, 09 SEP 2021 to 07 OCT 2021



CATEGORY	A	B	C	D
S-ILS 25L	304/18 200 (200-½)			
S-LOC 25L	540/24	436 (500-½)	540/40	436 (500-¾)
SIDESTEP 25R	540/55 436 (500-1)		540-1½ 436 (500-1½)	
TDZ/CL Rws 6R, 7L, 24R, and 25L HIRL all Rws FAF to MAP 5.5 NM Knots 60 90 120 150 180 Min:Sec 5:30 3:40 2:45 2:12 1:50				