

LOC/DME I-UWU <b>108.5</b> Chan <b>22</b>	APP CRS <b>071°</b>	Rwy Idg 6L <b>8566</b> 6R <b>9748</b> TDZE <b>119</b> <b>116</b> Apt Elev <b>128</b> <b>128</b>
---	------------------------	--

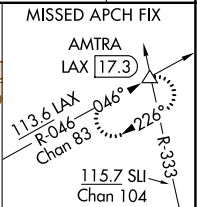
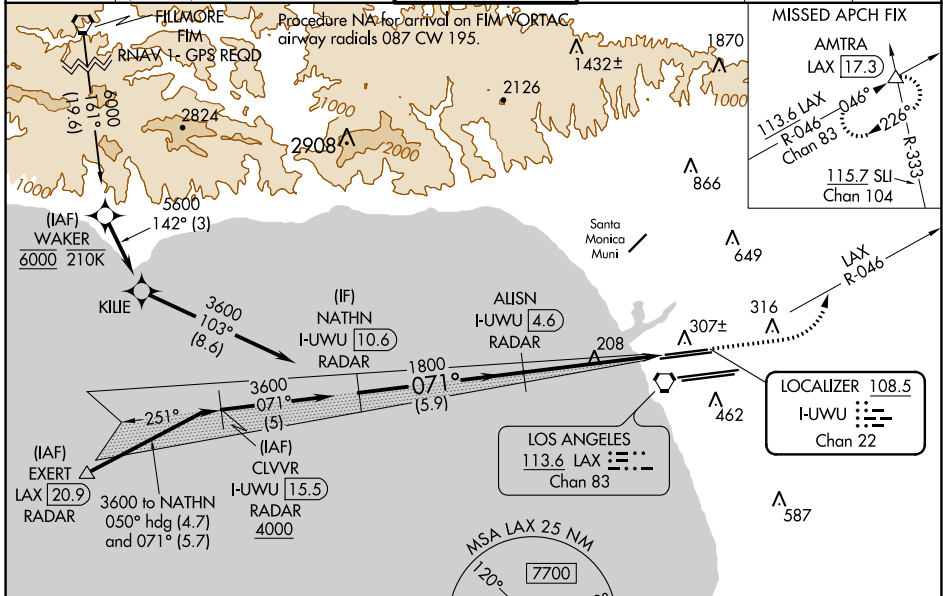
# ILS or LOC RWY 6L

LOS ANGELES INTL (LAX)

**▼** Inop table does not apply to Sidestep 6R Cats A/B. For inop ALS, increase S-LOC 6L Cat C/D visibility to RVR 5500. Simultaneous approach authorized.

MALSR Rwy 6L	MALSR Rwy 6R	MISSED APPROACH: Climb to 600 then climbing left turn to 3000 on LAX VORTAC R-046 to AMTRA INT/LAX 17.3 DME and hold.
--------------	--------------	---

D-ATIS ARR <b>133.8</b> DEP <b>135.65</b>	SOCAL APP CON <b>124.3 363.2</b> <b>124.9 269.0</b> (APCH FM WEST) (090°-224°) <b>124.5 235.975</b> <b>128.5 360.7</b> (225°-044°) (045°-089°)	LOS ANGELES TOWER <b>N 133.9 239.3</b> <b>S 120.95 379.1</b>	GND CON <b>N 121.65 327.0</b> <b>S 121.75 327.0</b> <b>W 121.4 327.0</b>	CLNC DEL <b>120.35</b> <b>327.0</b>	CPDLC
---	--	--	---	---	-------

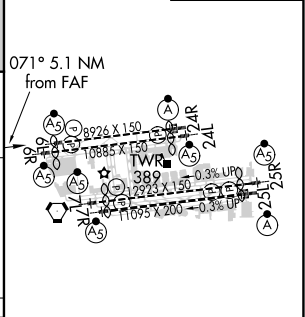
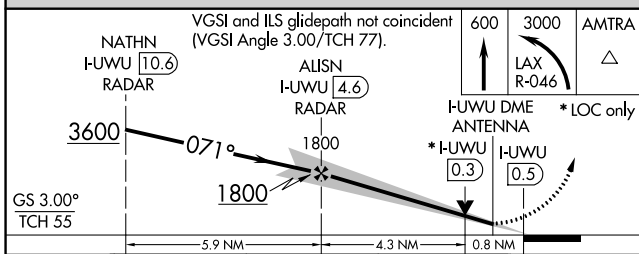


Procedure NA for arrivals at EXERT on V25 southwest bound, V27 northwest bound.

**DME or RADAR REQUIRED**

MSA LAX 25 NM  
7700, 4200, 2700  
120°, 240°, 010°

ELEV 128	TDZE 6L 119
	TDZE 6R 116



CATEGORY	A	B	C	D
S-ILS 6L	369/24 250 (300-½)			
S-LOC 6L	460/24 341 (400-½)	460/30 341 (400-¾)		
SIDESTEP 6R	460/55 344 (400-1)			460-1½ 344 (400-1½)

TDZ/CL Rwy 6R, 7L, 24R, and 25L HIRL all Rwy					
FAF to MAP 5.1 NM					
Knots	60	90	120	150	180
Min:Sec	5:06	3:24	2:33	2:02	1:42

SW-3, 09 SEP 2021 to 07 OCT 2021

SW-3, 09 SEP 2021 to 07 OCT 2021