

LOC/DME I-MKZ 109.9 Chan 36	APP CRS 071°	Rwy Idg 7R 11095 11259 7L 11259	TDZE 128 128	Apt Elev 128 128
--	------------------------	---	------------------------	----------------------------

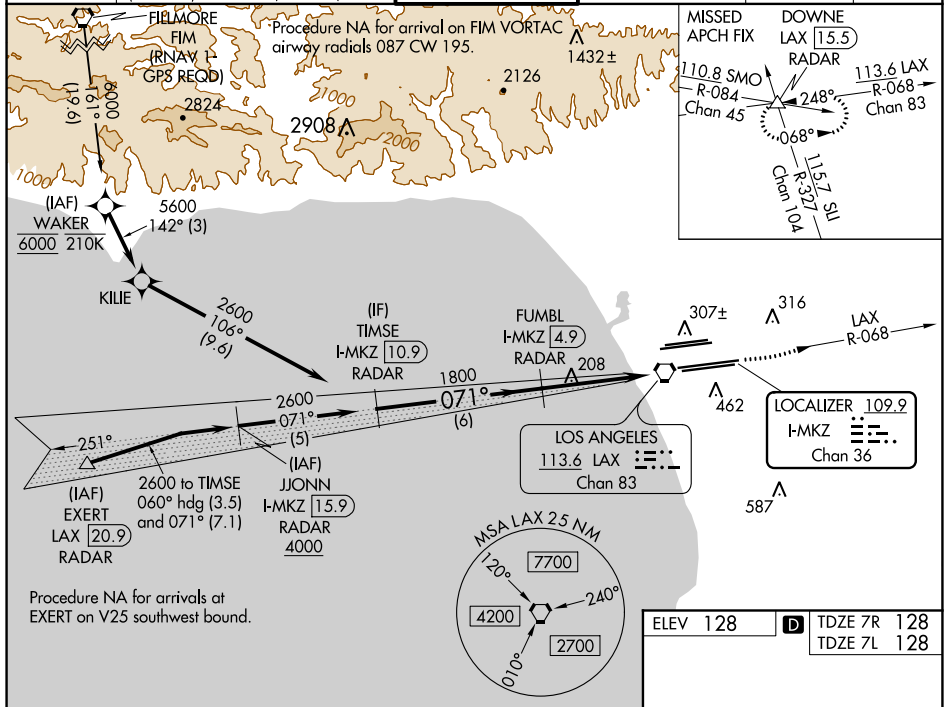
ILS or LOC RWY 7R

LOS ANGELES INTL (LAX)

Simultaneous approach authorized. DME or RADAR required. Inop table does not apply to Sidestep Rwy 7L Cats A and B. # RVR 1800 authorized with use of FD or AP or HUD to DA.

MALSR Rwy 7R	MALSR Rwy 7L	MISSED APPROACH: Climb to 3000 on LAX VORTAC R-068 to DOWNNE INT/ LAX 15.5 DME/RADAR and hold.
--------------	--------------	--

D-ATIS ARR 133.8 DEP 135.65	SOCAL APP CON 124.3 363.2 (225°-044°)	124.9 269.0 (090°-224°)	LOS ANGELES TOWER N 133.9 239.3 S 120.95 379.1	GND CON N 121.65 327.0 S 121.75 327.0 W 121.4 327.0	CLNC DEL 120.35 327.0	CPDLC
---	--	-----------------------------------	--	---	---	-------



CATEGORY	A		B		C		D	
	S-ILS 7R#		328/24		200 (200-½)			
	S-LOC 7R		460/24		332 (400-½)		460/26 332 (400-½)	
	SIDESTEP 7L		520/55		392 (400-1)		520-1½ 392 (400-1½)	

ELEV 128	TDZE 7R 128	TDZE 7L 128			
TDZ/CL Rwys 6R, 7L, 24R, and 25L HIRL all Rwys					
FAF to MAP 5.1 NM					
Knots	60	90	120	150	180
Min:Sec	5:06	3:24	2:33	2:02	1:42

SW-3, 09 SEP 2021 to 07 OCT 2021

SW-3, 09 SEP 2021 to 07 OCT 2021