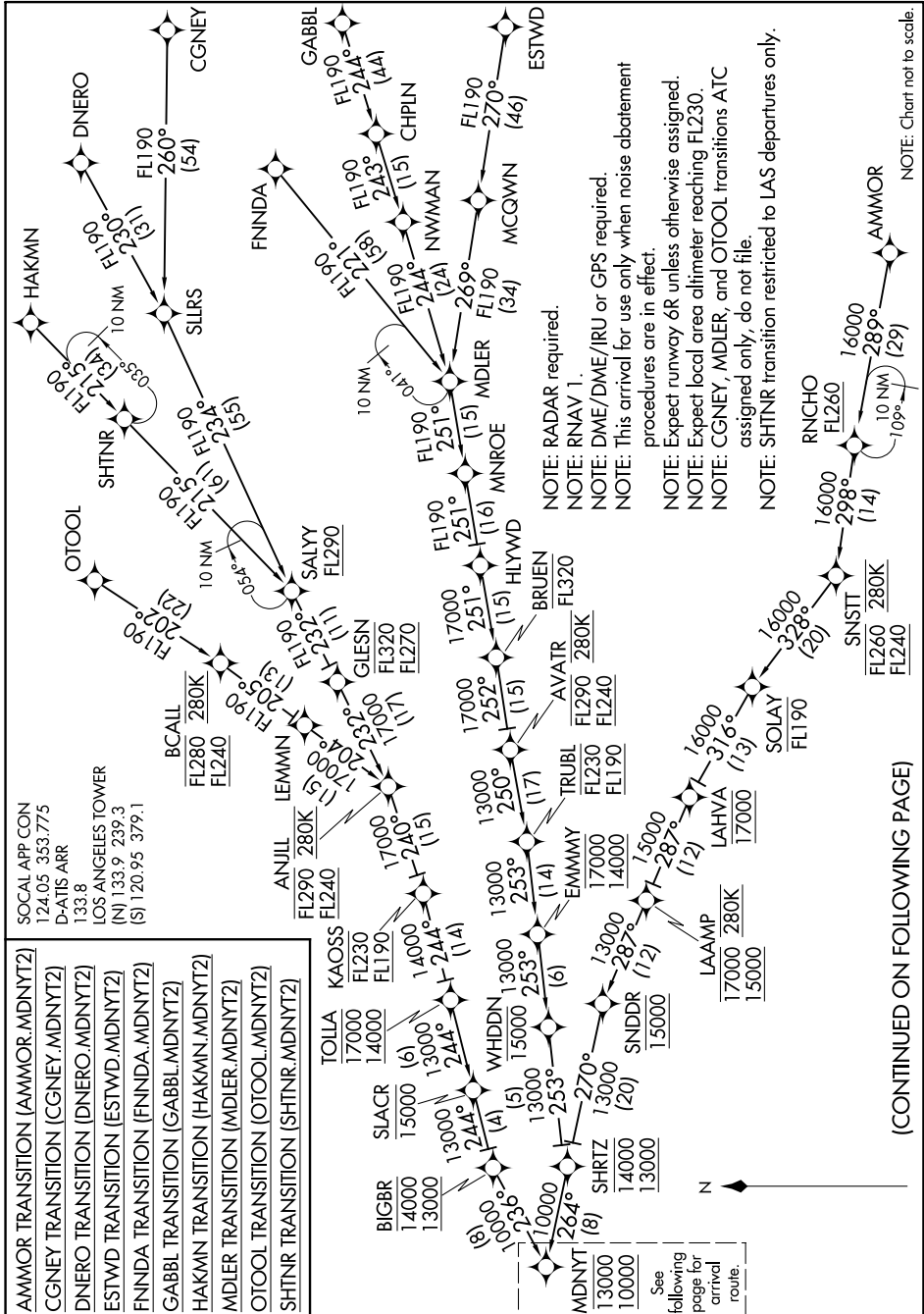


# MDNYT TWO ARRIVAL (RNAV) Transition Routes

SW-3, 09 SEP 2021 to 07 OCT 2021

- AMMOR TRANSITION (AMMOR.MDNYT2)
- CGNEY TRANSITION (CGNEY.MDNYT2)
- DNERO TRANSITION (DNERO.MDNYT2)
- ESTWD TRANSITION (ESTWD.MDNYT2)
- FNINDA TRANSITION (FNINDA.MDNYT2)
- GABBL TRANSITION (GABBL.MDNYT2)
- HAKMN TRANSITION (HAKMN.MDNYT2)
- MDLER TRANSITION (MDLER.MDNYT2)
- OTOOL TRANSITION (OTOOL.MDNYT2)
- SHTNR TRANSITION (SHTNR.MDNYT2)

SOCAL APP CON  
124.05 353.775  
D-ATIS ARR  
133.8  
LOS ANGELES TOWER  
(N) 133.9 239.3  
(S) 120.95 379.1



NOTE: RADAR required.  
NOTE: RNAV 1.  
NOTE: DME/DME/IRU or GPS required.  
NOTE: This arrival for use only when noise abatement procedures are in effect.  
NOTE: Expect runway 6R unless otherwise assigned.  
NOTE: Expect local area altimeter reaching FL230.  
NOTE: CGNEY, MDLER, and OTOOL transitions ATC assigned only, do not file.  
NOTE: SHTNR transition restricted to LAS departures only.

(CONTINUED ON FOLLOWING PAGE)

NOTE: Chart not to scale.

# MDNYT TWO ARRIVAL (RNAV) Transition Routes

SW-3, 09 SEP 2021 to 07 OCT 2021