

SW-3, 09 SEP 2021 to 07 OCT 2021

**TOP ALTITUDE:  
FL230**

**TAKEOFF MINIMUMS**

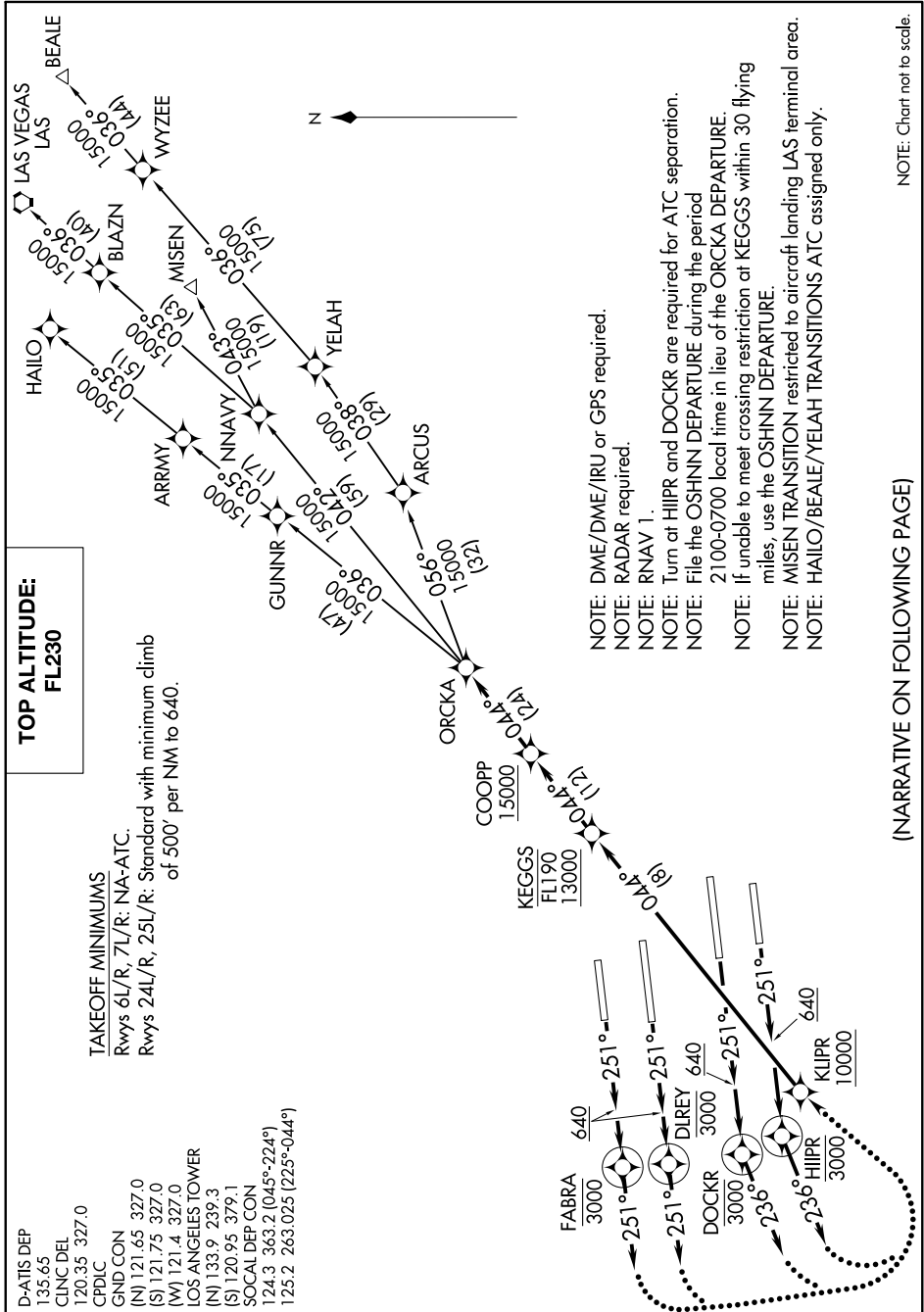
Rwys 6L/R, 7L/R: NA-ATC.

Rwys 24L/R, 25L/R: Standard with minimum climb of 500' per NM to 640.

- D-ATIS DEP 135.65
- CUNCDL 120.35 327.0
- CPDLC
- GND CON (N) 121.65 327.0
- (S) 121.75 327.0
- (W) 121.4 327.0
- LOS ANGELES TOWER (N) 133.9 239.3
- (S) 120.95 379.1
- SOCAL DEP CON 124.3 363.2 (045°-224°)
- 125.2 263.025 (225°-044°)

**ORCKA FIVE DEPARTURE (RNAV)**  
(ORCA5.ORCKA) 10SEP20

LOS ANGELES, CALIFORNIA  
LOS ANGELES INTL (LAX)



- NOTE: DME/DME/IRU or GPS required.
- NOTE: RADAR required.
- NOTE: RNAV 1.
- NOTE: Turn at HIIPR and DOCKR are required for ATC separation.
- NOTE: File the OSHNN DEPARTURE during the period 2100-0700 local time in lieu of the ORCKA DEPARTURE.
- NOTE: If unable to meet crossing restriction at KEGGS within 30 flying miles, use the OSHNN DEPARTURE.
- NOTE: MISEN TRANSITION restricted to aircraft landing LAS terminal area.
- NOTE: HAILLO/BEALE/YELAH TRANSITIONS ATC assigned only.

(NARRATIVE ON FOLLOWING PAGE)

NOTE: Chart not to scale.

SW-3, 09 SEP 2021 to 07 OCT 2021