


APP CRS <b>071°</b>	Rwy Idg <b>8566</b>
	TDZE <b>119</b>
	Apt Elev <b>128</b>

# RNAV (RNP) Z RWY 6L

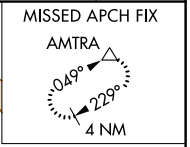
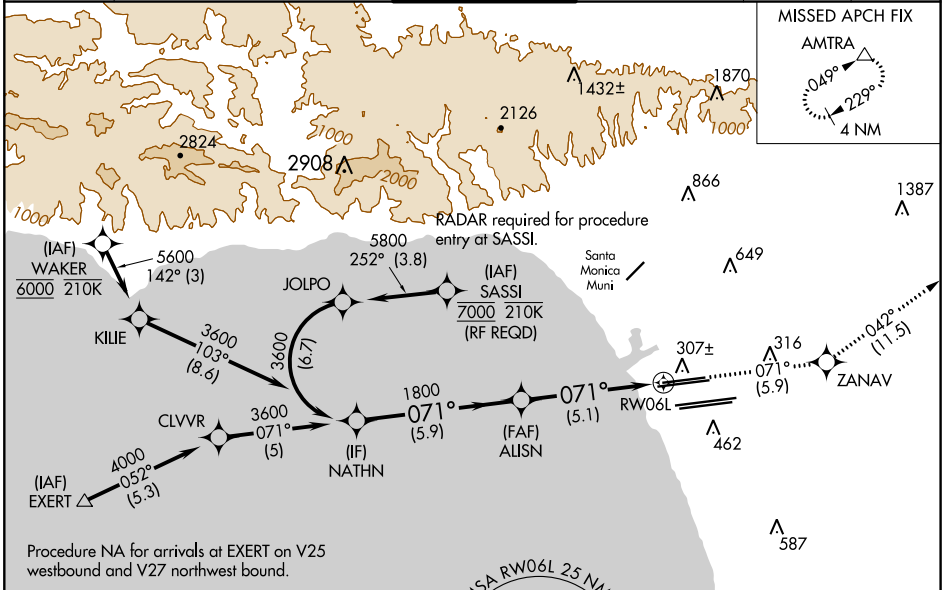
LOS ANGELES INTL (LAX)

**▽** For uncompensated Baro-VNAV systems, procedure NA below 5°C (41°F) or above 54°C (130°F). Simultaneous approach authorized. GPS required. For inop MALSR, increase RNP 0.30 all Cats visibility to RVR 6000.

**MALSR**  


**MISSED APPROACH:** Climb to 3000 on track 071° to ZANAV and on track 042° to AMTRA and hold.

D-ATIS ARR <b>133.8</b> DEP <b>135.65</b>	SOCAL APP CON <b>124.3 363.2</b> (APCH FM WEST) <b>124.9 269.0</b> (090°-224°) <b>124.5 235.975</b> (225°-044°) <b>128.5 360.7</b> (045°-089°)	LOS ANGELES TOWER <b>N 133.9 239.3</b> <b>S 120.95 379.1</b>	GND CON <b>N 121.65 327.0</b> <b>S 121.75 327.0</b> <b>W 121.4 327.0</b>	CLNC DEL <b>120.35</b> <b>327.0</b>	CPDLC
---	--	--	---	---	-------



SW-3, 09 SEP 2021 to 07 OCT 2021

SW-3, 09 SEP 2021 to 07 OCT 2021

