


WAAS CH 42504 W07A	APP CRS 071°	Rwy Idg 11259 TDZE 128 Apt Elev 128
--	------------------------	--

RNAV (GPS) Y RWY 7L

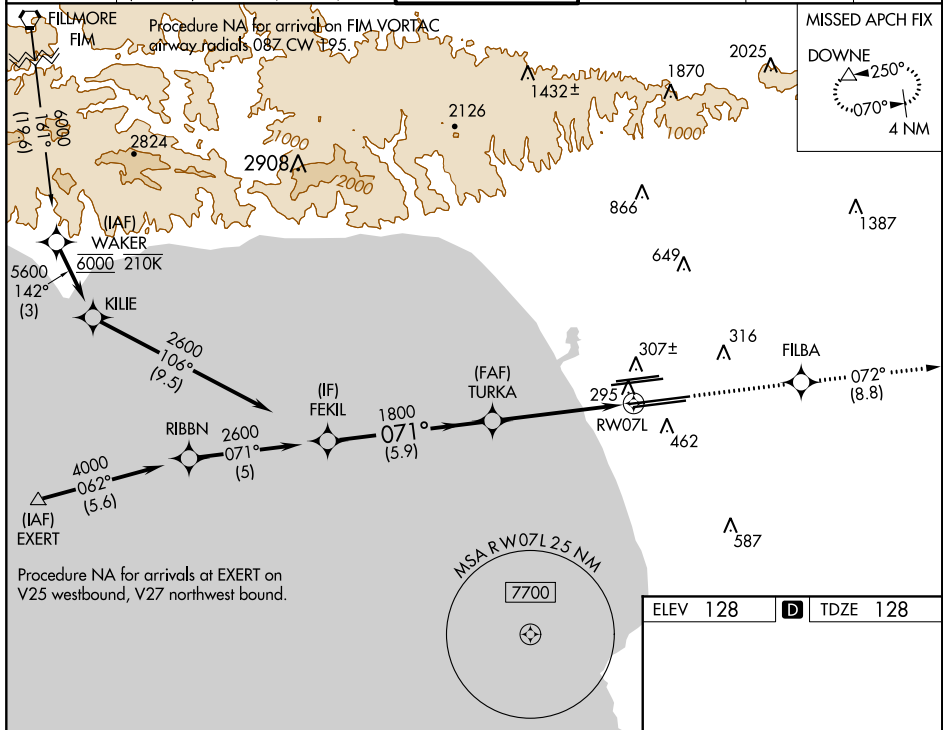
LOS ANGELES INTL (LAX)

▽ For uncompensated Baro-VNAV systems, LNAV/VNAV NA below 5°C (41°F) or above 54°C (130°F). DME/DME RNP -0.3 NA. LNAV procedure NA during simultaneous operations. Use of FD or AP providing RNAV track guidance required during simultaneous operations. Simultaneous approach authorized.

MALSR 

MISSED APPROACH: Climb to 3000 direct FILBA and on track 072° to DOWNE and hold.

D-ATIS ARR 133.8 DEP 135.65	SOCAL APP CON 124.3 363.2 (APCH FM WEST) 124.5 235.975 (225°-044°)	124.9 269.0 (090°-224°) 128.5 360.7 (045°-089°)	LOS ANGELES TOWER N 133.9 239.3 S 120.95 379.1	GND CON N 121.65 327.0 S 121.75 327.0 W 121.4 327.0	CLNC DEL 120.35 327.0	CPDLC
---	--	--	--	---	---	-------



VGSI and RNAV glidepath not coincident (VGSI Angle 3.00/TCH 83).

GP 3.00° TCH 59	FEKIL	TURKA	FILBA	DOWNE
	2600	1800	3000	tr 072°
	071°			△
	1800			
	5.9 NM	4 NM	1.1 NM	
CATEGORY	A	B	C	D
LPV DA		344/18	216 (300-½)	
LNAV/VNAV DA		464/30	336 (400-¾)	
LNAV MDA	560/24	432 (500-½)	560/40	432 (500-¾)

*1.1 NM to RW07L *LNAV only

ELEV 128	D	TDZE 128
----------	----------	----------

TDZ/CL Rwy 6R, 7L, 24R, and 25L
HIRL all Rwy's

SW-3, 09 SEP 2021 to 07 OCT 2021

SW-3, 09 SEP 2021 to 07 OCT 2021