

# TRTON TWO DEPARTURE (RNAV)

AL-237 (FAA)

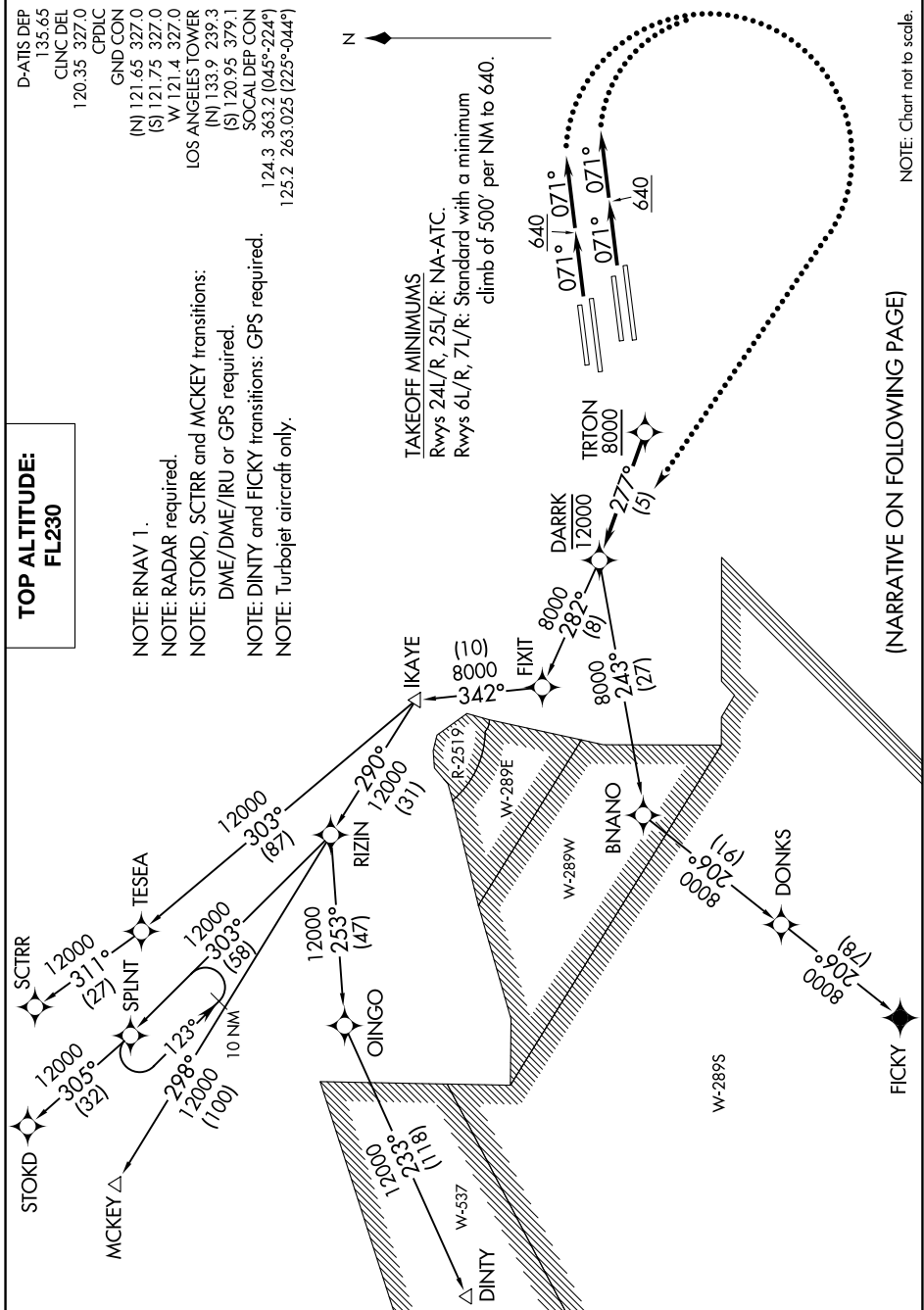
LOS ANGELES INTL (LAX)  
LOS ANGELES, CALIFORNIA

SW-3, 09 SEP 2021 to 07 OCT 2021

**TOP ALTITUDE:  
FL230**

D-AIS DEP 135.65  
 CLNC DEL 120.35 327.0  
 CPDLC  
 GND/CON (N) 121.65 327.0  
 (S) 121.75 327.0  
 W 121.4 327.0  
 LOS ANGELES TOWER (N) 133.9 239.3  
 SOCIAL DEP CON (S) 120.95 379.1  
 124.3 363.2 (045°-224°)  
 125.2 263.025 (225°-044°)

NOTE: RNAV 1.  
 NOTE: RADAR required.  
 NOTE: STOKD, SCTRR and MCKEY transitions:  
 DME/DME/IRU or GPS required.  
 NOTE: DINTY and FICKY transitions: GPS required.  
 NOTE: Turbopjet aircraft only.



(NARRATIVE ON FOLLOWING PAGE)

SW-3, 09 SEP 2021 to 07 OCT 2021

# TRTON TWO DEPARTURE (RNAV)