

(WNNDY3.WNNDY) 19003

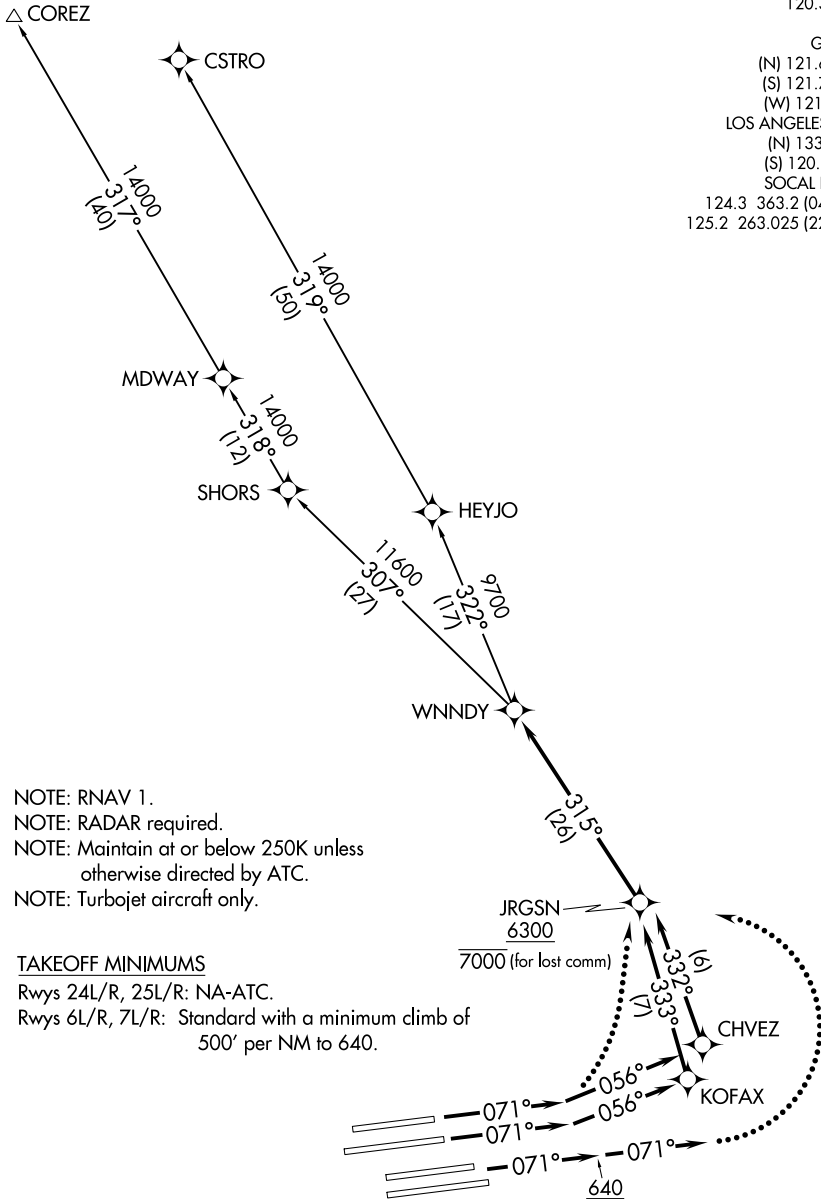
WNNDY THREE DEPARTURE (RNAV)

AL-237 (FAA)

LOS ANGELES INTL (LAX)
LOS ANGELES, CALIFORNIA

**TOP ALTITUDE:
FL230**

D-ATIS DEP	135.65
CLNC DEL	120.35 327.0
CPDLC	
GND CON	
(N) 121.65 327.0	
(S) 121.75 327.0	
(W) 121.4 327.0	
LOS ANGELES TOWER	
(N) 133.9 239.3	
(S) 120.95 379.1	
SOCAL DEP CON	
124.3 363.2 (045°-224°)	
125.2 263.025 (225°-044°)	



- NOTE: RNAV 1.
- NOTE: RADAR required.
- NOTE: Maintain at or below 250K unless otherwise directed by ATC.
- NOTE: Turbojet aircraft only.

TAKEOFF MINIMUMS

Rwys 24L/R, 25L/R: NA-ATC.
 Rwys 6L/R, 7L/R: Standard with a minimum climb of 500' per NM to 640.

(NARRATIVE ON FOLLOWING PAGE)

NOTE: Chart not to scale.

WNNDY THREE DEPARTURE (RNAV)

LOS ANGELES, CALIFORNIA
LOS ANGELES INTL (LAX)

(WNNDY3.WNNDY) 03JAN19

SW-3, 09 SEP 2021 to 07 OCT 2021

SW-3, 09 SEP 2021 to 07 OCT 2021