


WAAS CH 53609 W26A	APP CRS 259°	Rwy Idg TDZE Apt Elev	7815 548 565
--	------------------------	-----------------------------	---

RNAV (GPS) RWY 26

EASTERN WV RGNL/SHEPHERD FIELD (MRB)

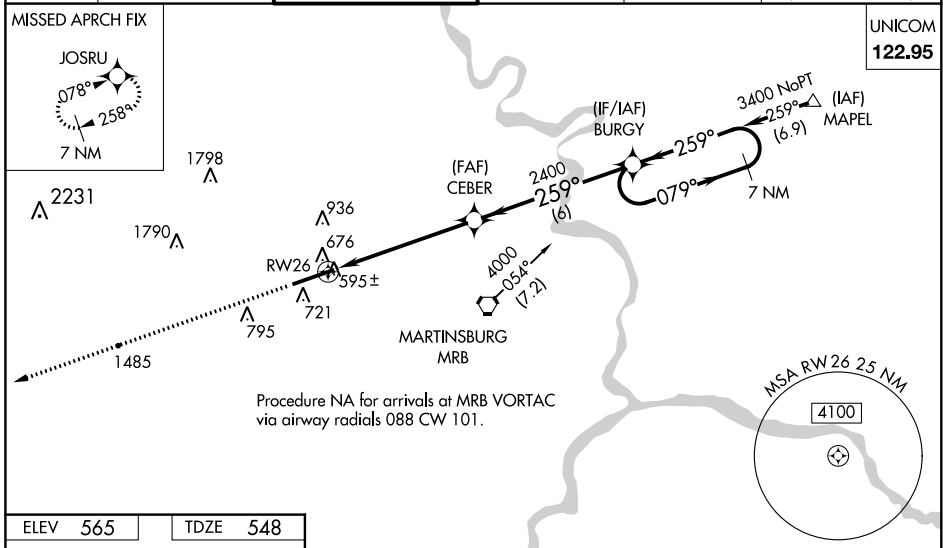
RNP APCH.

▼ Baro-VNAV NA when using Hagerstown altimeter setting. For uncompensated Baro-VNAV systems, LNAV/VNAV NA below -16°C (4°F) or above 54°C (130°F). VDP NA when using Hagerstown altimeter setting. When local altimeter setting not received, use Hagerstown altimeter setting and increase all DA 70 feet and all MDA 80 feet, increase LNAV/VNAV all Cats, LNAV Cats C, D, E and Circling Cat C and D visibility ¼ mile. For inoperative MALSR increase LPV Cat E visibility to ¾ mile, LNAV/VNAV Cat E to 2¼ mile, LNAV Cat E to 1½ mile. For inoperative MALSR when using Hagerstown altimeter setting increase LPV all Cats visibility to 1 mile, LNAV/VNAV Cat E visibility to 2½ mile and LNAV Cat E visibility to 1¾ mile.

MALSR 

MISSED APPROACH: Climb to 4100 direct JOSRU and hold, continue climb-in-hold to 4100.

ASOS 119.925	POTOMAC APP CON 126.825 239.025	MARTINSBURG TOWER ★ 124.3 (CTAF) 233.7	GND CON 121.8 257.65	CLNC DEL 121.8 257.65	CLNC DEL 132.075 269.075 (When twr closed)
------------------------	---	---	--------------------------------	---------------------------------	---




ELEV 565	TDZE 548
----------	----------


4100 JOSRU

* LNAV only.

1.2 4.4 NM 6 NM

GP 3.00° TCH 52

CATEGORY	A	B	C	D	E
LPV DA	798-½		250 (300-½)		
LNAV/VNAV DA	1213-1¾		665 (700-1¾)		
LNAV MDA	980-½	432 (500-½)	980-¾ 432 (500-¾)	980-1	432 (500-1)
 CIRCLING	1100-1 535 (600-1)	1240-1 675 (700-1)	1240-2 675 (700-2)	1260-2 ¼ 695 (700-2 ¼)	2140-3 1575 (1600-3)

HIRL Rwy 8-26 

NE-4, 09 SEP 2021 to 07 OCT 2021

NE-4, 09 SEP 2021 to 07 OCT 2021