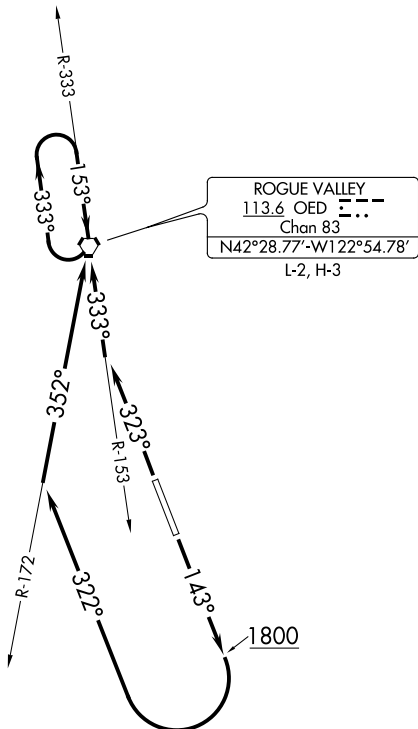


ATIS  
 127.25  
 GND CON  
 121.8  
 MEDFORD TOWER ★  
 119.4 (CTAF) 257.8  
 CASCADE DEP CON ★  
 124.3 379.9  
 SEATTLE CENTER  
 124.85 306.3



ROGUE VALLEY  
 113.6 OED  
 Chan 83  
 N42°28.77'-W122°54.78'  
 L-2, H-3

### TAKEOFF MINIMUMS

Rwy 14: Standard with a minimum climb of 435' per NM to 4700.  
 Rwy 32: Standard with a minimum climb of 300' per NM to 6800.

NOTE: Chart not to scale.

### DEPARTURE ROUTE DESCRIPTION

**TAKEOFF RUNWAY 14:** Climb on heading 143° to 1800, then climbing right turn heading 322° and OED VORTAC R-172 to OED VORTAC, thence. . . .

**TAKEOFF RUNWAY 32:** Climb on heading 323° to intercept the OED VORTAC R-153 to OED VORTAC, thence. . . .

. . . . continue climb-in-hold in OED VORTAC holding pattern to cross OED VORTAC at or above MEA/MCA for direction of flight before proceeding on course.

NW-1, 09 SEP 2021 to 07 OCT 2021

NW-1, 09 SEP 2021 to 07 OCT 2021