

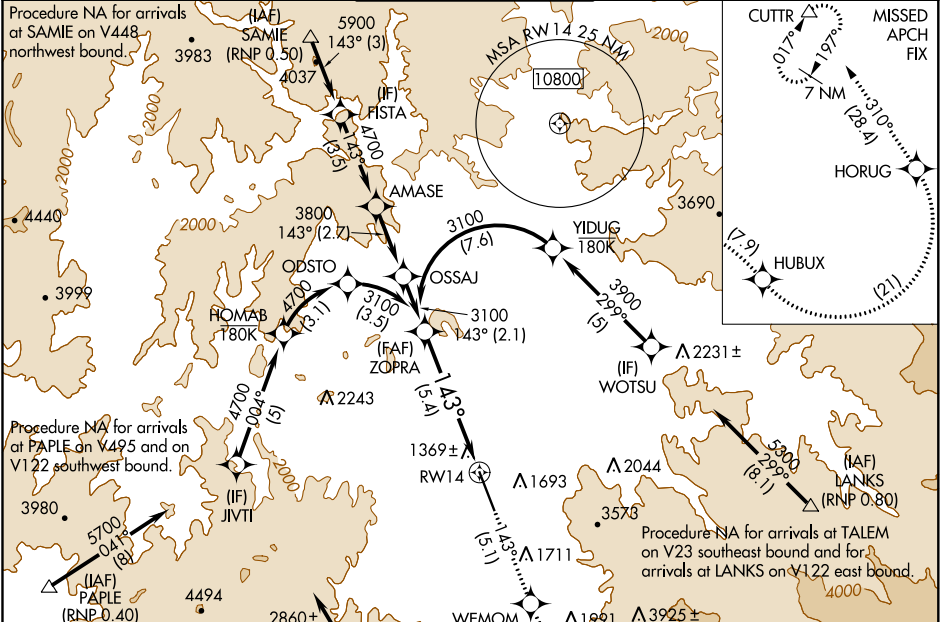
APP CRS 143°	Rwy Idg 8800
TDZE 1303	Apt Elev 1335

RNAV (RNP) Z RWY 14

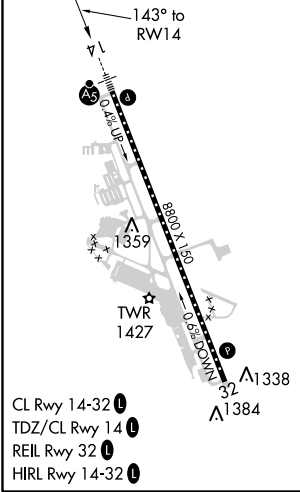
ROGUE VALLEY INTL-MEDFORD (MFR)

GPS required. RF required. For uncompensated Baro-VNAV systems, procedure NA below -8°C (17°F) or above 46°C (115°F). For inop MALSR, increase RNP 0.30 DA* all Cats visibility to RVR 6000, increase RNP 0.30 DA all Cats visibility to 3. * Missed approach requires minimum climb of 259 feet per NM to 8300.	MALSR 	MISSED APPROACH: Climb to 9000 on track 143° to WEMOM, left turn to CUDUB, right turn to HUBUX, left turn to HORUG, then on track 310° to CUTTR and hold.
	-3°C	

ATIS 127.25	CASCADE APP CON* 124.3 379.9	MEDFORD TOWER* 119.4 (CTAF) 0 257.8	GND CON 121.8	UNICOM 122.95
-----------------------	--	---	-------------------------	-------------------------



ELEV 1335	D TDZE 1303
-----------	--------------------



Procedure Turn NA	3100	9000	WEMOM	CUDUB
		tr 143°		
VGSi and RNAV glidepath not coincident (VGSi Angle 3.00/TCH 73)				
GP 3.00°				
TCH 58				
See planview for multiple IF locations.				
5.4 NM				

CATEGORY	A	B	C	D
RNP 0.30 DA*		1665/40	362 (400-¾)	
RNP 0.30 DA		2131-2½	828 (800-2½)	

AUTHORIZATION REQUIRED

NW-1, 09 SEP 2021 to 07 OCT 2021

NW-1, 09 SEP 2021 to 07 OCT 2021