

APP CRS	Rwy ldg	<b>8800</b>
<b>143°</b>	TDZE	<b>1303</b>
	Apt Elev	<b>1335</b>

# RNAV (GPS) Y RWY 14

ROGUE VALLEY INTL-MEDFORD (MFR)

RNP APCH.

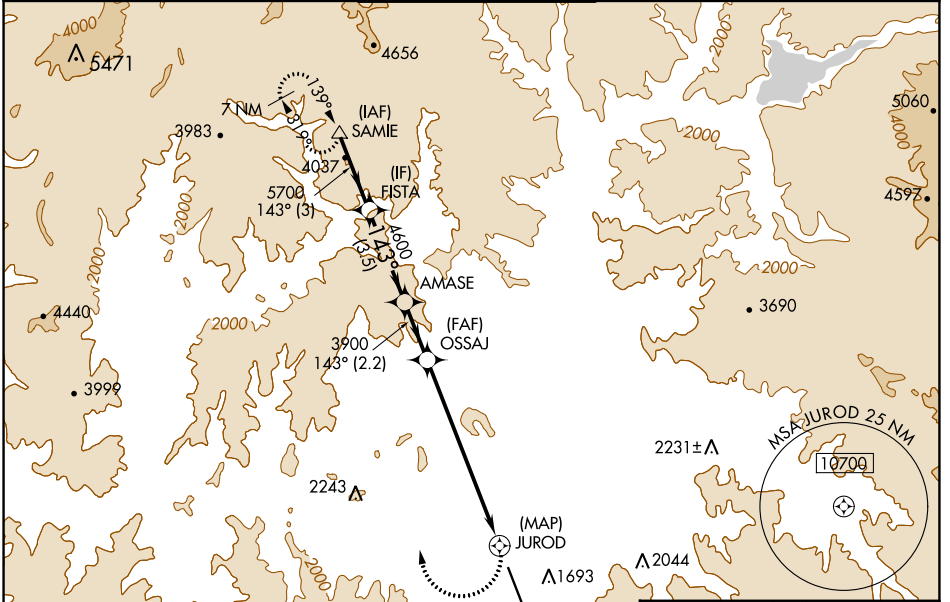
**⚠** When Medford altimeter setting not received, procedure NA. Inop table does not apply to Cats C and D.

**⚠** -3°C

**MALSR**

**⚠** MISSED APPROACH: Climbing right turn 7000 direct SAMIE and hold, continue climb-in-hold to 7000.  
\*Missed approach requires minimum climb of 334 feet per NM to 4800.

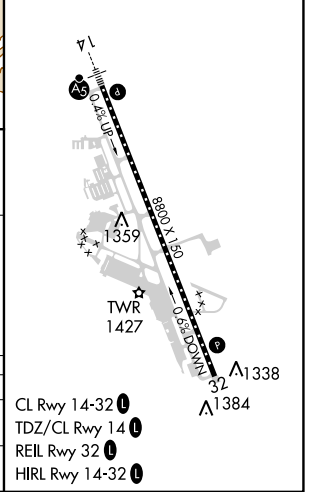
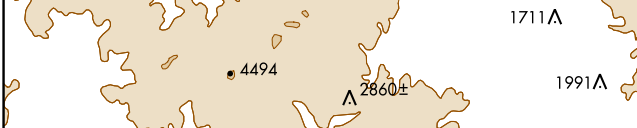
ATIS <b>127.25</b>	CASCADE APP CON * <b>124.3 379.9</b>	MEDFORD TOWER * <b>119.4 (CTAF) 257.8</b>	GND CON <b>121.8</b>	UNICOM <b>122.95</b>
-----------------------	---	--	-------------------------	-------------------------



NW-1, 09 SEP 2021 to 07 OCT 2021

NW-1, 09 SEP 2021 to 07 OCT 2021

ELEV 1335	<b>D</b> TDZE 1303
-----------	--------------------



VGSI and descent angles not coincident (VGSI Angle 3.00/TCH 73).

CATEGORY	A	B	C	D
LNAV MDA*	2600/40 1297 (1300-¾)	2600/55 1297 (1300-1)	2600-3 1297 (1300-3)	
LNAV MDA	2600/40 1297 (1300-¾)	2600/55 1297 (1300-1)	3320-3 2017 (2000-3)	3460-3 2157 (2200-3)

CL Rwy 14-32	<b>⚠</b>
TDZ/CL Rwy 14	<b>⚠</b>
REIL Rwy 32	<b>⚠</b>
HIRL Rwy 14-32	<b>⚠</b>