

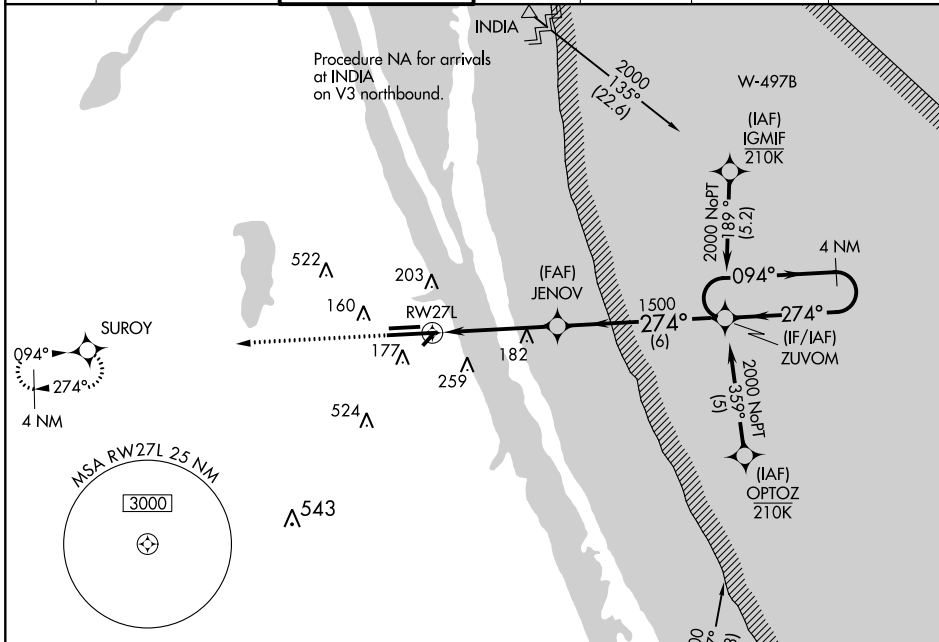
WAAS CH <b>56201</b> <b>W27B</b>	APP CRS <b>274°</b>	Rwy Idg TDZE Apt Elev	<b>9482</b> <b>26</b> <b>33</b>
--	------------------------	-----------------------------	---------------------------------------

# RNAV (GPS) RWY 27L

MELBOURNE ORLANDO INTL (MLB)

RNP APCH.		MISSED APPROACH: Climb to 2000 direct SUROY and hold.			
▼ For uncompensated Baro-VNAV systems, LNAV/VNAV NA below -15°C (5°F) or above 54°F (130°F).					

ATIS <b>132.55</b>	ORLANDO APP CON <b>132.65 281.425</b>	MELBOURNE TOWER ★ <b>118.2 (CTAF) 257.8</b>	GND CON <b>121.9</b>	CLNC DEL <b>121.9</b>	CLNC DEL <b>132.65</b> (When twr closed)	UNICOM <b>122.95</b>
-----------------------	--	--	-------------------------	--------------------------	--	-------------------------

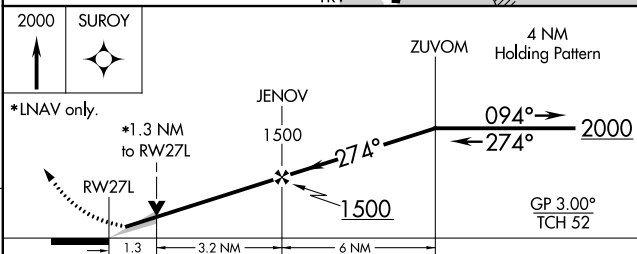
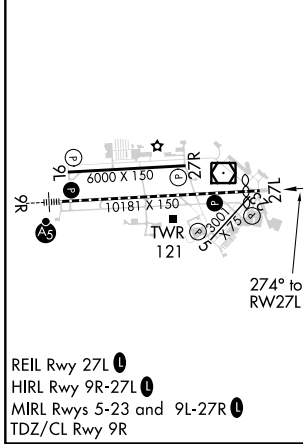


SE-3, 09 SEP 2021 to 07 OCT 2021

SE-3, 09 SEP 2021 to 07 OCT 2021

ELEV 33	<b>D</b>	TDZE 26
---------	----------	---------

Procedure NA for arrivals on TRV VORTAC airway radials 325 CW 350.



CATEGORY	A	B	C	D
LPV DA		226- <sup>3</sup> / <sub>4</sub>	200 (200- <sup>3</sup> / <sub>4</sub> )	
LNAV/VNAV DA		318- <sup>7</sup> / <sub>8</sub>	292 (300- <sup>7</sup> / <sub>8</sub> )	
LNAV MDA	500-1	474 (500-1)	500-1 <sup>3</sup> / <sub>8</sub>	474 (500-1 <sup>3</sup> / <sub>8</sub> )
<b>C</b> CIRCLING	500-1 467 (500-1)	560-1 527 (600-1)	680-1 <sup>3</sup> / <sub>4</sub> 647 (700-1 <sup>3</sup> / <sub>4</sub> )	880-2 <sup>3</sup> / <sub>4</sub> 847 (900-2 <sup>3</sup> / <sub>4</sub> )