

WAAS CH <b>50101</b> <b>W27A</b>	APP CRS <b>274°</b>	Rwy Idg TDZE Apt Elev	<b>6000</b> <b>32</b> <b>33</b>
--	------------------------	-----------------------------	---------------------------------------

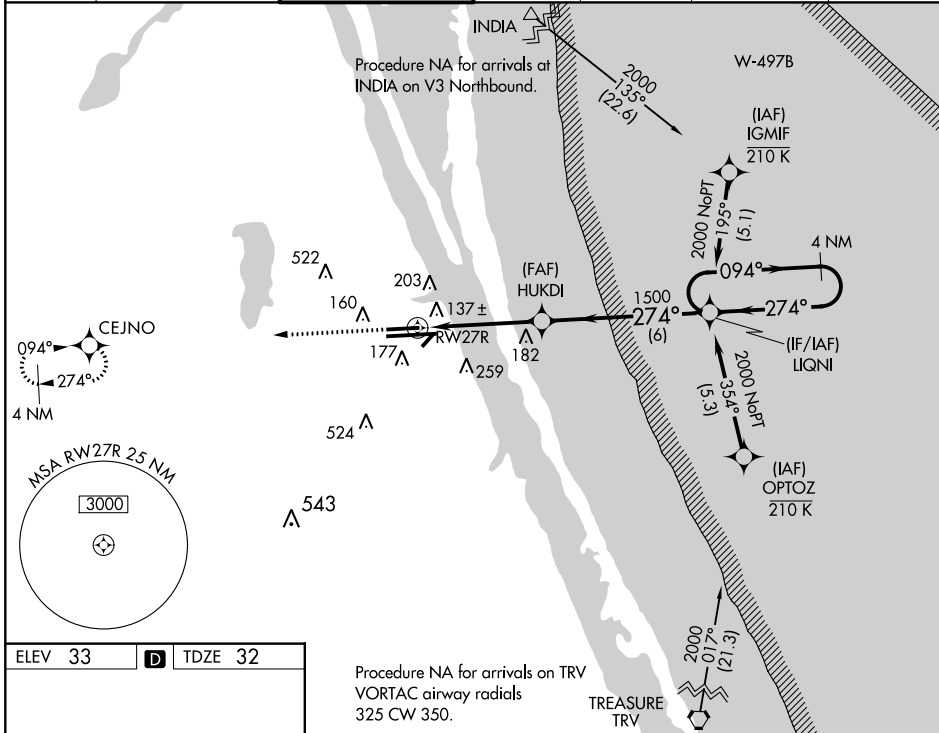
# RNAV (GPS) RWY 27R

MELBOURNE ORLANDO INTL (MLB)

RNP APCH.  
 ⚠ For uncompensated Baro-VNAV systems, LNAV/VNAV NA below -15°C (5°F) or above 54°C (130°F).

MISSED APPROACH: Climb to 2000 direct CEJNO and hold.

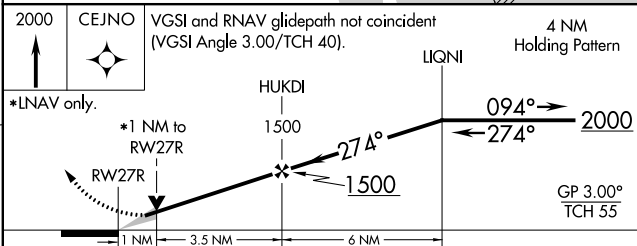
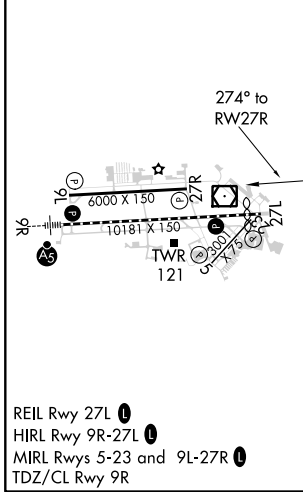
ATIS <b>132.55</b>	ORLANDO APP CON <b>132.65 281.425</b>	MELBOURNE TOWER ★ <b>118.2 (CTAF) 257.8</b>	GND CON <b>121.9</b>	CLNC DEL <b>121.9</b>	CLNC DEL <b>132.65</b> (When twr closed)	UNICOM <b>122.95</b>
-----------------------	--	--	-------------------------	--------------------------	--	-------------------------



SE-3, 09 SEP 2021 to 07 OCT 2021

SE-3, 09 SEP 2021 to 07 OCT 2021

ELEV 33	<b>D</b>	TDZE 32
---------	----------	---------



CATEGORY	A	B	C	D
LPV DA		232-3/4	200 (200-3/4)	
LNAV/VNAV DA		443-13/8	411 (500-13/8)	
LNAV MDA		400-1	368 (400-1)	
<b>C</b> CIRCLING	500-1 467 (500-1)	560-1 527 (600-1)	680-13/4 647 (700-13/4)	880-23/4 847 (900-23/4)