

WAAS CH <b>65601</b> <b>W09A</b>	APP CRS <b>094°</b>	Rwy Idg TDZE <b>33</b> Apt Elev <b>33</b>	<b>6000</b>
--	------------------------	---	-------------

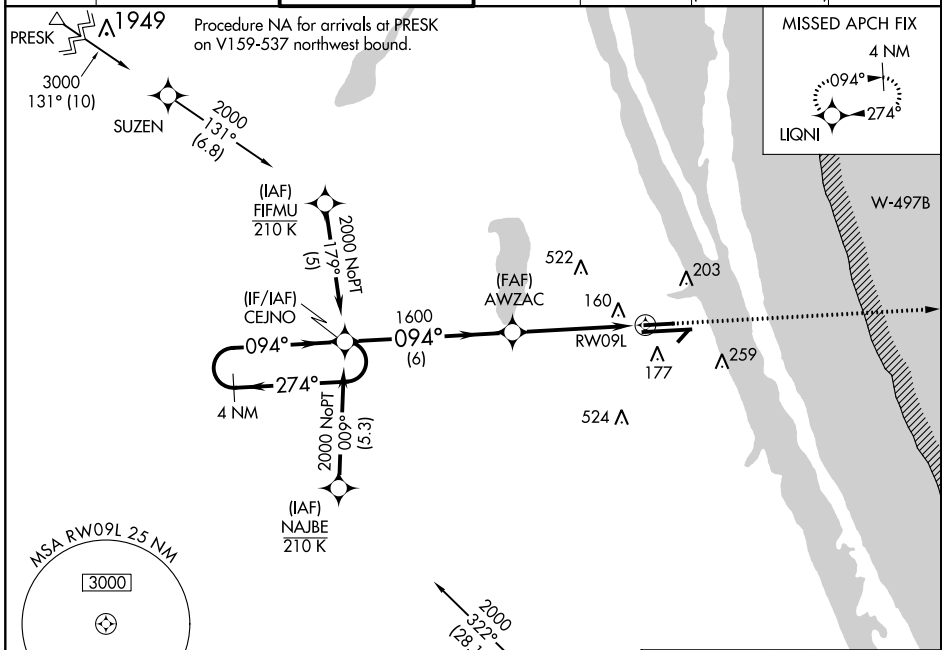
# RNAV (GPS) RWY 9L

MELBOURNE ORLANDO INTL (MLB)

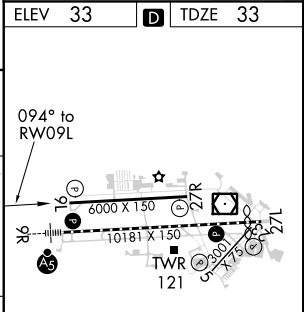
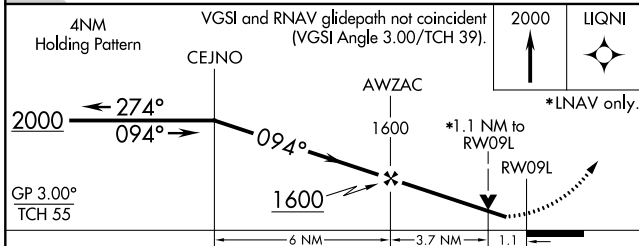
RNP APCH.  
 For uncompensated Baro-VNAV systems, LNAV/VNAV NA below -1.5°C (5°F) or above 54°C (130°F). Helicopter visibility reduction below ¾ SM NA.

MISSED APPROACH: Climb to 2000 direct LIQNI and hold.

ATIS <b>132.55</b>	ORLANDO APP CON <b>132.65 281.425</b>	MELBOURNE TOWER ★ <b>118.2</b> (CTAF) <b>257.8</b>	GND CON <b>121.9</b>	CLNC DEL <b>121.9</b>	CLNC DEL <b>132.65</b> (When twr closed)	UNICOM <b>122.95</b>
-----------------------	--	---	-------------------------	--------------------------	--	-------------------------



ELEV 33	TDZE 33
---------	---------



CATEGORY	A	B	C	D
LPV DA		283-¾	250 (300-¾)	
LNAV/VNAV DA		467-1⅜	434 (500-1⅜)	
LNAV MDA	420-1	387 (400-1)	420-1⅛	387 (400-1⅛)
CIRCLING	500-1 467 (500-1)	560-1 527 (600-1)	680-1¾ 647 (700-1¾)	880-2¾ 847 (900-2¾)

SE-3, 09 SEP 2021 to 07 OCT 2021

SE-3, 09 SEP 2021 to 07 OCT 2021