

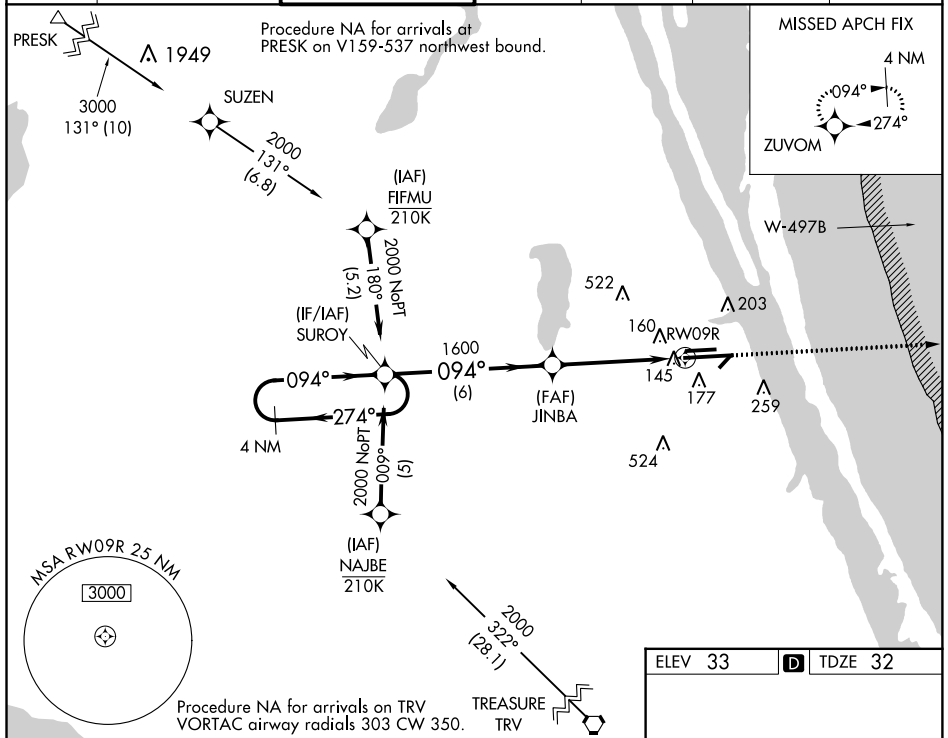
WAAS CH 60901 W09B	APP CRS 094°	Rwy Idg 10181 TDZE 32 Apt Elev 33
--	------------------------	--

RNAV (GPS) RWY 9R

MELBOURNE ORLANDO INTL (MLB)

RNP APCH.		MALSR		MISSED APPROACH: Climb to 2000 direct ZUVOM and hold.	
For uncompensated Baro-VNAV systems, LNAV/VNAV NA below -15°C or above 54°C.		MALSR			

ATIS 132.55	ORLANDO APP CON 132.65 281.425	MELBOURNE TOWER * 118.2 (CTAF) 257.8	GND CON 121.9	CLNC DEL 121.9	CLNC DEL 132.65 (When twr closed)	UNICOM 122.95
-----------------------	--	--	-------------------------	--------------------------	--	-------------------------



SE-3, 09 SEP 2021 to 07 OCT 2021

SE-3, 09 SEP 2021 to 07 OCT 2021

4 NM Holding Pattern		VGSI and RNAV glidepath not coincident (VGSI Angle 3.00/TCH 83).		2000 ZUVOM	
SUROY		JINBA 1600		*LNAV only.	
2000 ← 274°		094° →		*1 NM to RW09R	
GP 3.00° TCH 55		1600		RW09R	
6 NM		3.8 NM		1 NM	
CATEGORY	A	B	C	D	
LPV DA	232/18		200 (200-½)		
LNAV/VNAV DA	427/40		395 (400-¾)		
LNAV MDA	420/24 388 (400-½)		420/35 388 (400-⅝)		
CIRCLING	500-1 467 (500-1)	560-1 527 (600-1)	680-1¾ 647 (700-1¾)	880-2¾ 847 (900-2¾)	