

WAAS CH 77924 W22A	APP CRS 223°	Rwy Idg 5680 TDZE 2628 Apt Elev 2630
--	------------------------	---

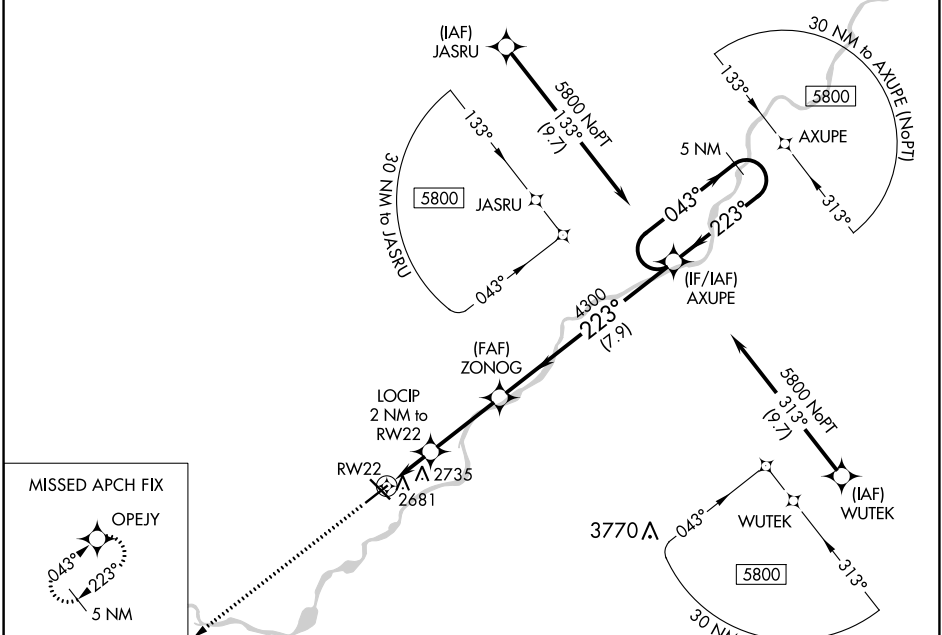
RNAV (GPS) RWY 22

FRANK WILEY FLD (MLS)

▼ For uncompensated Baro-VNAV systems, LNAV/VNAV NA below -24°C (-11°F) or above 54°C (130°F). Baro-VNAV and VDP NA when using Forsyth altimeter setting. DME/DME RNP-0.3 NA.
▲ When local altimeter setting not received, use Forsyth altimeter setting; increase LPV DA to 2966 and LNAV/VNAV DA to 2980 and all visibilities 1/8 mile. Increase all MDA 100 feet and LNAV Cat C and D visibility 3/8 mile and Circling Cat D 1/4 mile.

MISSED APPROACH:
 Climb to 6000 direct OPEJY and hold, continue climb-in-hold to 6000.

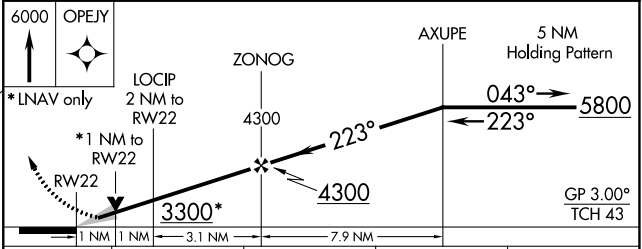
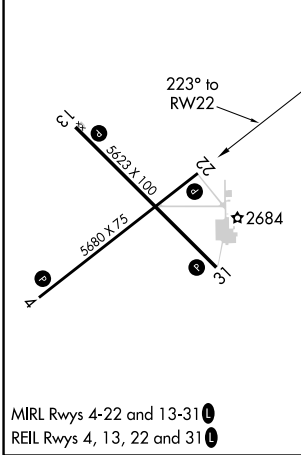
ASOS 135.575	SALT LAKE CENTER 126.85 305.2	UNICOM 123.0 (CTAF)
------------------------	---	-------------------------------



NW-1, 09 SEP 2021 to 07 OCT 2021

NW-1, 09 SEP 2021 to 07 OCT 2021

ELEV 2630	D	TDZE 2628
-----------	----------	-----------



CATEGORY	A	B	C	D
LPV DA		2878-1	250 (300-1)	
LNAV/VNAV DA		2892-1	264 (300-1)	
LNAV MDA		3000-1	372 (400-1)	
C CIRCLING	3060-1 430 (500-1)	3100-1 470 (500-1)	3120-1½ 490 (500-1½)	3320-2¼ 690 (700-2¼)