

WAAS CH 42600 W04A	APP CRS 043°	Rwy Idg 5680 TDZE 2629 Apt Elev 2630
--	------------------------	---

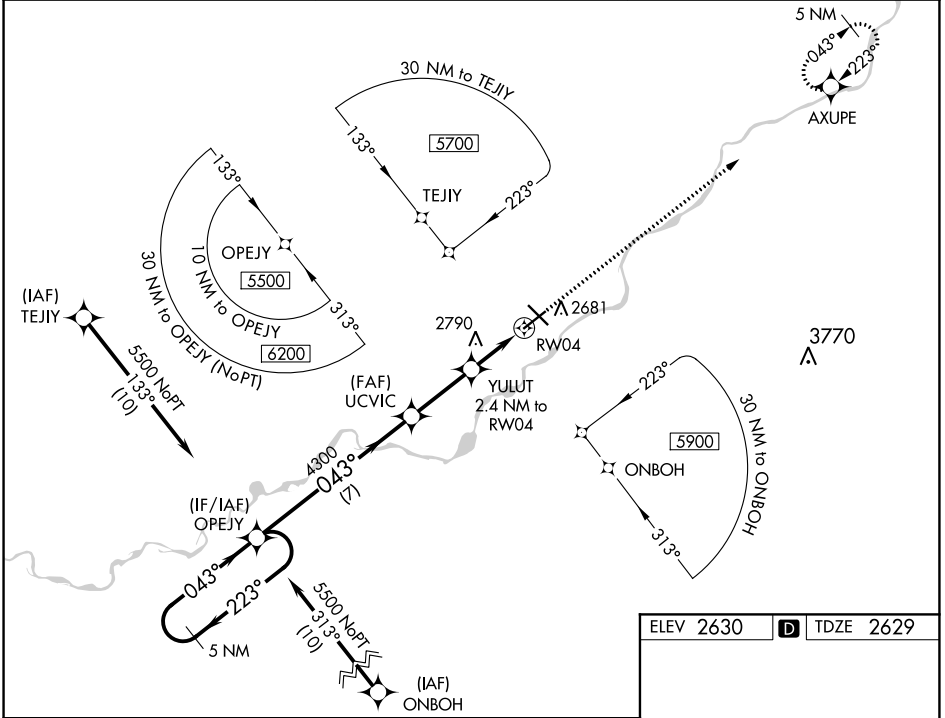
RNAV (GPS) RWY 4

FRANK WILEY FLD (MLS)

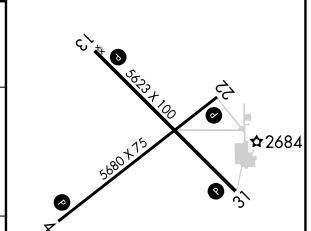
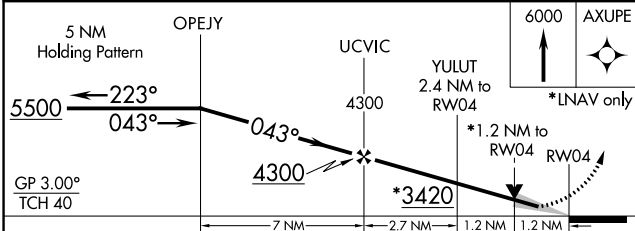
⚠ For uncompensated Baro-VNAV systems, LNAV/VNAV NA below -25°C (-13°F) or above 54°C (130°F). Baro-VNAV and VDP NA when using Forsyth altimeter setting. DME/DME RNP -0.3 NA. When local altimeter setting not received, use Forsyth altimeter setting: increase LPV and LNAV/VNAV DA to 2967 and all visibility 1/8 mile. Increase all MDA 100 feet and all Cat C and D visibility 1/4 mile.

MISSED APPROACH: Climb to 6000 direct AXUPE and hold, continue climb-in-hold to 6000.

ASOS 135.575	SALT LAKE CENTER 126.85 305.2	UNICOM 123.0 (CTAF)
------------------------	---	-------------------------------



ELEV 2630	D TDZE 2629
-----------	--------------------



CATEGORY	A	B	C	D
LPV DA		2879-1	250 (300-1)	
LNAV/VNAV DA		2879-1	250 (300-1)	
LNAV MDA	3040-1	411 (500-1)	3040-1 1/8	411 (500-1 1/8)
C CIRCLING	3060-1 430 (500-1)	3100-1 470 (500-1)	3120-1 1/2 490 (500-1 1/2)	3320-2 1/4 690 (700-2 1/4)

MIRL Rwy 4-22 and 13-31 **⓪**
REIL Rwy 4, 13, 22 and 31 **⓪**

NW-1, 09 SEP 2021 to 07 OCT 2021

NW-1, 09 SEP 2021 to 07 OCT 2021