

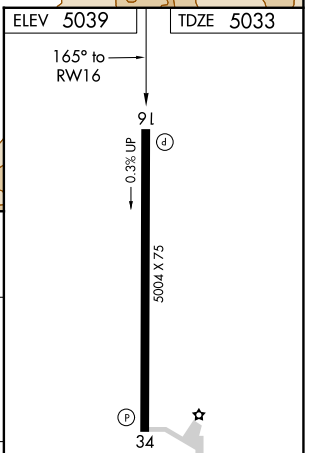
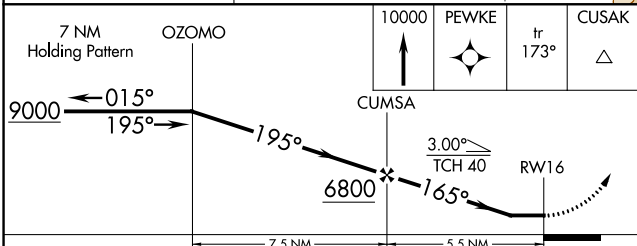
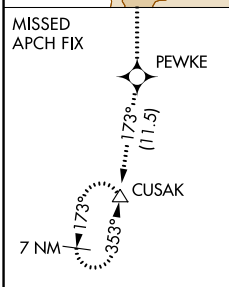
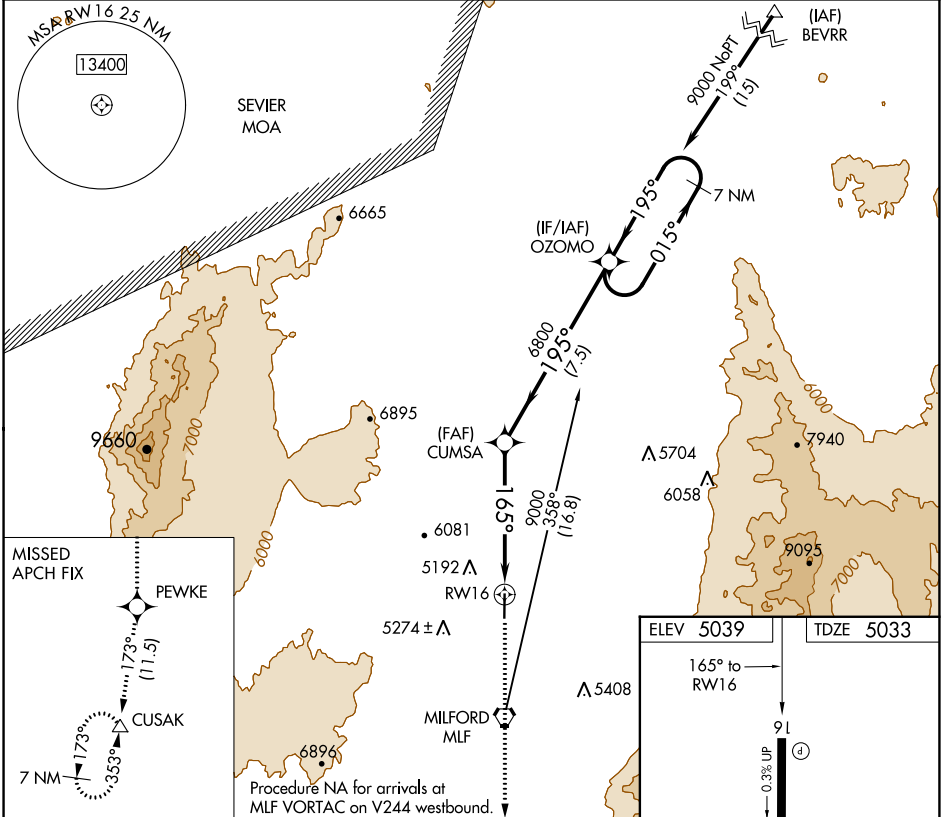
APP CRS	Rwy Idg	<b>5004</b>
<b>165°</b>	TDZE	<b>5033</b>
	Apt Elev	<b>5039</b>

# RNAV (GPS) RWY 16

MILFORD MUNI/BEN AND JUDY BRISCOE FLD (MLF)

RNP APCH.	MISSED APPROACH: Climb to 10000 direct PEWKE and on track 173° to CUSAK and hold.
<p>When local altimeter setting not received, use Cedar City altimeter setting and increase all MDA 200 feet and increase LNAV Cat C/D visibility ½ mile.</p> <p>-27°C</p>	

ASOS <b>135.025</b>	SALT LAKE CENTER <b>125.575 379.275</b>	UNICOM <b>122.8 (CTAF)</b>
------------------------	--	-------------------------------



CATEGORY	A	B	C	D
LNAV MDA	5480-1	447 (500-1)	5480-1 3/8	447 (500-1 3/8)

MIRL Rwy 16-34  
REIL Rwy 16 and 34

SW-4, 09 SEP 2021 to 07 OCT 2021

SW-4, 09 SEP 2021 to 07 OCT 2021