


LOC I-MOB <b>109.9</b>	APP CRS <b>145°</b>	Rwy Idg TDZE Apt Elev	<b>8502</b> <b>215</b> <b>219</b>
---------------------------	------------------------	-----------------------------	---

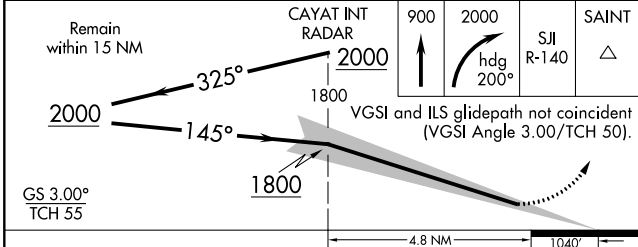
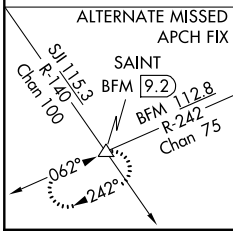
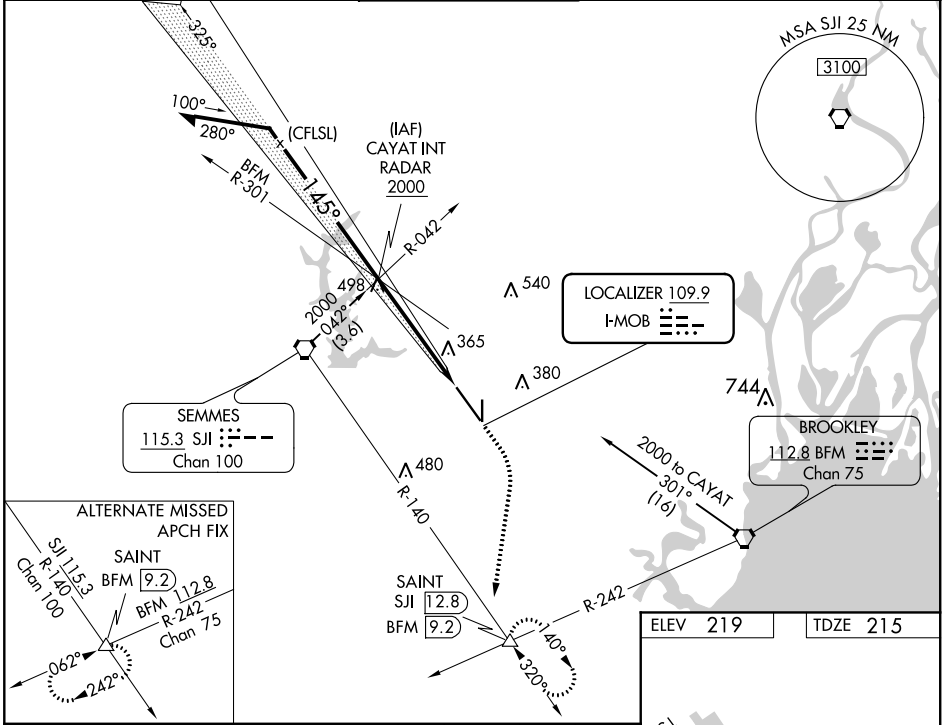
# ILS RWY 15 (SA CAT I & II)

MOBILE RGNL (MOB)

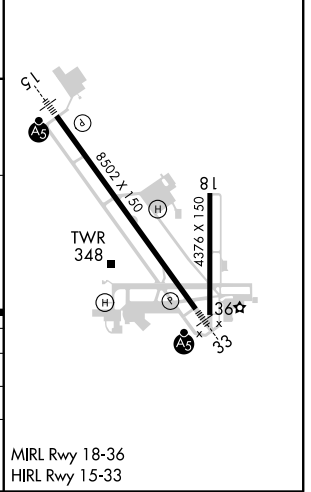
Procedure NA when tower closed.  
 SA CAT I: Requires specific OPSPEC, MSPEC, or LOA approval and use of HUD to DH.  
 ASR SA CAT II: Reduced Lighting: Requires specific OPSPEC, MSPEC, or LOA approval and use of autoland or HUD to touchdown.

MALSR   
 MISSED APPROACH: Climb to 900 then climbing right turn to 2000 on heading 200° then on SJJ VORTAC R-140 to SAINT/SJJ 12.8 DME and hold.

ATIS <b>124.75 257.85</b>	MOBILE APP CON ★ <b>118.5 269.3</b>	MOBILE TOWER ★ <b>118.3 (CTAF) 239.0</b>	GND CON <b>121.9 348.6</b>	CLNC DEL <b>119.85</b>	UNICOM <b>122.95</b>
------------------------------	--	---	-------------------------------	---------------------------	-------------------------



ELEV 219	TDZE 215
----------	----------



CATEGORY	A	B	C	D
S-ILS 15	SA CAT I	RA 171/12	150 DA 365	
S-ILS 15	SA CAT II	RA 109/12	100 DA 315	

**SA CATEGORY I & II ILS - SPECIAL AIRCREW & AIRCRAFT CERTIFICATION REQUIRED**

SE-4, 09 SEP 2021 to 07 OCT 2021

SE-4, 09 SEP 2021 to 07 OCT 2021