

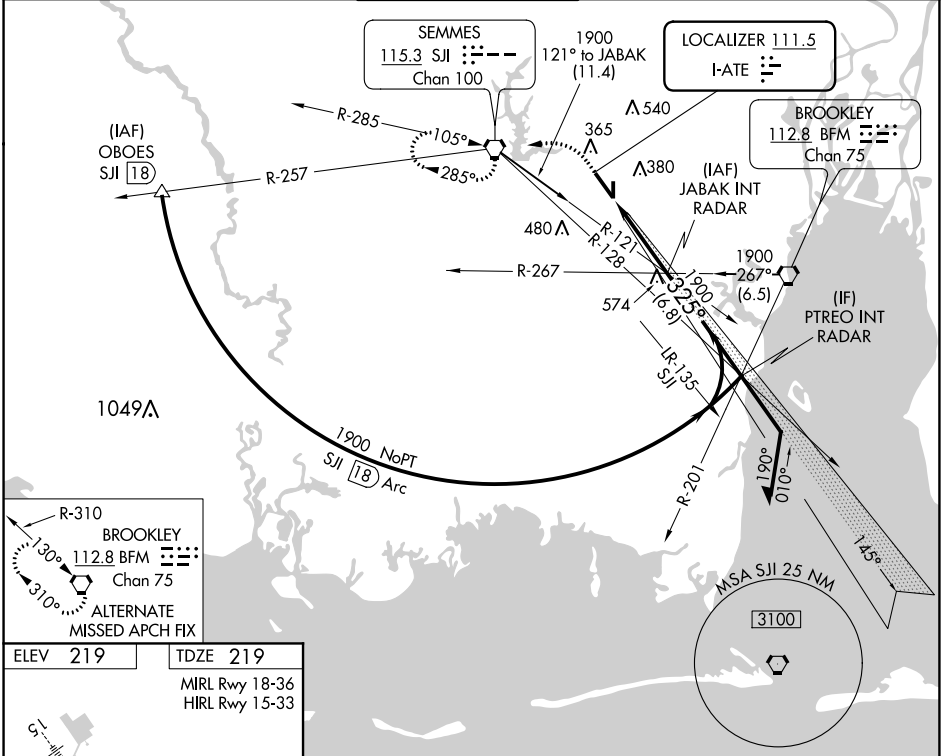
LOC I-ATE 111.5	APP CRS 325°	Rwy Idg 8502
		TDZE 219
		Apt Elev 219

ILS or LOC RWY 33

MOBILE RGNL (MOB)

**RVR 1800 authorized with use of FD or AP or HUD to DA. MALSR	MISSED APPROACH: Climb to 700 then climbing left turn to 2000 direct SJI VORTAC and hold.
-------------------------------------------------------------------	-------------------------------------------------------------------------------------------

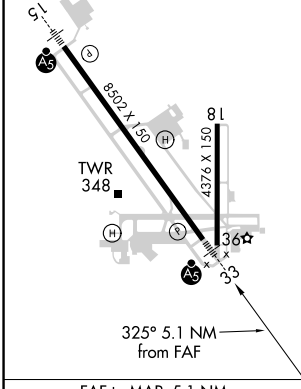
ATIS 124.75 257.85	MOBILE APP CON * 118.5 269.3	MOBILE TOWER * 118.3 (CTAF) 239.0	GND CON 121.9 348.6	CLNC DEL 119.85	UNICOM 122.95
------------------------------	----------------------------------------	---------------------------------------------	-------------------------------	---------------------------	-------------------------



R-310
BROOKLEY
112.8 BFM
Chan 75

ALTERNATE MISSED APCH FIX

ELEV 219	TDZE 219
MIRL Rwy 18-36	
HIRL Rwy 15-33	



700 2000 SJI

JABAK INT RADAR Remain within 10 NM

VGSI and ILS glidepath not coincident (VGSI Angle 3.00/TCH 50).

1900 145° 1900 325° 1900

GS 3.00° TCH 57

5.1 NM

CATEGORY	A	B	C	D
S-ILS 33**	419/24 200 (200-½)			
S-LOC 33	660/24	441 (500-½)	660/45	441 (500-¾)
<input checked="" type="checkbox"/> CIRCLING	680-1	461 (500-1)	740-1½ 521 (600-1½)	780-2 561 (600-2)

SE-4, 09 SEP 2021 to 07 OCT 2021

SE-4, 09 SEP 2021 to 07 OCT 2021