

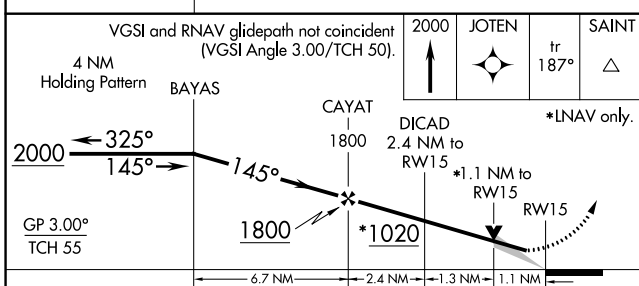
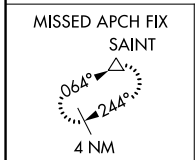
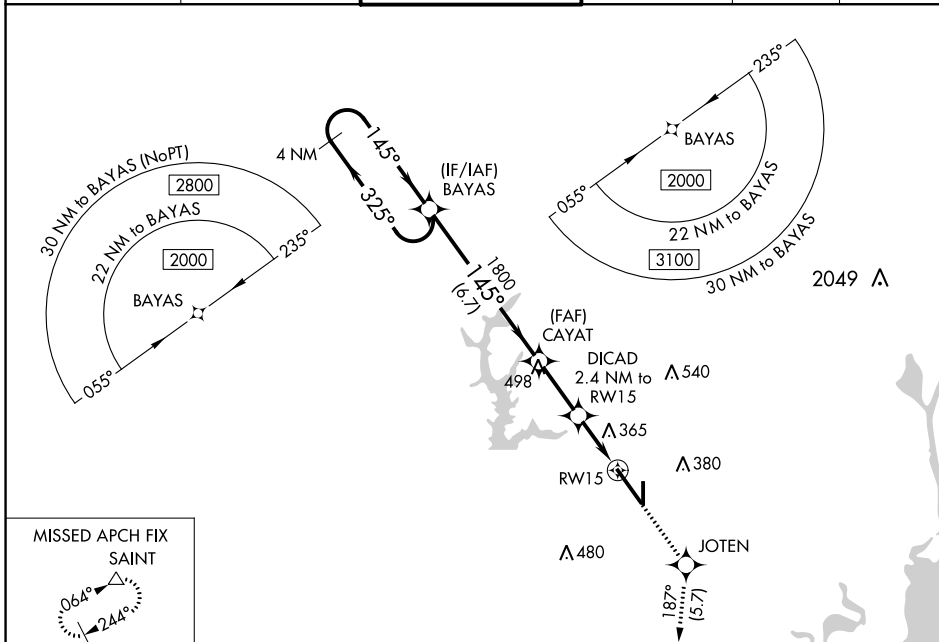
WAAS CH 97506 W15A	APP CRS 145°	Rwy Idg TDZE 215 Apt Elev 219
--	------------------------	---

RNAV (GPS) RWY 15

MOBILE RGNL (MOB)

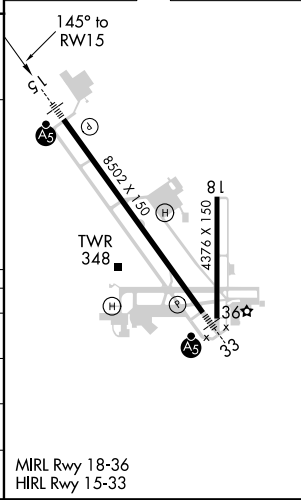
<p>ASR</p> <p>For uncompensated Baro-VNAV systems, LNAV/VNAV NA below -4°C (25°F) or above 42°C (107°F). DME/DME RNP-0.3 NA. For inop MALS, increase LNAV Cats C/D visibility to RVR 6000. ** RVR 1800 authorized with use of FD or AP or HUD to DA.</p>	<p>MALS</p>	<p>MISSED APPROACH: Climb to 2000 direct JOTEN and on track 187° to SAINT and hold.</p>
---	--------------------	--

<p>ATIS 124.75 257.85</p>	<p>MOBILE APP CON ★ 118.5 269.3</p>	<p>MOBILE TOWER ★ 118.3 (CTAF) 239.0</p>	<p>GND CON 121.9 348.6</p>	<p>CLNC DEL 119.85</p>	<p>UNICOM 122.95</p>
--------------------------------------	--	---	---------------------------------------	-----------------------------------	---------------------------------



ELEV 219	TDZE 215
-----------------	-----------------

CATEGORY	A	B	C	D
LPV DA**		415/24	200 (200-½)	
LNAV/VNAV DA		636/45	421 (500-¾)	
LNAV MDA		620/40	405 (500-¾)	
C CIRCLING	680-1	461 (500-1)	740-1½ 521 (600-1½)	780-2 561 (600-2)



SE-4, 09 SEP 2021 to 07 OCT 2021

SE-4, 09 SEP 2021 to 07 OCT 2021