

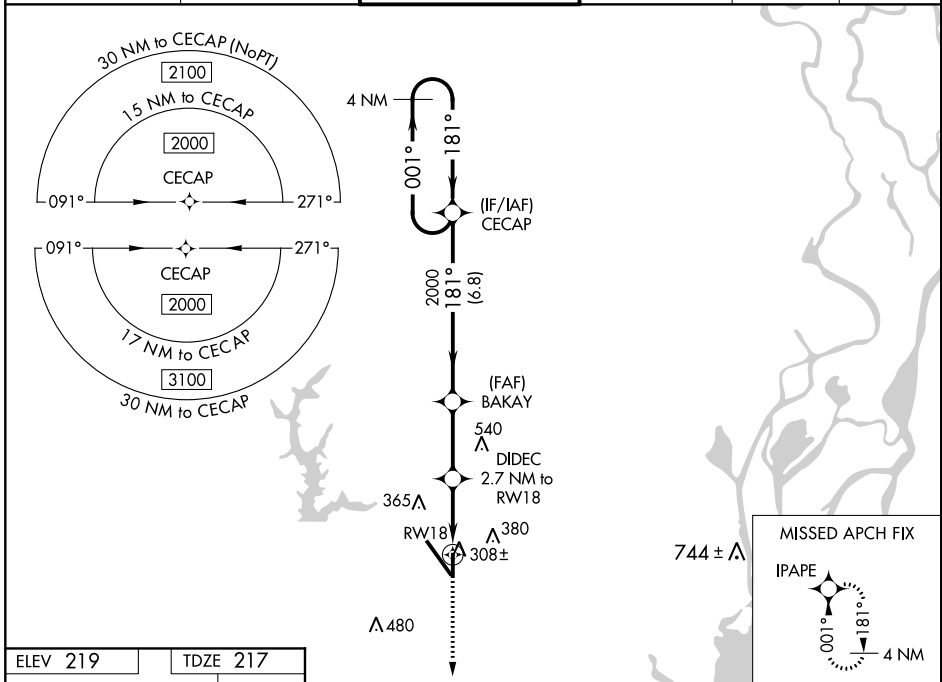
WAAS CH 78128 W18A	APP CRS 181°	Rwy Idg TDZE Apt Elev	4376 217 219
--	------------------------	-----------------------------	---

RNAV (GPS) RWY 18

MOBILE RGNL (MOB)

RNP APCH.	MISSED APPROACH: Climb to 2000 direct IPAPE and hold.
▼ For uncompensated Baro-VNAV systems, LNAV/VNAV NA below -4°C (25°F) ASR or above 42°C (107°F). Rwy 18 helicopter visibility reduction below ¼ SM NA.	

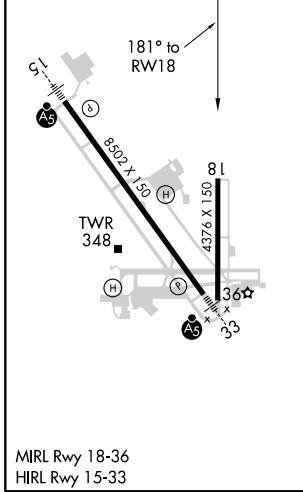
ATIS 124.75 257.85	MOBILE APP CON ★ 118.5 269.3	MOBILE TOWER ★ 118.3 (CTAF) 239.0	GND CON 121.9 348.6	CLNC DEL 119.85	UNICOM 122.95
------------------------------	--	---	-------------------------------	---------------------------	-------------------------



SE-4, 09 SEP 2021 to 07 OCT 2021

SE-4, 09 SEP 2021 to 07 OCT 2021

ELEV 219	TDZE 217
----------	----------



2000	IPAPE	BAKAY	CECAP	4 NM Holding Pattern
*LNAV only.	DIDEC 2.7 NM to RWY 18	2000	181°	001°
*1.3 NM to RWY 18	*1120	2000	181°	GP 3.00° TCH 45
1.3	1.4 NM	2.8 NM	6.8 NM	
CATEGORY	A	B	C	D
LPV DA	508-1		291 (300-1)	
LNAV/VNAV DA	624-1 3/8		407 (500-1 3/8)	
LNAV MDA	640-1	423 (500-1)	640-1 1/4	423 (500-1 1/4)
C CIRCLING	680-1	461 (500-1)	740-1 1/2	780-2
			521 (600-1 1/2)	561 (600-2)