

WAAS CH 69306 W33A	APP CRS 325°	Rwy Idg 8502 TDZE 219 Apt Elev 219
--	------------------------	---

RNAV (GPS) RWY 33

MOBILE RGNL (MOB)

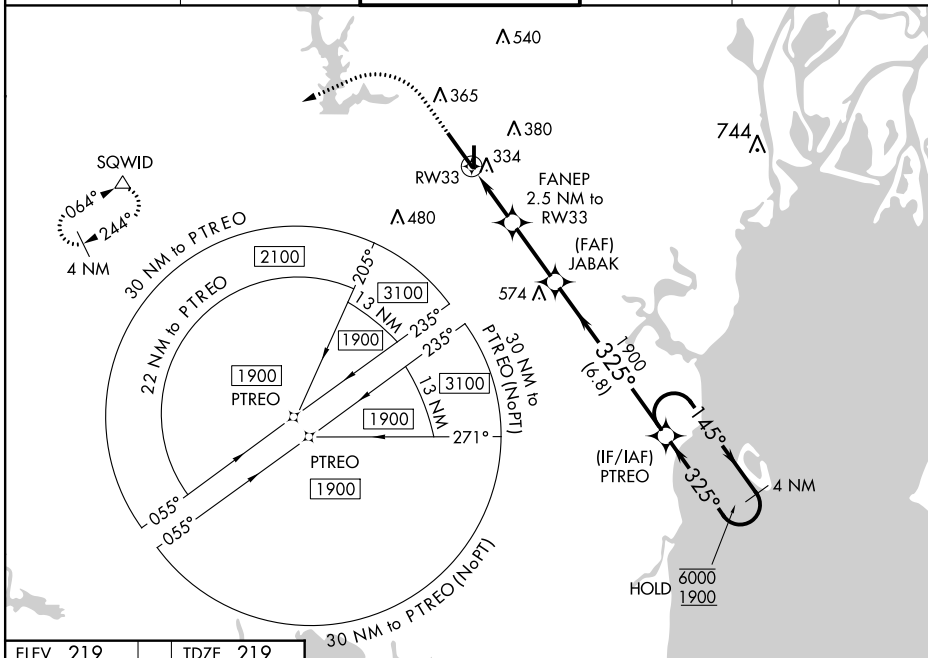
RNP APCH.

▼ For uncompensated Baro-VNAV systems, LNAV/VNAV NA below -4°C or above 54°C. For inop ALS, increase LNAV/VNAV all Cats visibility to RVR 4500.
ASR **RVR 1800 authorized with use of FD or AP or HUD to DA.



MISSED APPROACH: Climb to 700 then climbing left turn to 2000 direct SQWID and hold.

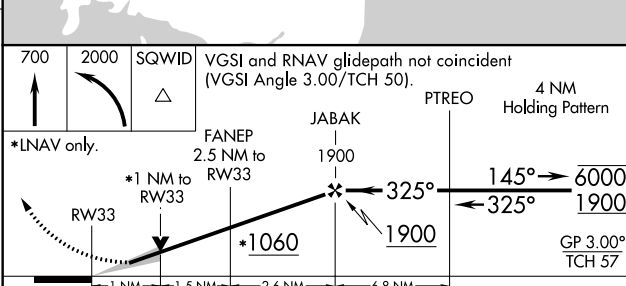
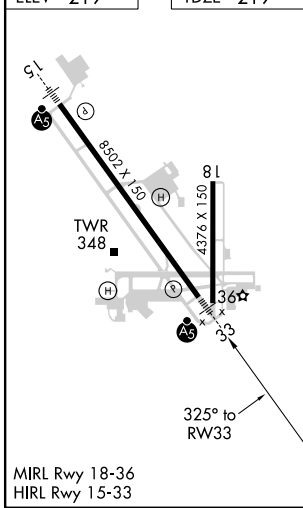
ATIS 124.75 257.85	MOBILE APP CON * 118.5 269.3	MOBILE TOWER * 118.3 (CTAF) 239.0	GND CON 121.9 348.6	CLNC DEL 119.85	UNICOM 122.95
------------------------------	--	---	-------------------------------	---------------------------	-------------------------



SE-4, 09 SEP 2021 to 07 OCT 2021

SE-4, 09 SEP 2021 to 07 OCT 2021

ELEV 219	TDZE 219
----------	----------



CATEGORY	A	B	C	D
LPV DA**		419/24	200 (200-½)	
LNAV/VNAV DA		505/24	286 (300-½)	
LNAV MDA	600/24	381 (400-½)	600/35	381 (400-¾)
<input checked="" type="checkbox"/> CIRCLING	680-1	461 (500-1)	740-1½ 521 (600-1½)	780-2 561 (600-2)