

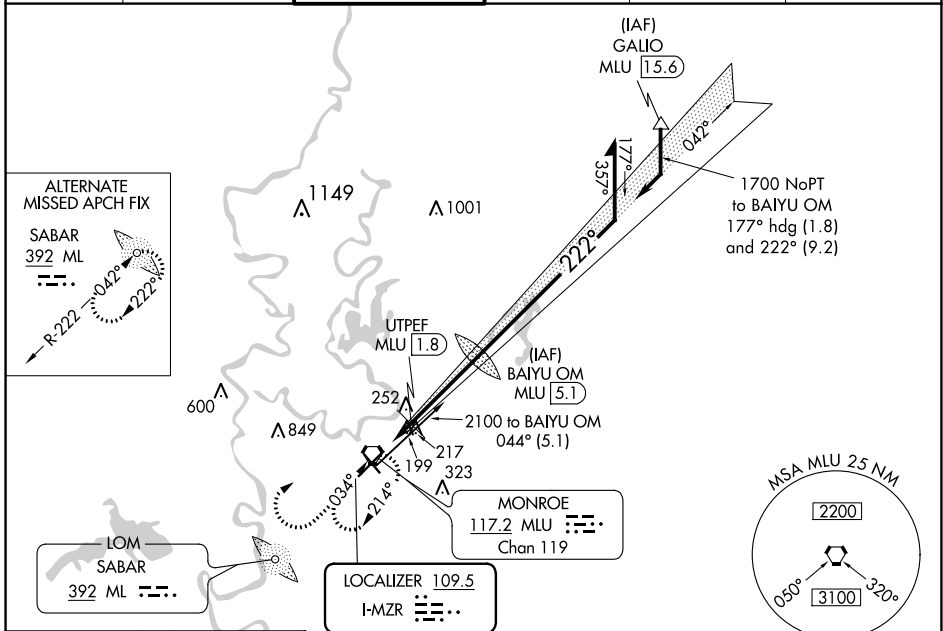
LOC I-MZR <b>109.5</b>	APP CRS <b>222°</b>	Rwy Idg TDZE Apt Elev	<b>7504</b> <b>78</b> <b>79</b>
---------------------------	------------------------	-----------------------------	---------------------------------------

# ILS or LOC RWY 22

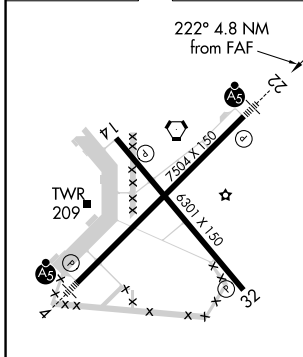
MONROE RGNL (MLU)

DME or RADAR required for procedure entry.		MALSR 	MISSED APPROACH: Climb to 1800 then climbing right turn to 3000 direct MLU VORTAC and hold, continue climb-in-hold to 3000.	
 Circling Rwy 14 NA at night. For inop ALS, increase S-LOC 22 Cat C/D visibility to 1 3/8 SM. # DME from MLU VORTAC.				

ATIS <b>125.05</b>	MONROE APP CON ★ <b>118.15 290.475</b>	MONROE TOWER ★ <b>118.9 (CTAF) 257.8</b>	GND CON <b>121.9</b>	CLNC DEL <b>121.65</b>	UNICOM <b>122.95</b>
-----------------------	---	---	-------------------------	---------------------------	-------------------------



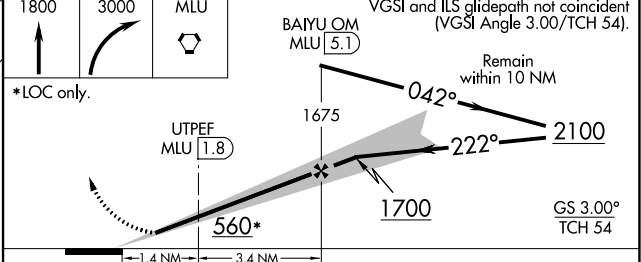
ELEV 79	<b>D</b> TDZE 78
---------	------------------



REIL Rws 14 and 32  
MIRL Rwy 14-32  
HIRL Rwy 4-22

FAF to MAP 4.8 NM

Knots	60	90	120	150	180
Min:Sec	4:48	3:12	2:24	1:55	1:36



CATEGORY	A	B	C	D
S-ILS 22	278-1/2 200 (200-1/2)			
S-LOC 22	560-1/2	482 (500-1/2)	560-1	482 (500-1)
<b>C</b> CIRCLING	580-1	501 (600-1)	740-1 3/4 661 (700-1 3/4)	1160-3 1081 (1100-3)
# UTEPF FIX MINIMUMS				
S-LOC 22	500-1/2	422 (500-1/2)	500-3/4	422 (500-3/4)
<b>C</b> CIRCLING	580-1	501 (600-1)	740-1 3/4 661 (700-1 3/4)	1160-3 1081 (1100-3)

SC-4, 09 SEP 2021 to 07 OCT 2021

SC-4, 09 SEP 2021 to 07 OCT 2021