

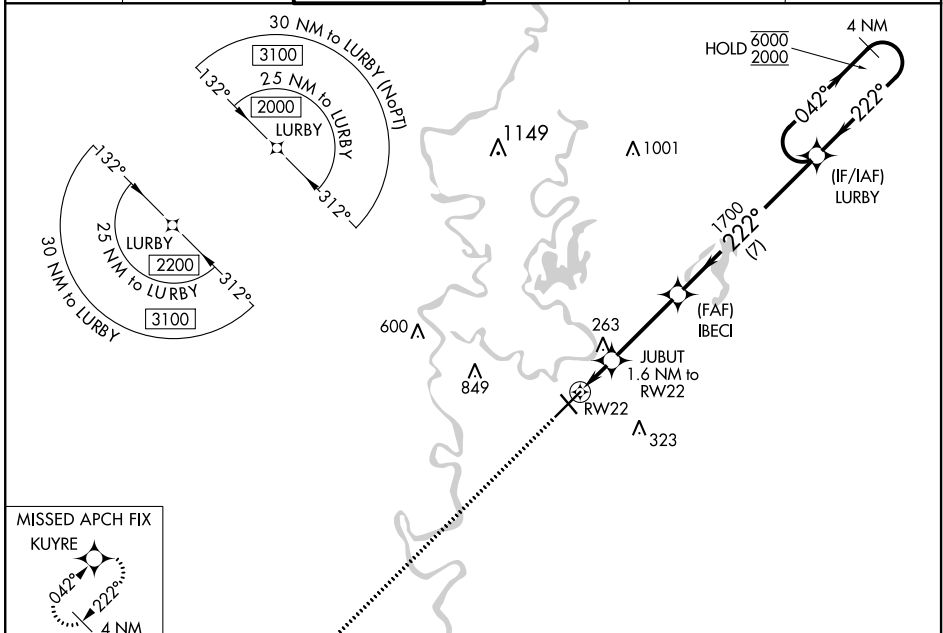
WAAS CH <b>70510</b> <b>W22A</b>	APP CRS <b>222°</b>	Rwy Idg TDZE <b>78</b> Apt Elev <b>79</b>
--	------------------------	---

# RNAV (GPS) RWY 22

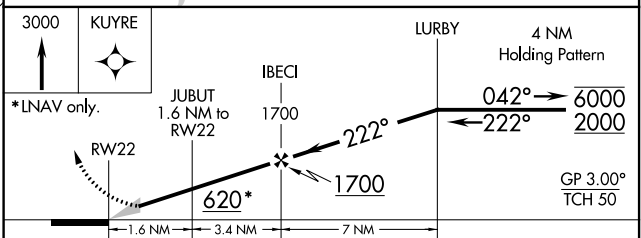
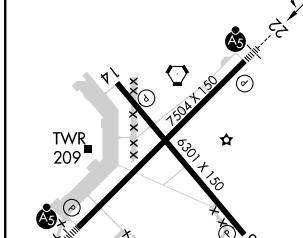
MONROE RGNL (MLU)

RNP APCH. ⚠ Circling Rwy 14 NA at night. For uncompensated Baro-VNAV systems, LNAV/VNAV NA below -6°C or above 54°C. For inop ALS, increase LNAV/VNAV all Cats visibility to 1½ SM.	MALSR ⚠	MISSED APPROACH: Climb to 3000 direct KUYRE and hold, continue climb-in-hold to 3000.
--	------------	---

ATIS <b>125.05</b>	MONROE APP CON ★ <b>118.15 290.475</b>	MONROE TOWER ★ <b>118.9 (CTAF) 257.8</b>	GND CON <b>121.9</b>	CLNC DEL <b>121.65</b>	UNICOM <b>122.95</b>
-----------------------	---	---	-------------------------	---------------------------	-------------------------



ELEV <b>79</b>	<b>D</b>	TDZE <b>78</b>
----------------	----------	----------------



CATEGORY	A	B	C	D
LPV DA		278-½	200 (200-½)	
LNAV/VNAV DA		534-1	456 (500-1)	
LNAV MDA	520-½	442 (500-½)	520-⅞	442 (500-⅞)
<b>C</b> CIRCLING	540-1 461 (500-1)	580-1 501 (600-1)	740-1¼ 661 (700-1¼)	1160-3 1081 (1100-3)

REIL Rwy 14 and 32  
MIRL Rwy 14-32  
HIRL Rwy 4-22

SC-4, 09 SEP 2021 to 07 OCT 2021

SC-4, 09 SEP 2021 to 07 OCT 2021