

WAAS CH <b>56410</b> <b>W04A</b>	APP CRS <b>042°</b>	Rwy Idg <b>7504</b> TDZE <b>78</b> Apt Elev <b>79</b>
--	------------------------	---

# RNAV (GPS) RWY 4

MONROE RGNL (MLU)

RNP APCH.

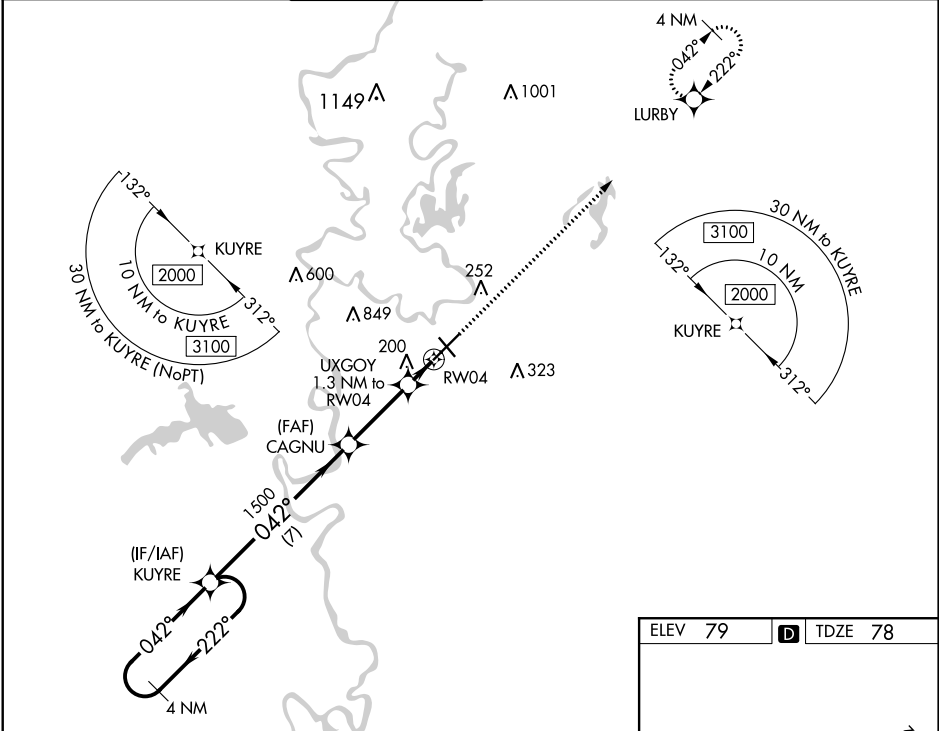
**▼** For uncompensated Baro-VNAV systems, LNAV/VNAV NA below -15°C or above 54°C. For inop ALS, increase LNAV/VNAV all Cats visibility to RVR 4500. Circling ASR Rwy 14 NA at night.  
**\*\* RVR 1800 authorized with use of FD or AP or HUD to DA.**

MALSR



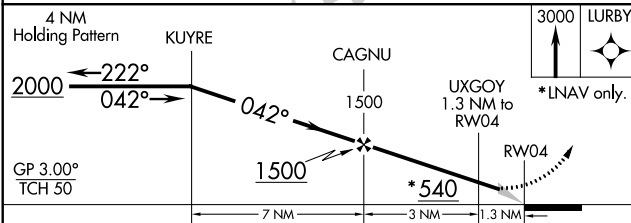
MISSED APPROACH: Climb to 3000 direct LURBY and hold.

ATIS <b>125.05</b>	MONROE APP CON ★ <b>118.15 290.475</b>	MONROE TOWER ★ <b>118.9 (CTAF) 0 257.8</b>	GND CON <b>121.9</b>	CLNC DEL <b>121.65</b>	UNICOM <b>122.95</b>
-----------------------	---	---	-------------------------	---------------------------	-------------------------

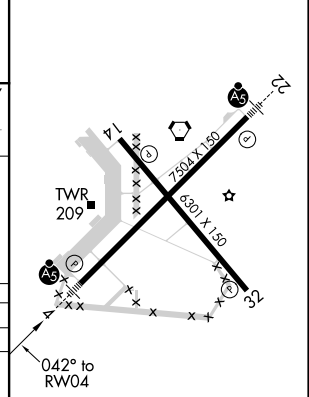


SC-4, 09 SEP 2021 to 07 OCT 2021

SC-4, 09 SEP 2021 to 07 OCT 2021



ELEV 79	D	TDZE 78
---------	---	---------



CATEGORY	A	B	C	D
LPV DA **		278/24	200 (200-½)	
LNAV/VNAV DA		383/24	305 (400-½)	
LNAV MDA	460/24	382 (400-½)	460/35	382 (400-¾)
<b>C</b> CIRCLING	580-1	501 (600-1)	740-1¾ 661 (700-1¾)	1160-3 1081 (1100-3)

REIL Rwy 14 and 32  
 MIRL Rwy 14-32 **1**  
 HIRL Rwy 4-22 **1**