

**TOP ALTITUDE:
ASSIGNED BY ATC**



- ATIS
- 125.325 270.1
- CLNC DEL
- 128.3 275.8
- GND CON
- 128.3 275.8
- SELFRIDGE TOWER ★
- 120.15 225.4
- SELFRIDGE DEP CON
- 119.6 391.9

TAKEOFF MINIMUMS:

- Rwy 1: Standard.
- Rwy 19: Standard with minimum climb of 234' per NM to 1500.

- NOTE: RNAV 1.
- NOTE: RADAR required.
- NOTE: DME/DME/IRU or GPS required.
- NOTE: Turbojet departures at/above 10000, maintain 280K until advised by ATC.

NOTE: Chart not to scale.

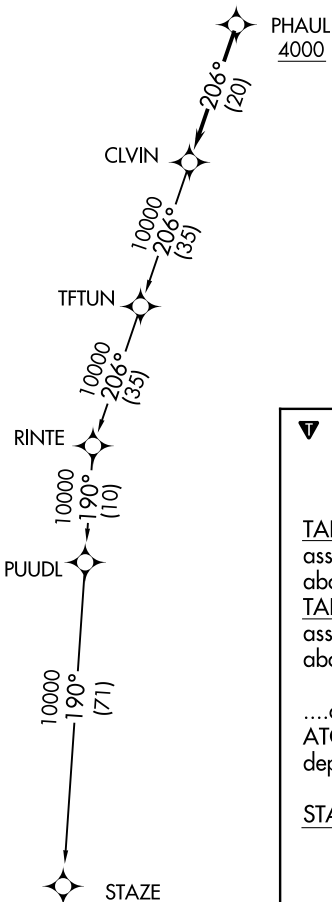
DEPARTURE ROUTE DESCRIPTION

TAKEOFF RUNWAY 1: Climb on heading 007° or as assigned for RADAR vectors to cross PHAUL at or above 4000, thence....

TAKEOFF RUNWAY 19: Climb on heading 187° or as assigned for RADAR vectors to cross PHAUL at or above 4000, thence....

...on track 206° to CLVIN, then on (transition). Maintain ATC assigned altitude, expect filed altitude 10 minutes after departure.

STAZE TRANSITION (CLVIN2.STAZE):



EC-1, 09 SEP 2021 to 07 OCT 2021

EC-1, 09 SEP 2021 to 07 OCT 2021