

MT. CLEMENS, MICHIGAN

HI-ILS or LOC/DME RWY 1

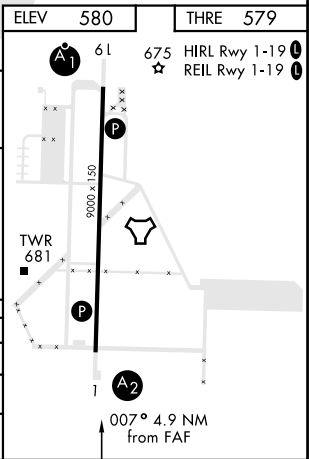
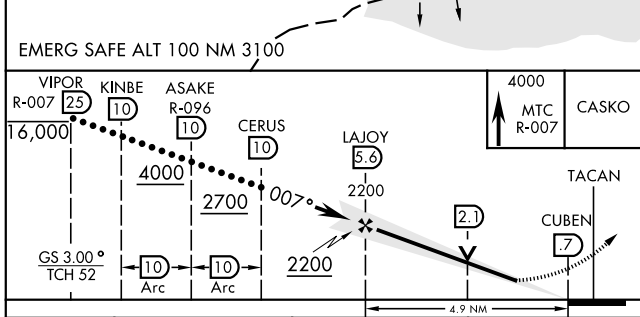
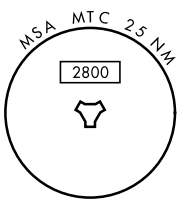
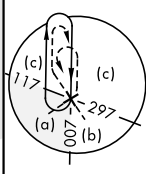
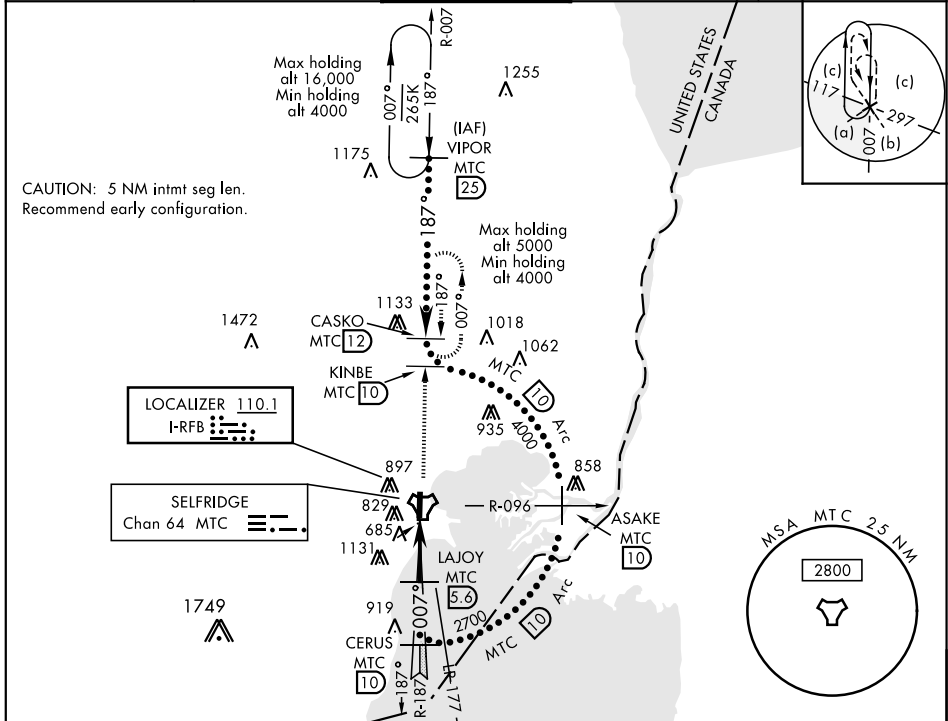
LOC I-RFB 110.1	APCH CRS 007°	Rwy ldg THRE Arprt Elev 9000 579 580	JAL-276 [USAF]	SELFRIEDGE ANGB (KMTC)
---------------------------	-------------------------	--	----------------	------------------------

▼ * When ALS inop, increase RVR to 50 and vis to 1 mile.
 ** When ALS inop, increase vis to 1 3/8 miles.
 *** Circling not authorized W of Rwy 1-19.



MISSED APPROACH: Climb to 4000 on MTC R-007 to CASKO and hold, continue climb-in-hold to 4000.

ATIS 125.325 270.1	SELFRIEDGE APP CON 119.6 318.2	SELFRIEDGE TOWER ★ 120.15 (CTAF) 0 225.4	GND CON 128.3 275.8	CLNC DEL 128.3 275.8
------------------------------	--	--	-------------------------------	--------------------------------



CATEGORY	C	D	E
S-ILS/DME 1*	907/40	328 (400-3/4)	
S-LOC/DME 1**	1060/60	481 (500-1 1/8)	
CIRCLING ***	1120-1 1/2 541 (600-1 1/2)	1140-2	561 (600-2)

MT. CLEMENS, MICHIGAN 42° 36' N-82° 50' W SELFRIEDGE ANGB (KMTC)

Amtd 2 23AUG12

HI-ILS or LOC/DME RWY 1

EC-1, 09 SEP 2021 to 07 OCT 2021

EC-1, 09 SEP 2021 to 07 OCT 2021