

MT. CLEMENS, MICHIGAN

# ILS or LOC/DME RWY 1

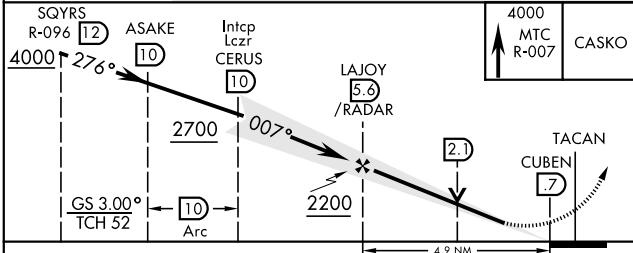
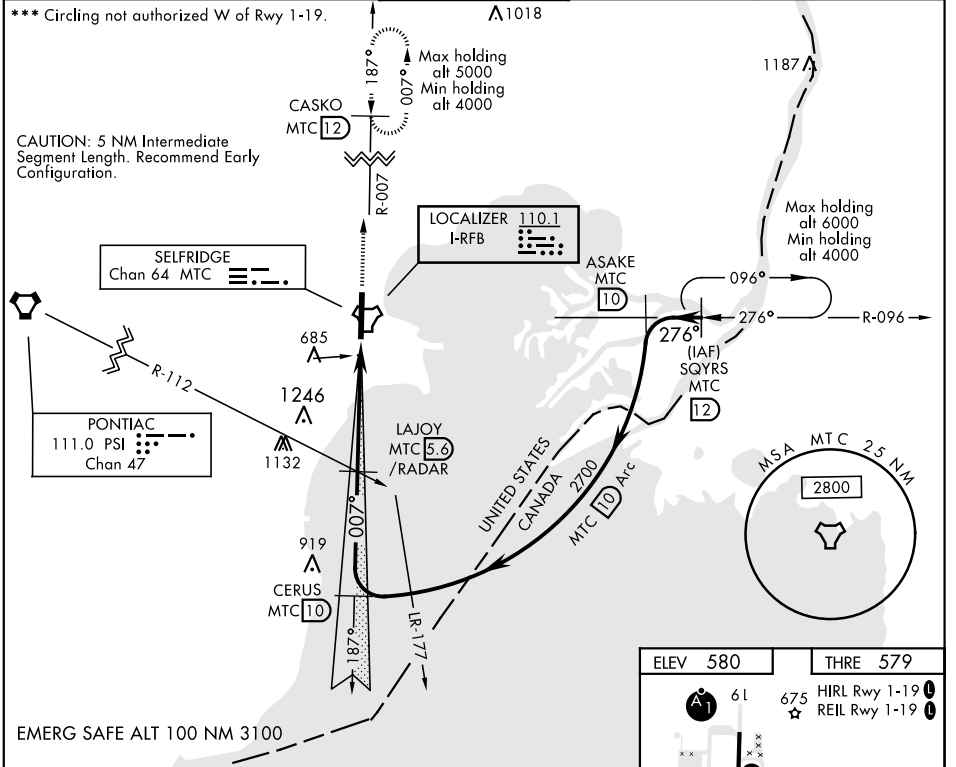
LOC I-RFB <b>110.1</b>	APCH CRS <b>007°</b>	Rwy Ldg THRE Arprt Elev <b>9000</b> <b>579</b> <b>580</b>
---------------------------	-------------------------	--

AL-276 [USAF]

SELFRIDGE ANGB (KMTC)

<p>▼ * When ALS inop, increase RVR to 50, vis to 1 mile. ** When ALS inop, increase CAT AB RVR to 55 and vis to 1 mile CAT CDE vis to 1½ miles.</p>	<p>SALS <b>A2</b></p>	<p>MISSED APPROACH: Climb to 4000 on MTC R-007 to CASKO and hold, continue climb-in-hold to 4000.</p>
---	---------------------------	---

<p>ATIS <b>125.325 270.1</b></p>	<p>SELFRIDGE APP CON <b>119.6 318.2</b></p>	<p>SELFRIDGE TOWER ★ <b>120.15 (CTAF) 0 225.4</b></p>	<p>GND CON <b>128.3 275.8</b></p>	<p>CLNC DEL <b>128.3 275.8</b></p>
--------------------------------------	---	---	---------------------------------------	--



ELEV 580	THRE 579
<p>61 675 HIRL Rwy 1-19 REIL Rwy 1-19</p>	<p>9000 x 150</p>
<p>TWR 681</p>	<p>007° 4.9 NM from FAF</p>
<p>FAF to MAP 4.9 NM</p>	
Knots	60 90 120 150 180
Min:Sec	4:54 3:16 2:27 1:58 1:38

MT. CLEMENS, MICHIGAN  
Amdt 3 23AUG12

42°36'N-82°50'W

SELFRIDGE ANGB (KMTC)

# ILS or LOC/DME RWY 1

EC-1, 09 SEP 2021 to 07 OCT 2021

EC-1, 09 SEP 2021 to 07 OCT 2021