

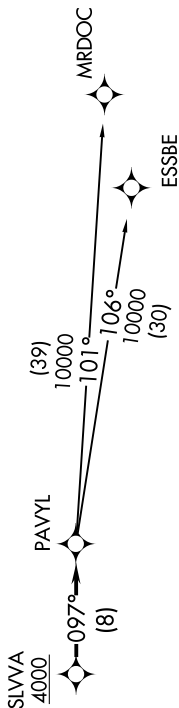
EC-1, 09 SEP 2021 to 07 OCT 2021

**TOP ALTITUDE:  
ASSIGNED BY ATC**



NOTE: RNAV 1.  
NOTE: RADAR required.  
NOTE: DME/DME/IRU or GPS required.  
NOTE: Turboplet departures at/above 10000, maintain 280K until advised by ATC.

ATIS  
125.325 270.1  
CLINC DEL  
128.3 275.8  
GND CON  
128.3 275.8  
SELFRIDGE TOWER \*  
120.15 225.4  
SELFRIDGE DEP CON  
119.6 391.9



TAKEOFF MINIMUMS:

Rwy 1: Standard.  
Rwy 19: Standard with minimum climb  
of 234' per NM to 1500.

NOTE: Chart not to scale.

**DEPARTURE ROUTE DESCRIPTION**

TAKEOFF RUNWAY 1: Climb on heading 007° or as assigned for RADAR vectors to cross SLWA at or above 4000, thence....  
TAKEOFF RUNWAY 19: Climb on heading 187° or as assigned for RADAR vectors to cross SLWA at or above 4000, thence....

.....on track 097° to PAVYL, then on (transition). Maintain ATC assigned altitude, expect filed altitude 10 minutes after departure.

ESSBE TRANSITION (PAVYL2.ESSBE):  
MRDOC TRANSITION (PAVYL2.MRDOC):



EC-1, 09 SEP 2021 to 07 OCT 2021