

MT. CLEMENS, MICHIGAN

# RNAV (GPS) RWY 01

APCH CRS	Rwy Idg	9000
007°	TDZE	580
	Arprt Elev	580

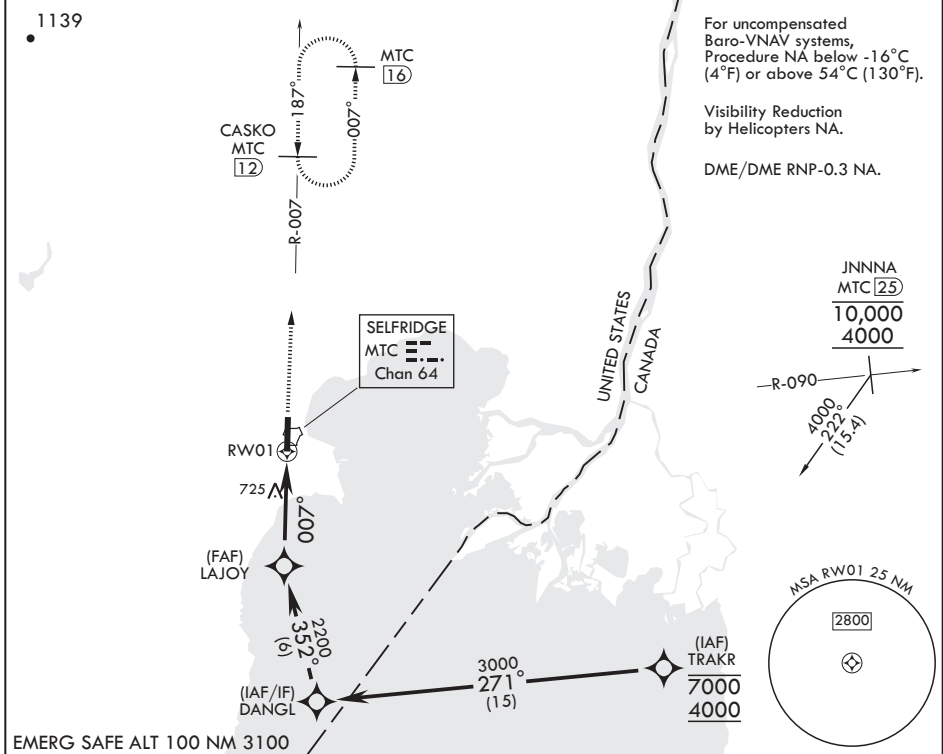
AL-276 (USAF)

SELFRIDGE ANGB (KMTC)

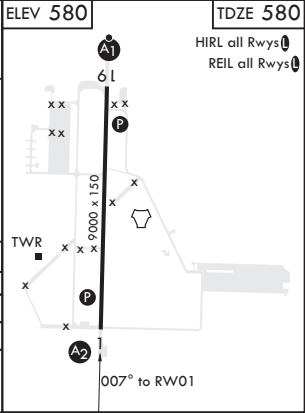
**V** \* When ALS inop increase RVR to 60, vis to 1 1/8 miles.  
 \*\* When ALS inop increase CAT AB RVR to 55, vis to 1 mile;  
 CAT CDE RVR to 60, vis to 1 1/8 miles.  
 \*\*\* Circling not authorized W of Rwy 1-19.

**SALS** MISSED APPROACH: Climb to 1200 then climbing right turn to 4000 direct CASKO (MTC TACAN R-007/12 DME) and hold, continue climb-in-hold to 4000.

ATIS 125.325 270.1	APP CON/DEP CON 119.6 318.2	TOWER * 120.15 225.4	GND CON 128.3 275.8	CLNC DEL 128.3 275.8
-----------------------	--------------------------------	-------------------------	------------------------	-------------------------



CATEGORY	A	B	C	D	E
RNAV/VNAV DA*	1000/50		420	(500-1)	
RNAV MDA**	1000/40	420 (500-¾)	1000/50	420	(500-1)
<b>C</b> CIRCLING***	1040-1	460 (500-1)	1040-1½ 460 (500-1½)	1140-2	560 (600-2)



MT. CLEMENS, MICHIGAN

42°37'N - 82°50'W

SELFRIDGE ANGB (KMTC)

Orig 20MAY21  
TERPS

# RNAV (GPS) RWY 01

EC-1, 09 SEP 2021 to 07 OCT 2021

EC-1, 09 SEP 2021 to 07 OCT 2021