

MT. CLEMENS, MICHIGAN

RNAV (GPS) RWY 19

APCH CRS	Rwy ldg	9000
187°	THRE	579
	Arpt Elev	580

AL-276 [USAF]

SELFRIDGE ANGB (KMTCC)

DME/DME RNP-0.3 NA.

ALSF-1

MISSED APPROACH: Climb to 1200 then climbing left turn to 4000 direct SQYRS (MTC TACAN R-096/T2DME), do not exceed 250 KIAS until turn completion and hold, continue climb-in-hold to 4000.

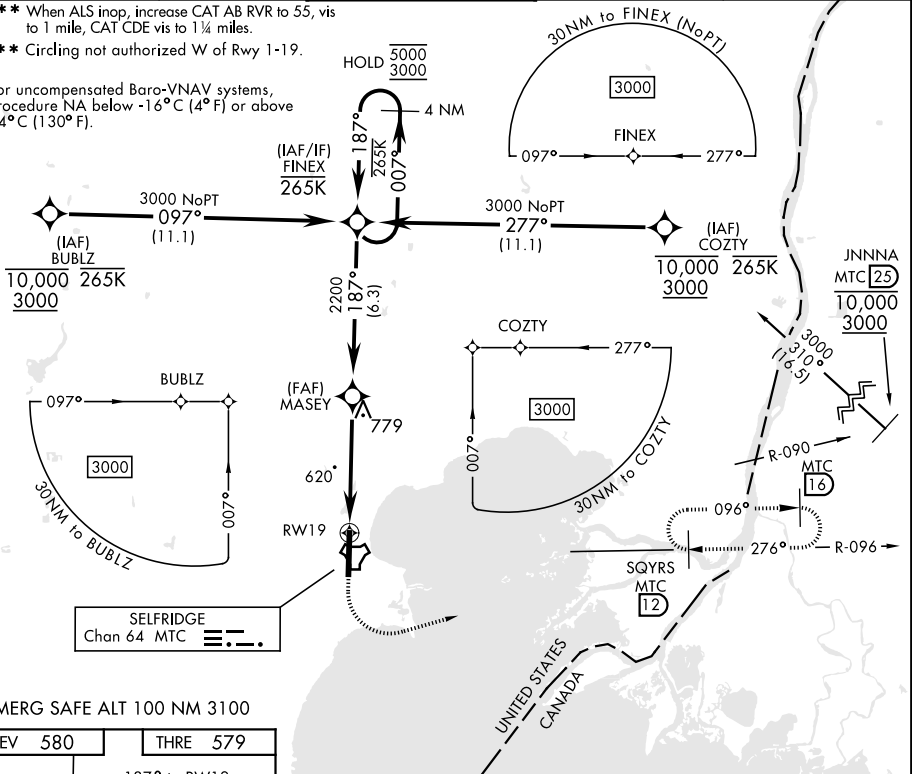
▲ * When ALS inop, increase vis to 1 1/4 miles.



ATIS	APP CON	TOWER ★	GND CON	CLNC DEL
125.325 270.1	119.6 318.2	120.15 (CTAF) 0 225.4	128.3 275.8	128.3 275.8

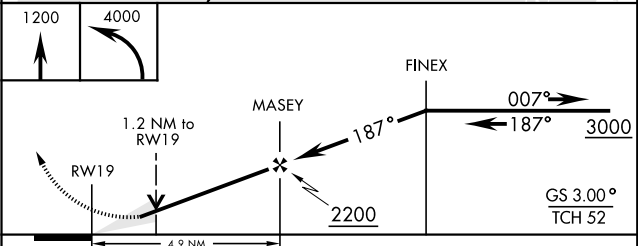
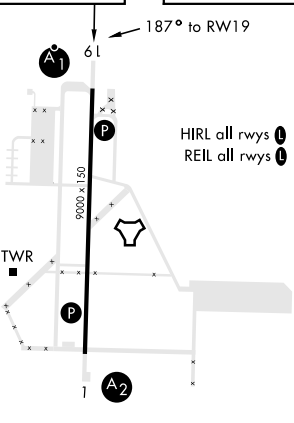
** When ALS inop, increase CAT AB RVR to 55, vis to 1 mile, CAT CDE vis to 1 1/4 miles.
 *** Circling not authorized W of Rwy 1-19.

For uncompensated Baro-VNAV systems, Procedure NA below -16°C (4°F) or above 54°C (130°F).



EMERG SAFE ALT 100 NM 3100

ELEV 580	THRE 579
----------	----------



CATEGORY	A	B	C	D	E
LNAV/VNAV DA*	1000/40		421	(500-3/4)	
LNAV MDA**	1000/24 421 (500-1/2)		1000/40 421 (500-3/4)		
CIRCLING ***	1040-1	460 (500-1)	1040-1 1/2 460 (500-1 1/2)		1140-2 560 (600-2)

MT. CLEMENS, MICHIGAN

42° 37' N-82° 50' W

SELFRIDGE ANGB (KMTCC)

Orig 12AUG21

RNAV (GPS) RWY 19

EC-1, 09 SEP 2021 to 07 OCT 2021

EC-1, 09 SEP 2021 to 07 OCT 2021